

£449,000

Blumer Lock, Yalding, Maidstone ME18 6AD



House



3 Bedrooms



null  
Receptions



null Bathrooms

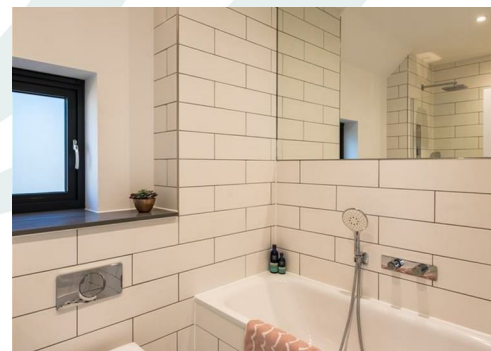
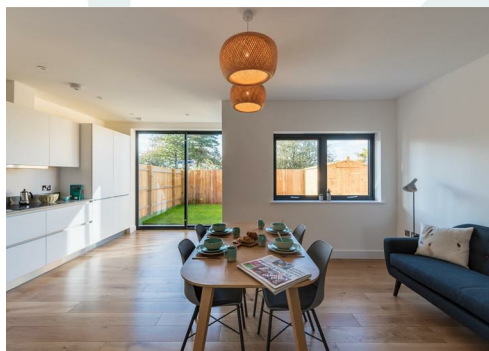
**\*\*\*LAST ONE REMAINING -TO VIEW THIS STUNNING HOUSE CONTACT PAGE AND WELLS NEW HOMES 01622 625129\*\*\***

Blumer Lock is a beautiful new development in Yalding adjacent to Hampstead Marina in the village of Yalding. Eight stunning 3 Bedroom Semi-Detached houses remain in this Exclusive gated development with delightful landscaped common land including a small park/play area for communal use.

The properties themselves have contemporary design with a mixed use of materials from bricks to wood cladding. Enjoy the large entrance hall, open plan kitchen.diner, lounge, downstairs cloakroom, three double bedroom with en-suite to master bedroom and family bathroom. There is a rear enclosed garden and to the front two allocated parking spaces.

**\*HELP TO BUY OPTION AVAILABLE\***

To view these properties contact Page and Wells New Homes 01622 625129



## Blumer Lock, Yalding, Maidstone ME18 6AD

MAIDSTONE 01622 625129



### About this Property.....

#### Property Features

- NEW 3 BEDROOM SEMI-DETACHED HOUSES
- HELP TO BUY AVAILABLE
- GATED ENTRANCE
- CONTEMPORARY DESIGN
- PRIVATE GARDEN & OUTSIDE TERRACE
- 2 ALLOCATED PARKING SPACES
- EXCELLENT LINKS VIA PADDOCK WOOD

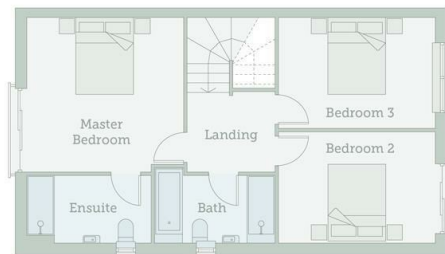
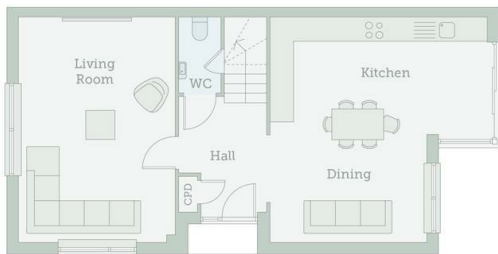
#### General Property Information

#### Interested?...

If you would like to view or have already viewed and want to make an offer call the team at the Page & Wells Maidstone office on 01622 625129

## Blumer Lock, Yalding, Maidstone ME18 6AD

### Accommodation



### Directions and Local Information



## Blumer Lock, Yalding, Maidstone ME18 6AD

MAIDSTONE 01622 625129



Viewing by arrangement  
with the Agents:

Maidstone Office  
52-54 King Street  
Maidstone  
Kent  
ME14 1DB

Tel: 01622 625129  
Email: [sales@page-wells.co.uk](mailto:sales@page-wells.co.uk)

[www.pageandwells.com](http://www.pageandwells.com)

Offices at:

Maidstone: 01622 756703  
Bearstead: 01622 739574  
Coxheath: 01622 747418  
Larkfield: 01732 841164  
Loose: 01622 746273  
(\*representative office)  
London\*: 0207 0791581

New Homes: 01622 625129  
Commercial 01622 677646

Page & Wells limited for themselves and for the vendors of this property whose agents they are give notice that: 1. These particulars do not constitute any part of, an offer or a contract. 2. All statements contained in these particulars as to this property are made without responsibility on the part of Page & Wells Limited or the Vendor. 3. None of the statements contained in these particulars as to the property is to be relied on as statements or representations of fact. 4. Any intending purchaser must satisfy himself by inspection or otherwise as to the correctness of each of the statements contained in these particulars. 5. The vendor does not make or give, and neither Page & Wells Limited nor any person in their employment has any authority to make or give any representation whatsoever in relation to this property. These particulars are supplied on the understanding that all negotiations are carried out throughout Page & Wells Limited. Properties with a reference prefixes EAA are those which Page & Wells Limited disclose an interest in accordance with the provisions of the Estates Agents Act 1979

*"Selling throughout  
Mid Kent  
for over 85 years!!"*

### Energy Efficiency Rating

	Current	Potential
Very energy efficient - lower running costs		
(92 plus) <b>A</b>		
(81-91) <b>B</b>		
(69-80) <b>C</b>		
(55-68) <b>D</b>		
(39-54) <b>E</b>		
(21-38) <b>F</b>		
(1-20) <b>G</b>		
Not energy efficient - higher running costs		
England & Wales		
EU Directive 2002/91/EC		

### Environmental Impact (CO<sub>2</sub>) Rating

	Current	Potential
Very environmentally friendly - lower CO <sub>2</sub> emissions		
(92 plus) <b>A</b>		
(81-91) <b>B</b>		
(69-80) <b>C</b>		
(55-68) <b>D</b>		
(39-54) <b>E</b>		
(21-38) <b>F</b>		
(1-20) <b>G</b>		
Not environmentally friendly - higher CO <sub>2</sub> emissions		
England & Wales		
EU Directive 2002/91/EC		

