



1 Palace Place, London
SW1E

GARTONJONES.COM



1 Palace Place, London
, SW1E

GARTON JONES.COM

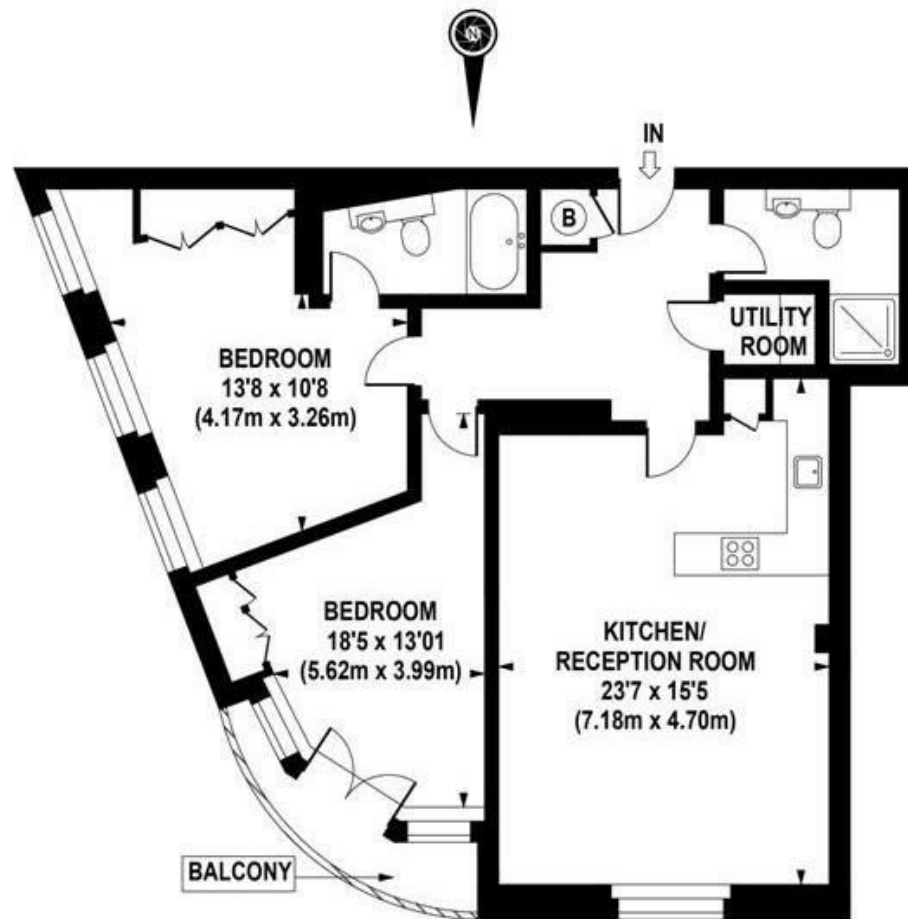
49 Marsham Street Lettings:
London +44 (0) 20 7340 0480
SW1P 3DP westminster@gartonjones.com
www.gartonjones.com

£675 Per Week

A well presented, bright and spacious furnished apartment located in this small development neighbouring Buckingham Palace. The living space is well apportioned at 972 Square Feet (90.3 Sq.M) and offers natural limestone floors in the kitchen, hallway and wet areas, solid oak flooring to the living and carpeted bedrooms. The accommodation comprises of an open plan modern integrated kitchen and reception, two double bedrooms both with fitted wardrobes and the master offering an en-suite and a further modern guest bathroom. Palace Place is exceptionally well located and just a stone's throw from Victoria Station. You are surrounded by an array of iconic London attractions with 2 royal parks and Her Majesty The Queens' Palace at the end of the road. A plethora of hotels, eateries and retails shops which include The Goring, St Ermins', St James Conrad, The Ivy Victoria, Timmy Green , Aster and Flight Club to name just a few. Garton Jones are pleased to confirm that they manage this property and are just a short walk from the development.

- 972 sq.ft (90.3sq.m)
- 2nd Floor (With Lift)
- 2 Bedroom Apartment
- Open Plan Reception Room
- Modern Integrated Kitchen with Breakfast Bar
- 2 Bathrooms (1 En-Suite)
- 24 Hour Concierge
- Furnished
- Close to Local Amenities Including Shops, Restaurants & Transport Links
- Walking Distance to St James' Park and Victoria Station





SECOND FLOOR

APPROX. GROSS INTERNAL AREA 972 sq.ft / 90.33 sq.m

