



BUTLER & STAG

Whitton Walk | London

| E3

Three bedroom split level maisonette, well located for the various transport links from Mile End and Bow Road.

• Three Bedroom Maisonette • Available Immediately • Furnished • Split Level Apartment • Small Private Balcony • Excellent Transport Links • Recent Refurbishments

£1,600 |

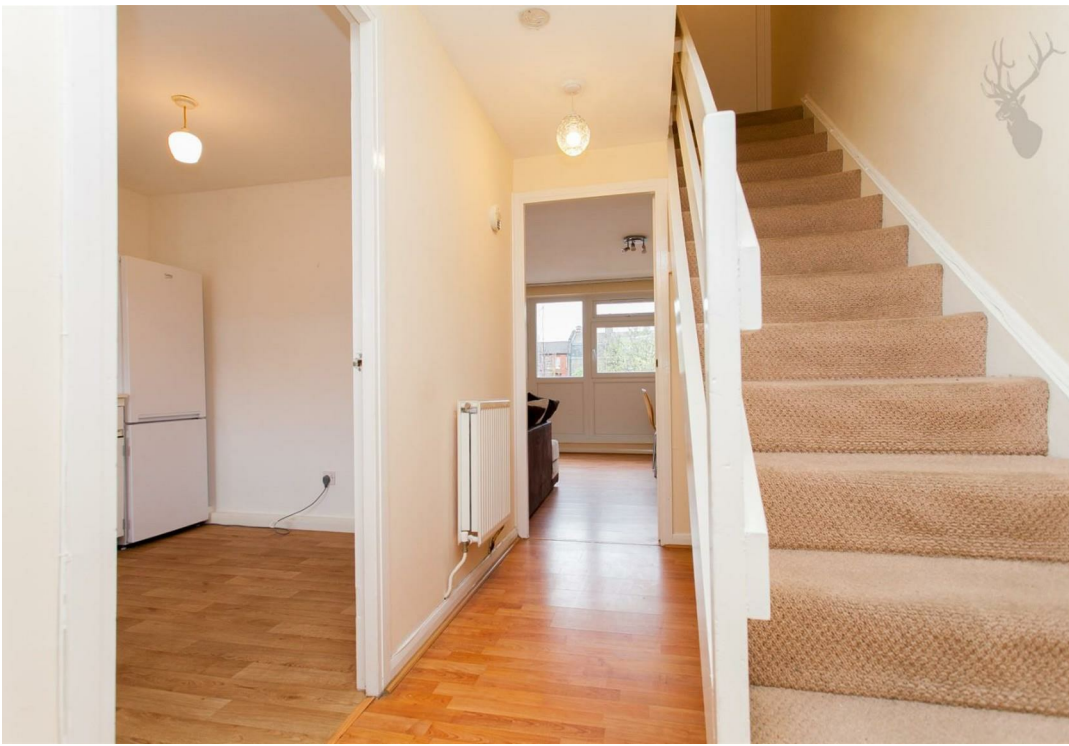
Large three bedroom apartment in a fantastic location with outside space and a separate kitchen.

Split level apartment arranged over the second and third floor of this low-rise brick built development. On the second floor there is a good size living room and a separate eat-in kitchen. On the upper level there are three bedrooms and a family bathroom.

Well located for Bow Church DLR, Mile End and Bow Road underground

The property is furnished and is available immediately.







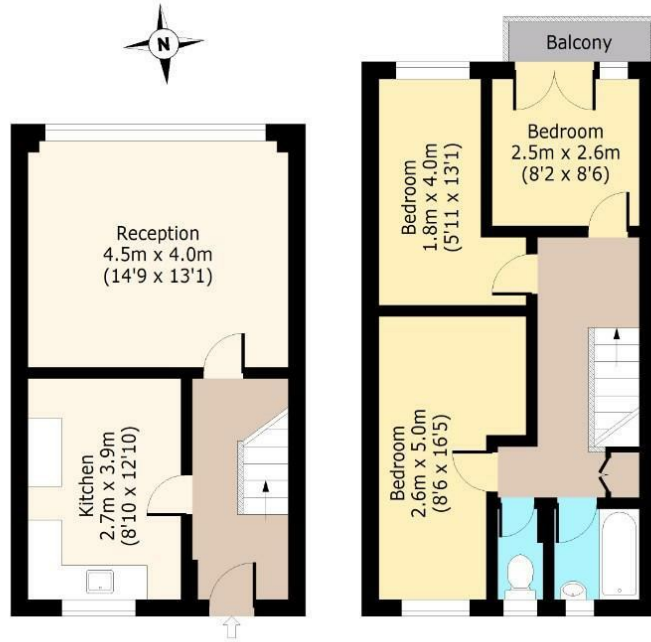
Whitton Walk, E3

First Floor

Approx. 37.25 Sq. meters (401 Sq. feet)

Second Floor

Approx. 42.36 Sq. meters (456 Sq. feet)



Total area: approx. 79.61 Sq. meters (857 Sq. feet)
For illustration purposes only - not to scale
www.lpaplus.com



BUTLER & STAG

508 Roman Road, Bow, London, E3 5LU | 020 8102 1236 |

bow@butlerandstag.com | www.butlerandstag.uk

Important Notice - These particulars have been prepared in good faith and they are not intended to constitute part of an offer or contract. We have not performed a structural survey on this property and the services, appliances and specific fittings have not been tested. All photographs, measurements, floor plans and distances referred to are given as a guide and should not be relied upon.

Energy Efficiency Rating		Current	Potential
Very energy efficient - lower running costs			
(92 plus)	A		
(81-91)	B		
(69-80)	C		
(55-68)	D		
(39-54)	E		
(21-38)	F		
(1-20)	G		
Not energy efficient - higher running costs			
England & Wales		EU Directive 2002/91/EC	

Environmental Impact (CO ₂) Rating		Current	Potential
Very environmentally friendly - lower CO ₂ emissions			
(92 plus)	A		
(81-91)	B		
(69-80)	C		
(55-68)	D		
(39-54)	E		
(21-38)	F		
(1-20)	G		
Not environmentally friendly - higher CO ₂ emissions			
England & Wales		EU Directive 2002/91/EC	