



Bramah House, 9 Gatliff Road
London SW1W

GARTONJONES.COM



Bramah House, 9 Gatliff Road London, SW1W

GARTON JONES.COM

8 Gatliff Road
Chelsea
London
SW1W 8DP

Lettings:
+44 (0) 20 7730 5007
gws@gartonjones.com
www.gartonjones.com

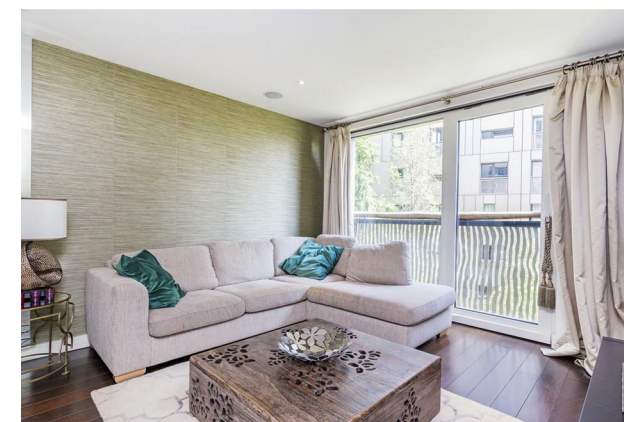
£650 Per Week

A TWO DOUBLE BEDROOM apartment to RENT of approx. 813sq.ft (75.5sq.m) in Bramah House on the popular Grosvenor Waterside development, located close to the banks of the River Thames by Chelsea Bridge. This FURNISHED apartment has an open plan reception room, a smart kitchen with a breakfast bar and Gaggenau integrated appliances including a wine cooler. There is dark wood flooring, 2 bathrooms (1 en-suite), comfort cooling, integrated ceiling mounted surround sound speakers, and good storage including built in wardrobes to the master bedroom and a utility cupboard housing a washing machine. 24 HOUR CONCIERGE, GYM and SPA. On-site Sainsbury's Local, coffee shop and private kids club. SLOANE SQUARE and VICTORIA station with Gatwick Express are within walking distance.

Available via Garton Jones' on-site office at Grosvenor Waterside (underneath Bramah House).

Please note furniture may differ to that shown in the current photos.

- 813sq.ft (75.5sq.m)
- 2 Double Bedrooms
- Open Plan Reception Room
- Integrated Kitchen
- 2 Bathrooms (1 En-Suite)
- 24 Hour Concierge
- Comfort Cooling
- Residents' Leisure Suite with Gym & Spa
- On-Site Sainsbury's and Coffee Shop
- Within Walking Distance of Sloane Square and Victoria Stations



Bramah House

Approximate Gross Internal Area = 813 sq ft / 75.5 sq m



Not to scale, for guidance only and must not be relied upon as a statement of fact.
All measurements and areas are approximate only and have been prepared in
accordance with the current edition of the RICS Code of Measuring Practice.

