



**HOBARTS**

estate agents • surveyors • valuers

FLAT C, 3 HILLFIELD AVENUE, CROUCH END,  
LONDON, N8 7DU  
ASKING PRICE OF £369,950





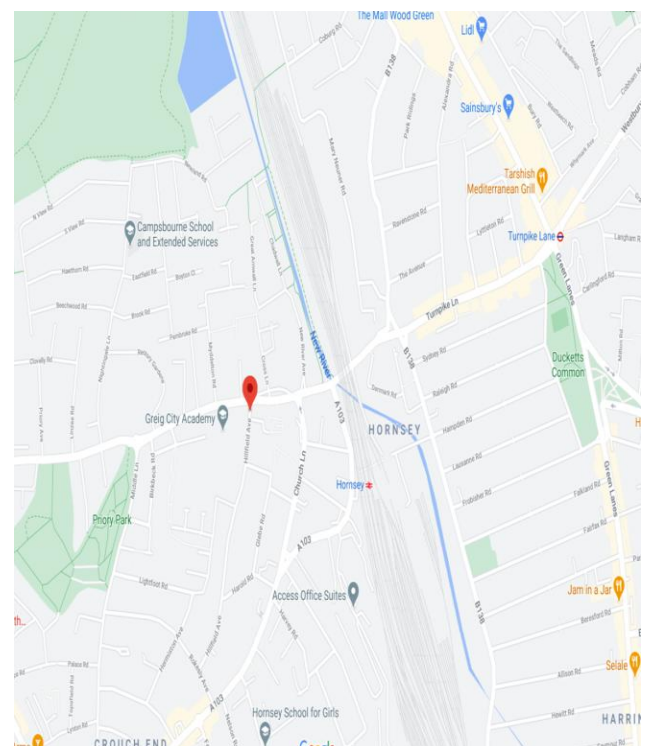


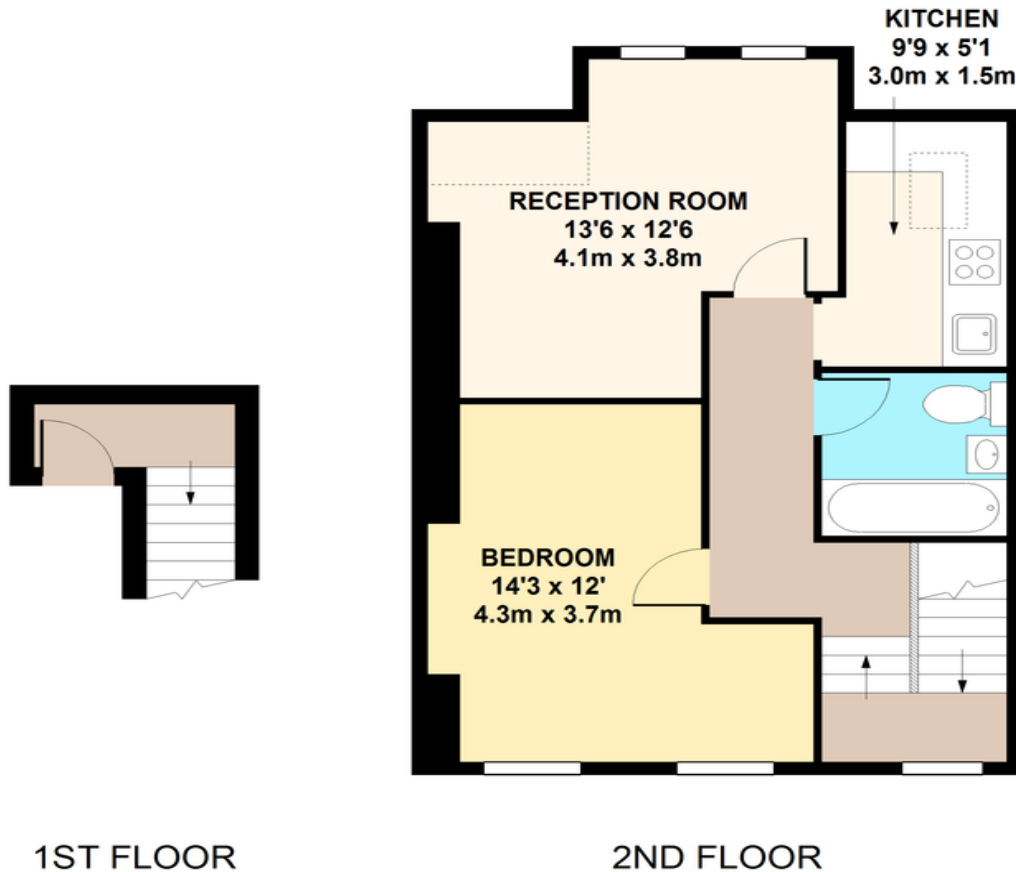
## Property Summary

Located on a sought after road is this beautifully presented top floor one double bedroom apartment, in a period property. Apartment benefits from a double bedroom with views to St Mary's Tower, reception room, fully fitted kitchen and modern bathroom. Additional features include split level entrance hallway, double glazed sash windows and being top floor there is plenty of light. Share of freehold.

The flat is very close to Hornsey High Street and within easy reach of the popular Crouch End Broadway both with an excellent selection of shops, restaurants and cafes. Transport links are a short walk away to Hornsey Station with links to the city and 10 minutes to Turnpike Lane underground (Piccadilly line)

- One double bedroom
- Top floor flat
- Fully fitted kitchen
- Bathroom with shower
- Bedroom with views to St Mary's tower
- Great location for Hornsey and Crouch End shops and amenities
- Transport links at Hornsey BR and Turnpike Lane (Piccadilly line)
- Priory Park close by
- Share of freehold





**HILLFIELD AVENUE**  
**TOTAL APPROX. FLOOR AREA 507 SQ.FT. (47.1 SQ.M.)**

Whilst every attempt has been made to ensure the accuracy of the floor plan contained here, measurements of doors, windows, rooms and any other items are approximate and no responsibility is taken for any error, omission, or mis-statement. This plan is for illustrative purposes only and should be used as such by any prospective purchaser. The services, systems and appliances shown have not been tested and no guarantee as to their operability or efficiency can be given

