



we are
morfittsmith

Lennox Road
Hillsborough
Sheffield
S6 4FL



An impeccable example of a Hillsborough mid-terrace: Lennox Road.

This beautiful home has been lovingly maintained, boasting three stylish bedrooms and an immaculate four-piece suite.





Time to explore.

Right in the heart of Hillsborough, Lennox Road has everything you could want at your fingertips in this extremely sought-after area. There are an excellent range of local shops, schools, services and amenities as well as superb transport links taking you right into the city centre and out towards the stunning Peaks. It is only a few minutes' walk from the prestigious Hillsborough park, with its charming library and beautiful Georgian walled garden, meaning that wide green spaces and outdoor facilities are never far from your door. To the rear of this lovely home is a stone-flagged patio and smart wooden decking for seating or a barbecue. With on-road parking available, this fantastic 3-bed is an ideal choice for your new home.

Step inside your new home.

The ground floor of Lennox Road is where you will find the living room and kitchen/diner. The living room is a space with a wonderful neutral aesthetic, featuring attractive wooden flooring, a striking black fireplace, and a bright bay window. The kitchen/diner is no less visually appealing, with artistic light fittings, a rustic wooden fireplace and kitchen units, and a warm, welcoming atmosphere. The kitchen includes modern fittings and there is plenty of room for a generous dining table. Upstairs you will find two bedrooms and an impressive four-piece suite. Bedroom 1 is vast in scale with room for lots of storage and a large bed. Bedroom two is cosier in size and would make a perfect children's room or home office. The four-piece suite is pristine throughout with smart tiling and plenty of space. Bedroom 3 is on the second floor, a vast room with a broad window granting you lots of light and plenty of room for storage under the eaves.



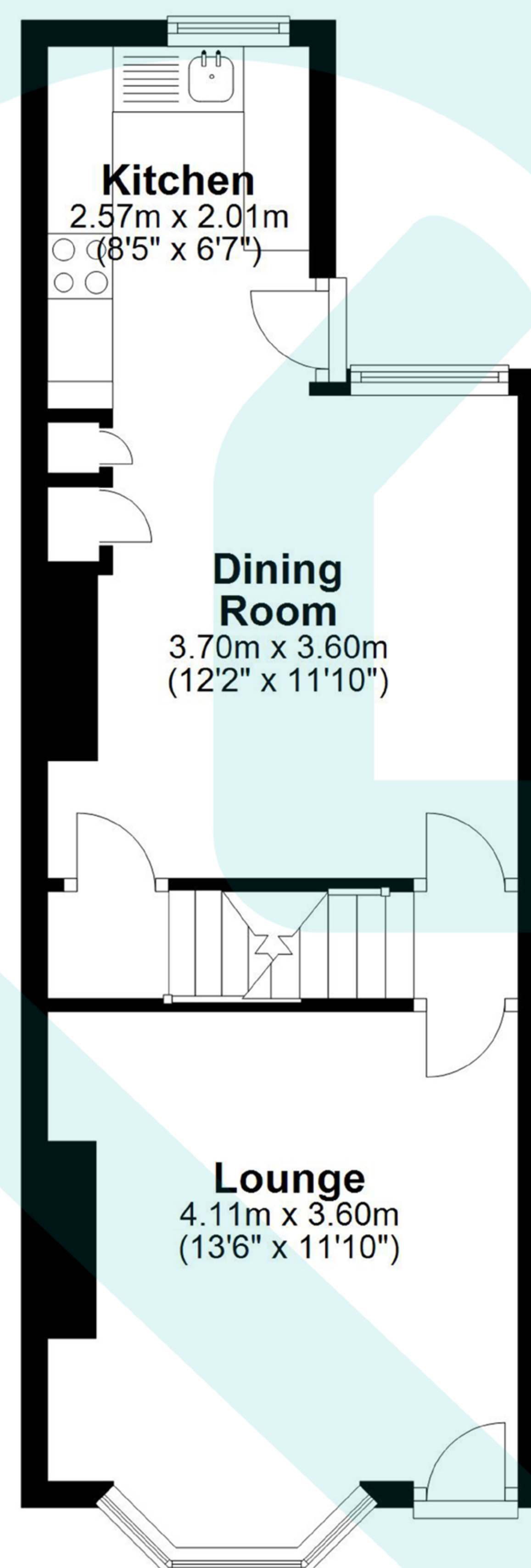




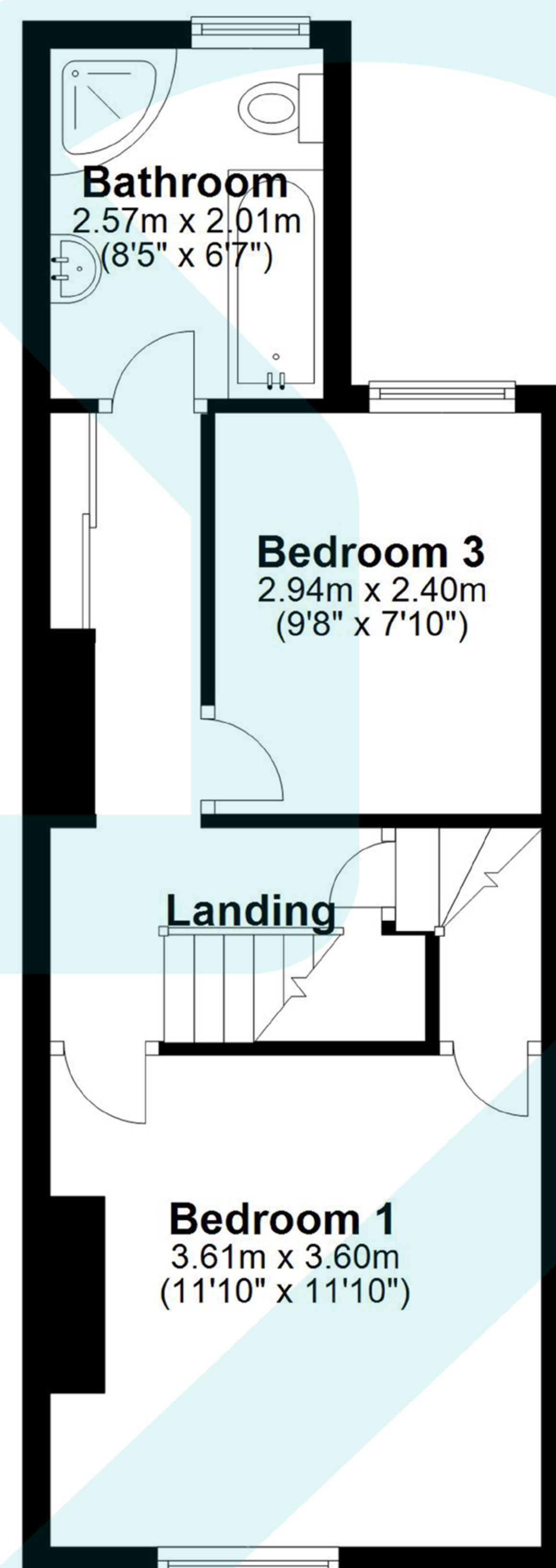




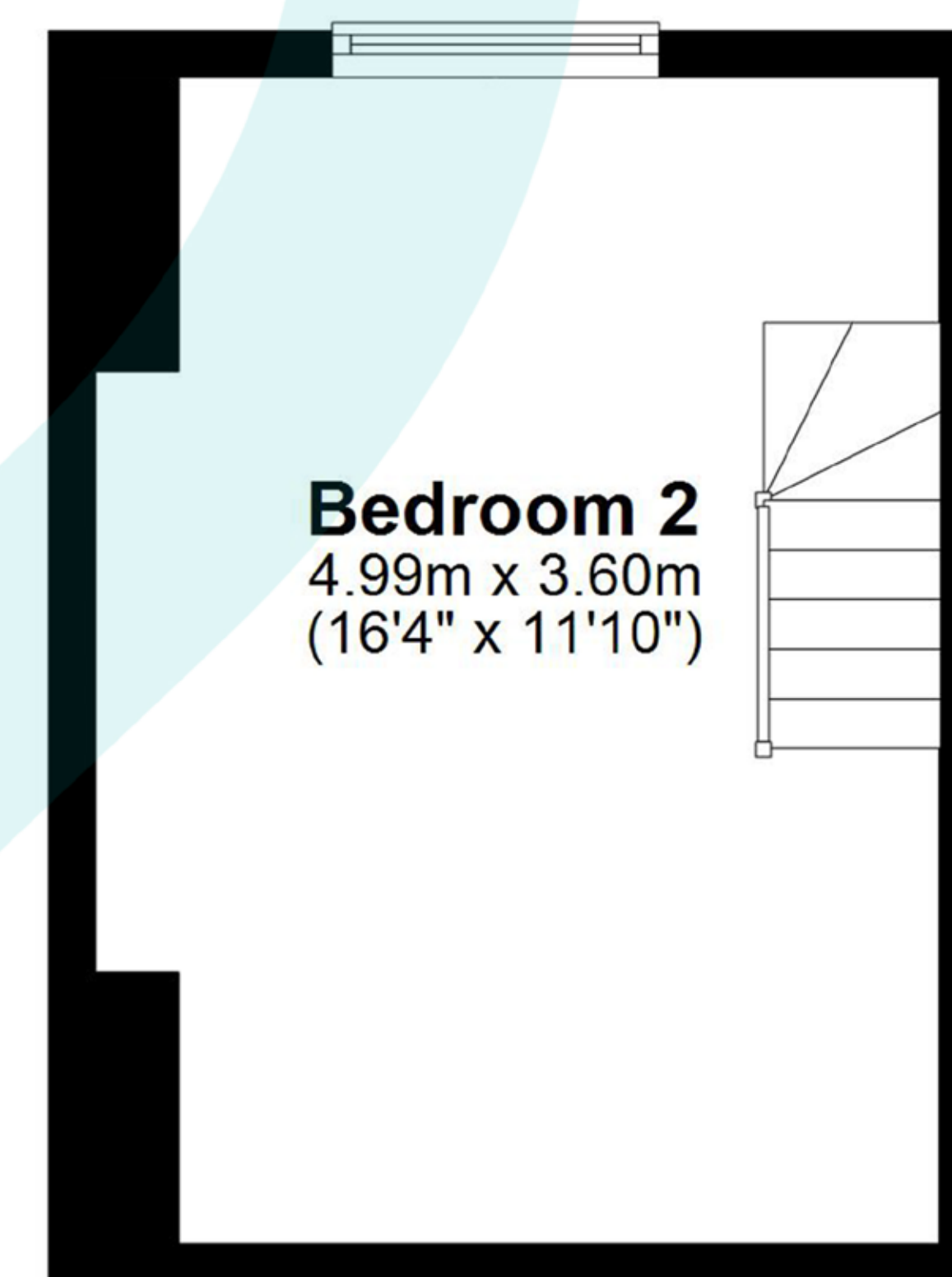
Approx. 35.6 sq. metres (382.8 sq. feet)



Approx. 35.3 sq. metres (380.3 sq. feet)

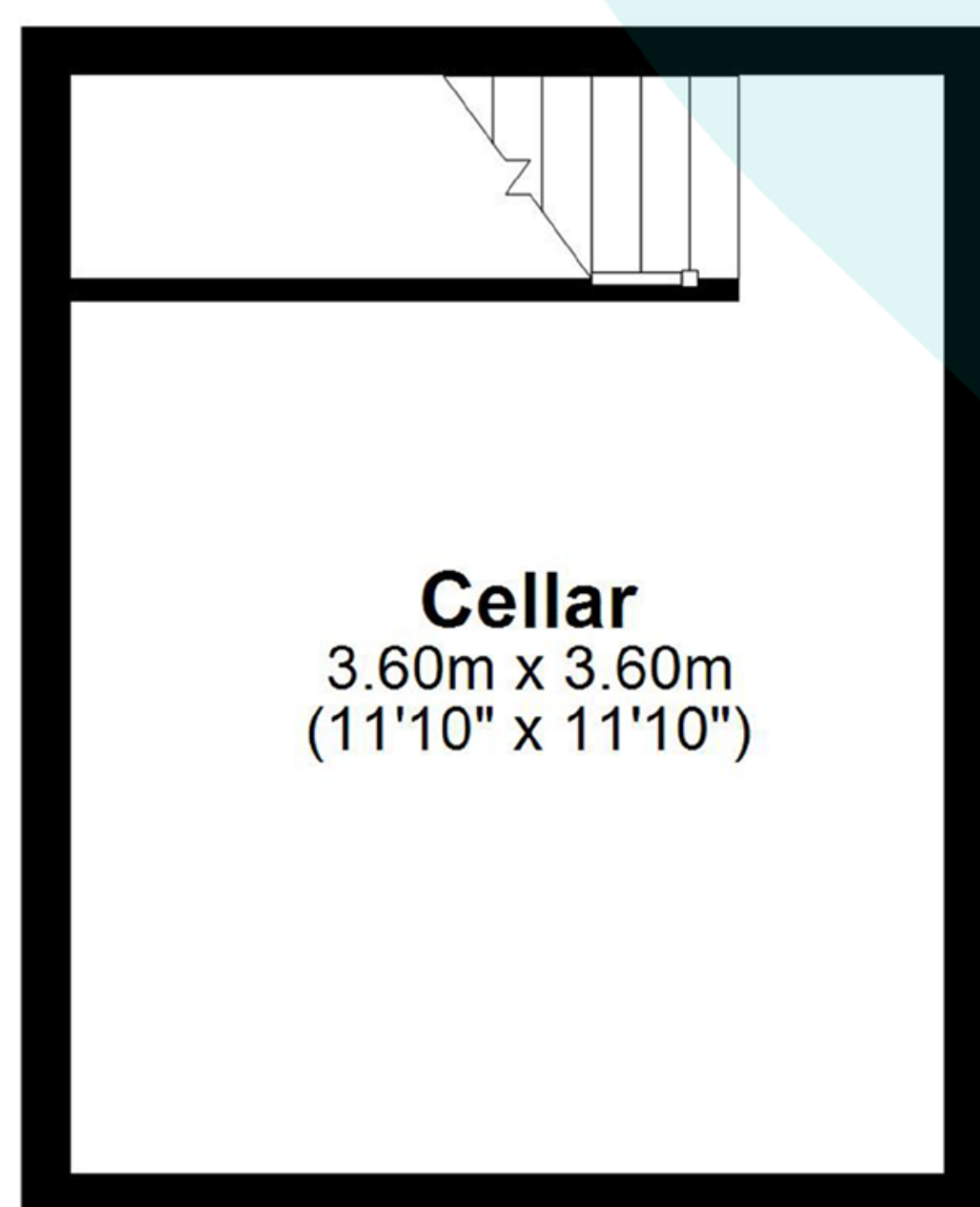


Approx. 18.0 sq. metres (193.4 sq. feet)



Total area: approx. 105.2 sq. metres (1132.1 sq. feet)

Approx. 16.3 sq. metres (175.7 sq. feet)



Whilst every attempt has been made to ensure the accuracy of the floor plan contained here, measurements of doors, windows, rooms and any other items are approximate and no responsibility is taken for any error, omission or mis-statement. This plan is for illustrative purposes only and should be used as such by any prospective tenant/ purchaser.

Made with Metropix,  **morfittsmith**
Estate & Letting Agent

Score	Energy rating	Current	Potential
92+	A	<div>65 D</div>	<div>89 B</div>
81-91	B		
69-80	C		
55-68	D		
39-54	E		
21-38	F		
	G		

IMPORTANT: we would like to inform prospective purchasers that these sales particulars have been prepared as a general guide only, A detailed survey has not been carried out, nor the services, appliances and fittings tested. Room sizes should not be relied upon for furnishing purposes and are approximate. If floor plans are included, they are for guidance only and illustration purposes only and may not be to scale. If there are any important matters likely to affect your decision to buy, please contact us before viewing the property.



The MorfittSmith Building,
67 Middlewood Road,
Sheffield, S6 4GX



0114 232 1764



www.morfittsmith.co.uk



sales@morfittsmith.co.uk



lettings@morfittsmith.co.uk



newhomes@morfittsmith.co.uk



[@morfittsmith](https://www.facebook.com/morfittsmith)



[@morfittsmith](https://www.instagram.com/morfittsmith)



MorfittSmith Estate & Letting Agent



morfittsmith



sales | lettings | new homes