



Staveley Road, London, W4 3HU

£1,350,000

WHITMAN & CO.

SALES · LETTINGS · COMMERCIAL

- Four bedroom house
- 30' garden
- 21' x 20' bespoke kitchen/breakfast/living room
- Off street parking
- 16' front reception room
- Located in Grove Park

Tenure - Freehold
Local Authority - Hounslow
Council Tax - Band F

THE PROPERTY

An exceptionally light and spacious four bedroom semi detached house with off street parking ideally located on this sought after residential road offering close proximity to all amenities.

Accommodation comprises: master suite, three further bedrooms, luxury bathroom, large entrance hall, 16' front reception room, cloakroom, 21' x 20' bespoke kitchen/breakfast/living room, private landscaped garden with far reaching views, covered side access, off street parking, polished hard wood floors. Situated in this cherry tree lined residential road just along from Chiswick House grounds. Close proximity to Chiswick main line station, local bus routes and shopping facilities along Fauconberg Parade.

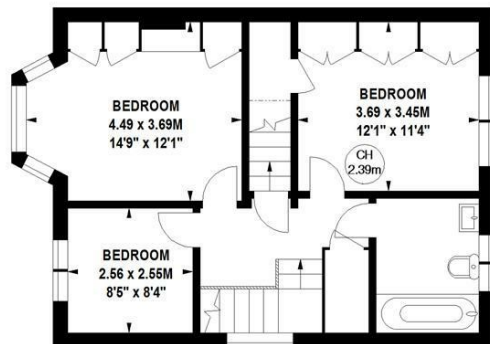
SITUATION



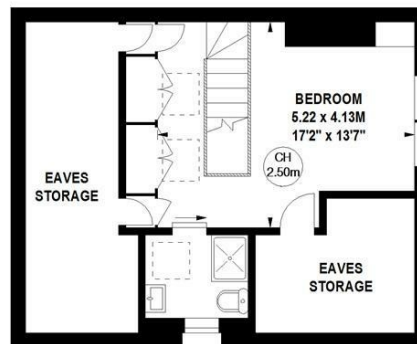
Staveley Road, W4

Approximate gross internal area
172.89 sq m / 1861 sq ft
(Including Eaves Storage)
Approximate gross eaves storage area
20.72 sq m / 223 sq ft

Key :
CH - Ceiling Height



First Floor



Second Floor



Ground Floor

Not to scale, for guidance only and must not be relied upon as a statement of fact.
All measurements and areas are approximate only