



Duke Road, W4 2BA

A nicely presented and spacious three bedroomed Victorian home situated in the very popular "Glebe Estate" area in the heart of Chiswick just moments from Chiswick High Road with its array of boutique shops and restaurants, Local retailers include M&S, Waitrose, Sainsbury & Tesco. The accommodation provides: part open plan living area provides front reception & central open reception rooms, fitted kitchen, ground floor cloakroom, private rear garden, three double bedrooms large family bathroom with freestanding bath & separate shower room utility room, gas fired central heating. Local transport links include both Turnham Green & Chiswick Park tube stations, numerous local bus routes with convenient vehicular access via A4/M4 Central London, Heathrow & The West the house is offered unfurnished and available immediately

- Very popular "Glebe estate" residential area
- Nicely presented Victorian family home
- Great for transport links
- Open plan front and central receptions
- Fitted kitchen
- Three double bedrooms
- Family bathroom with separate shower
- Utility room
- Private rear garden
- Available immediately unfurnished

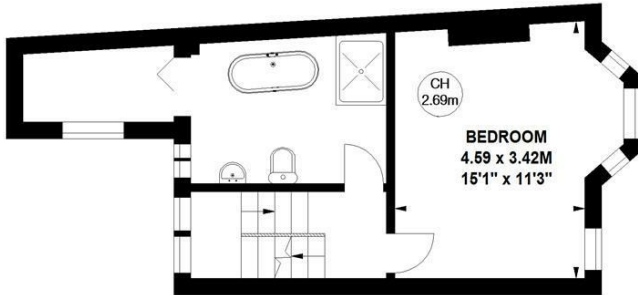
£660 Per Week

Duke Road, W4

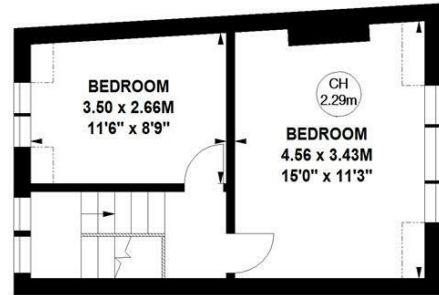
Approximate gross internal area

111.11 sq m / 1196 sq ft

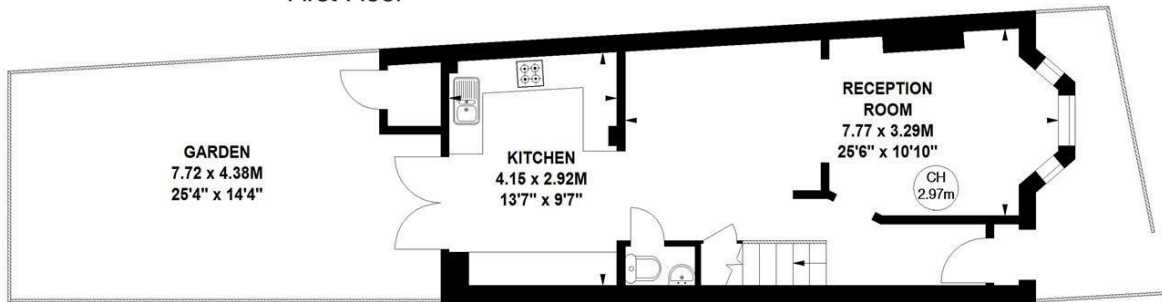
Key :
CH - Ceiling Height



First Floor

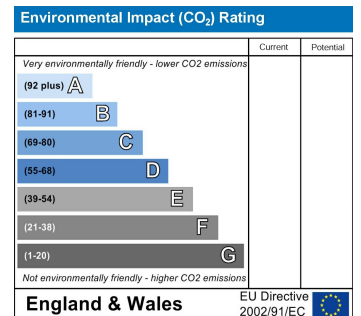
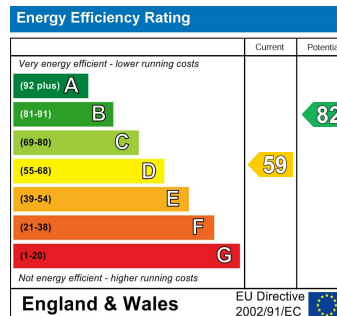


Second Floor



Ground Floor

Not to scale, for guidance only and must not be relied upon as a statement of fact.
All measurements and areas are approximate only



5-7 Turnham Green Terrace, Chiswick, London, W4 1RG

Tel 020 8747 8800

E-mail lettings@whitmanandco.com

Website www.whitmanandco.com