



Annandale Road, London, W4 2HH

A very nicely presented split level three bedroomed apartment situated in this very popular location in the heart of Chiswick just moments from Chiswick's main high road with its array of boutique shops & restaurants. Local retailers include M&S, Waitrose, Sainsbury & Tesco. The accommodation provides: 15'8 x 13'1 living room with opening onto a private balcony, fitted kitchen, entrance level cloakroom, stairs to 2nd floor, three bedrooms with fitted wardrobes, main bathroom, additional storage cupboards, gas fired central heating, lifts, private parking on first come basis & CPZ parking, communal gardens to rear. Local transport links Turnham Green Tube station, numerous local bus routes with convenient vehicular access via A4/M4 central London, Heathrow & The West, the property is offered furnished or unfurnished and available now

- Lovely central Chiswick location
- Great for transport links
- Living area with balcony
- Fitted kitchen
- Three Bedrooms
- Bathroom and separate cloakroom
- Communal gardens & parking(FCFS)
- Offered furnished or unfurnished
- Available Now

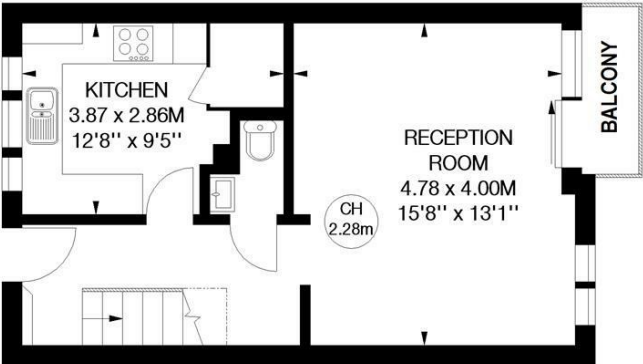
£1,650 Per Month

Annandale Road, W4

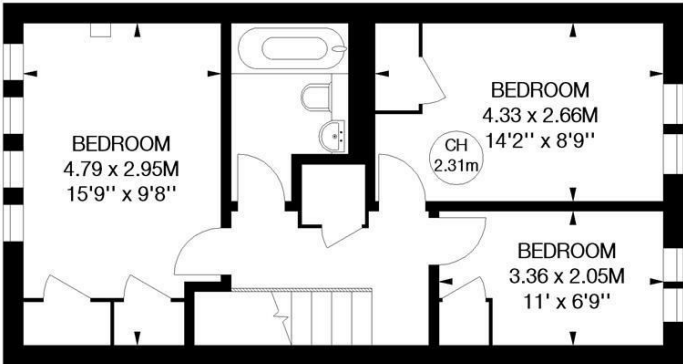
Approximate gross internal area
84.91 sq m / 914 sq ft



Key :
CH - Ceiling Height

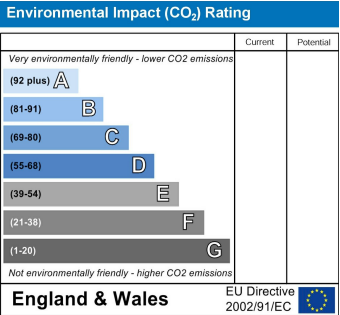
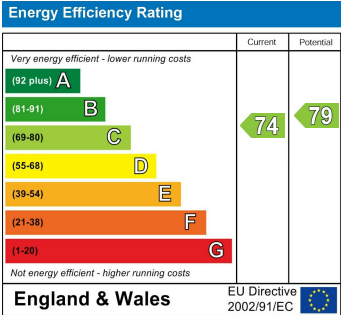


First Floor



Second Floor

Not to scale, for guidance only and must not be relied upon as a statement of fact.
All measurements and areas are approximate only



5-7 Turnham Green Terrace, Chiswick, London, W4 1RG
Tel 020 8747 8800
E-mail lettings@whitmanandco.com
Website www.whitmanandco.com