



*Jordan Fishwick*

GRANBY VILLAGE  
Granby House



## Granby House, Granby Village M1 7AR

Offers in excess of £215,000



### The Property

Online Viewing Tour or Physical Viewing Available - <https://www.youtube.com/watch?v=lkSkLcQYwFc>

EWS1 available/Mortgage buyers invited.

Jordan Fishwick are pleased to offer for sale this stunning larger than average TWO BEDROOM apartment in Granby House, Granby Village, M1. The apartment is located on the 1st floor of this stunning converted building with lift access to all floors and boasts 871 sq ft of stunning accommodation. The apartment briefly comprises of: entrance hall, large open plan living room/kitchen, two bedrooms, main bathroom and two storage cupboards in the hallway. The property is immaculately presented throughout and has had an update to

the kitchen and bathroom recently. Underground parking is available to rent or there is permit parking around the building included.

### Directions

Granby House is located just 10 minutes walk away from Piccadilly train station and offers easy access to The Gay Village, Oxford Road and Manchester University.

- Two Bedroom Apartment
- 1st Floor
- Larger Than Average
- EWS1 Form Available
- Mortgage Buyers Invited
- Permit Parking Available
- High Ceilings
- Immaculately Presented
- Central Location

**Postcode** - M1 7AR

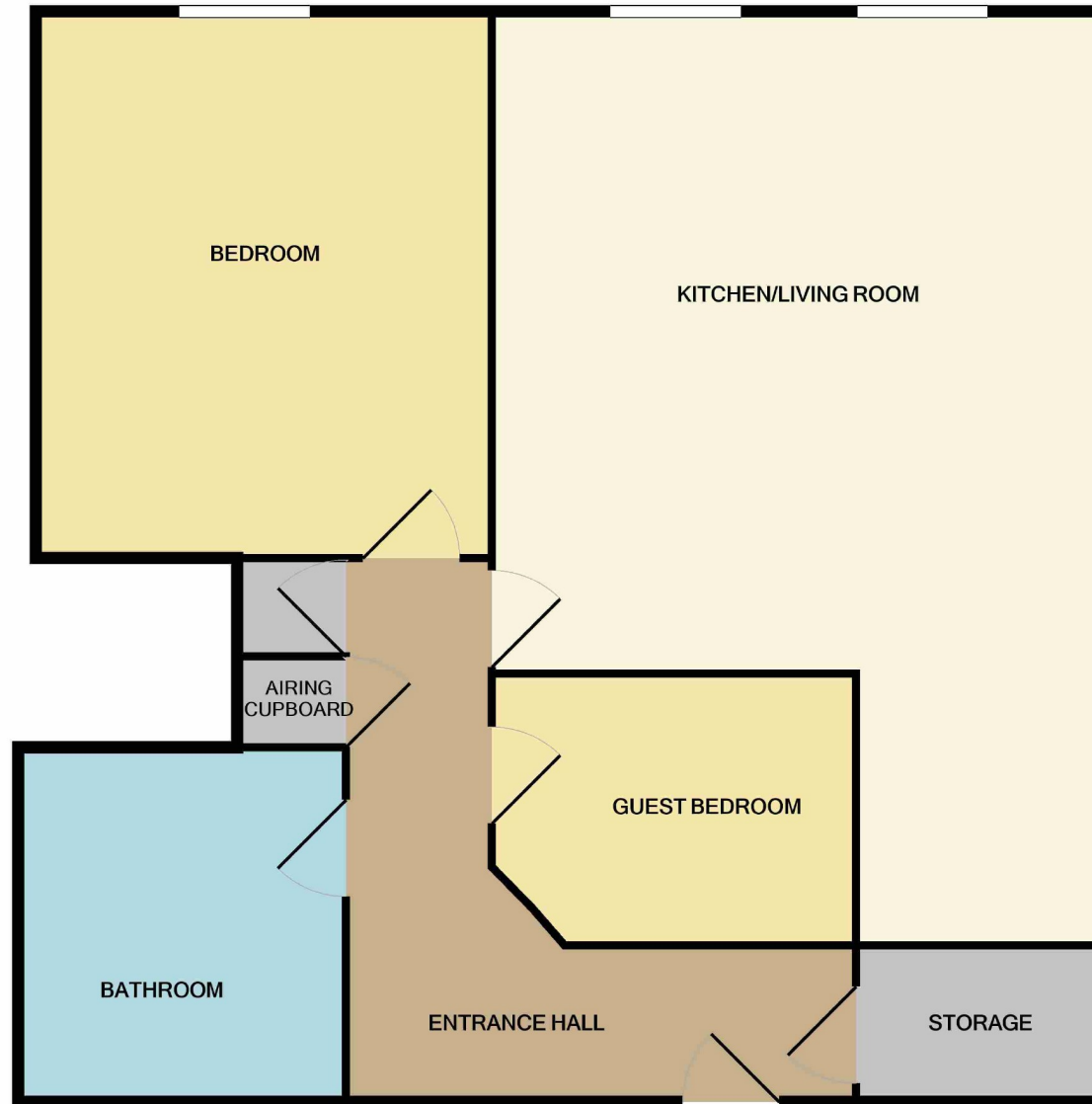
**EPC Rating** - E

**Floor Area** - 871 sq ft

**Local Authority** - Manchester Council

**Council Tax** - Band B





Measurements are approximate. Not to scale. Illustrative purposes only  
Made with Metropix ©2020



These particulars are believed to be accurate but they are not guaranteed and do not form a contract. Neither Jordan Fishwick nor the vendor or lessor accept any responsibility in respect of these particulars, which are not intended to be statements or representations of fact and any intending purchaser or lessee must satisfy himself by inspection or otherwise as to the correctness of each of the statements contained in these particulars. Any floorplans on this brochure are for illustrative purposes only and are not necessarily to scale.

Offices also at:  
Chorlton | Didsbury | Disley | Glossop | Hale | Macclesfield | Manchester | Sale | Wilmslow | Withington

68 The Arches, Whitworth Street West, Manchester, M1

0161 833 9499

[manchester@jordanfishwick.co.uk](mailto:manchester@jordanfishwick.co.uk)

[www.jordanfishwick.co.uk](http://www.jordanfishwick.co.uk)