



MILES ESTATE AGENTS

**8 Streamside Hillyfields
Taunton TA1 2LY**



A substantial detached 5 bedroom modern house, situated on the edge of this ever popular C G Fry development with spacious accommodation over 3 storeys, enclosed garden and fabulous cabin with woodburning stove.

Lovely position overlooking Kings College playing fields, double garage and additional off road parking. Early viewing highly recommended.





Features:

- Entrance Hall
- Spacious Sitting Room with Woodburning Stove
- Lovely Garden Room
- Modernised Kitchen/Dining Room
- Utility & Cloakroom
- Master Bedroom with En Suite
- 4 Further Double Bedrooms
- 2 Bathrooms
- Enclosed Garden
- Cabin With Woodburning Stove - Ideal Home Office
- Double Garage with Electric Roller Door
- Additional Off Road Parking Space
- Council Tax Band F

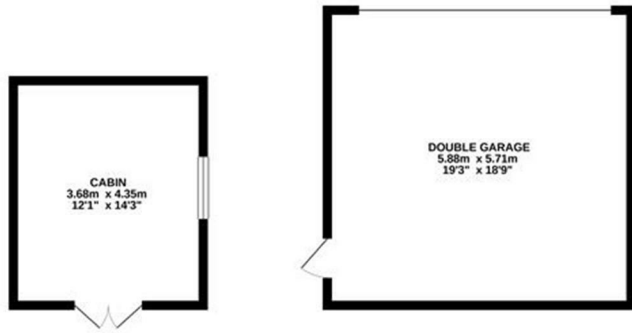




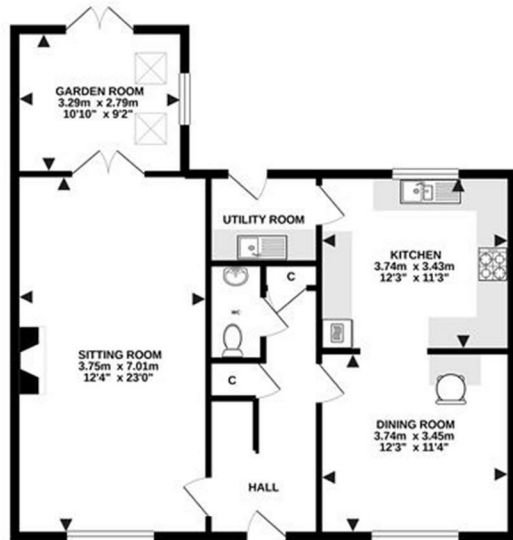




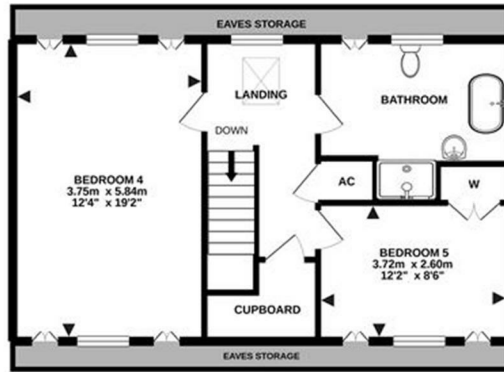
OUTBUILDINGS
49.6 sq.m. (524 sq.ft.) approx.



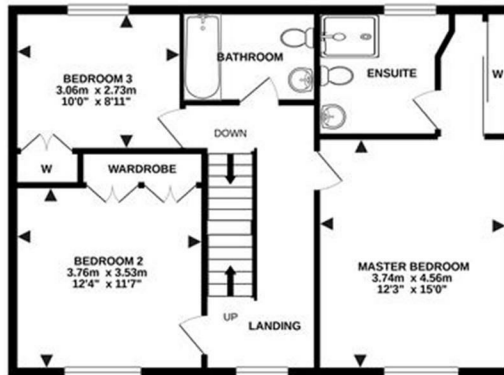
GROUND FLOOR
76.1 sq.m. (819 sq.ft.) approx.



2ND FLOOR
56.2 sq.m. (605 sq.ft.) approx.

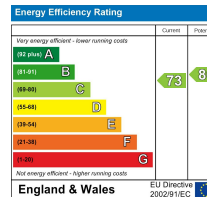


1ST FLOOR
67.5 sq.m. (727 sq.ft.) approx.



TOTAL FLOOR AREA : 249.4 sq.m. (2684 sq.ft.) approx.

Made with Metropix ©2020



Viewings strictly through the selling agents:

Miles Estate Agents

2 Piffin Lane, Bishops Lydeard, Taunton,
Somerset, TA4 3AS

Tel: 01823 470 500

lydeard@milesestateagents.co.uk

www.milesestateagents.co.uk

rightmove

Zoopla.co.uk

OnTheMarket.com

MILES ESTATE AGENTS

BEST
ESTATE AGENT GUIDE
2019 : EXCEPTIONAL
SALES

