

NEW
INSTRUCTION



£99,950

TWO BEDROOMS *FIRST TIME BUYERS* *INVESTORS* *POPULAR LOCATION* *CLOSE TO LOCAL SCHOOLS & AMENITIES*
GARDEN *WELL PRESENTED*

Townend Estate Agents offer for sale this TWO bedroom semi-detached property. Located in a popular residential area, close to a variety of amenities and close to excellent local schools. Well presented throughout with new Decor & flooring, providing 'walk in accommodation' for the discerning viewer. Ideal for first time buyers, young families & investors, with landlords expecting an income of around £550pcm. Benefitting from gas central heating, UPVC double glazing and good sized rear garden, this is not one to be missed.

The property comprises briefly: Entrance, spacious Lounge-Diner with patio door to rear garden, Kitchen fitted with a range of base & wall units. Upstairs are TWO good sized bedrooms and the family bathroom. Externally to the rear is a good sized garden with both lawn and patio areas, backing onto open fields. To the front is a dual level garden and on street parking.

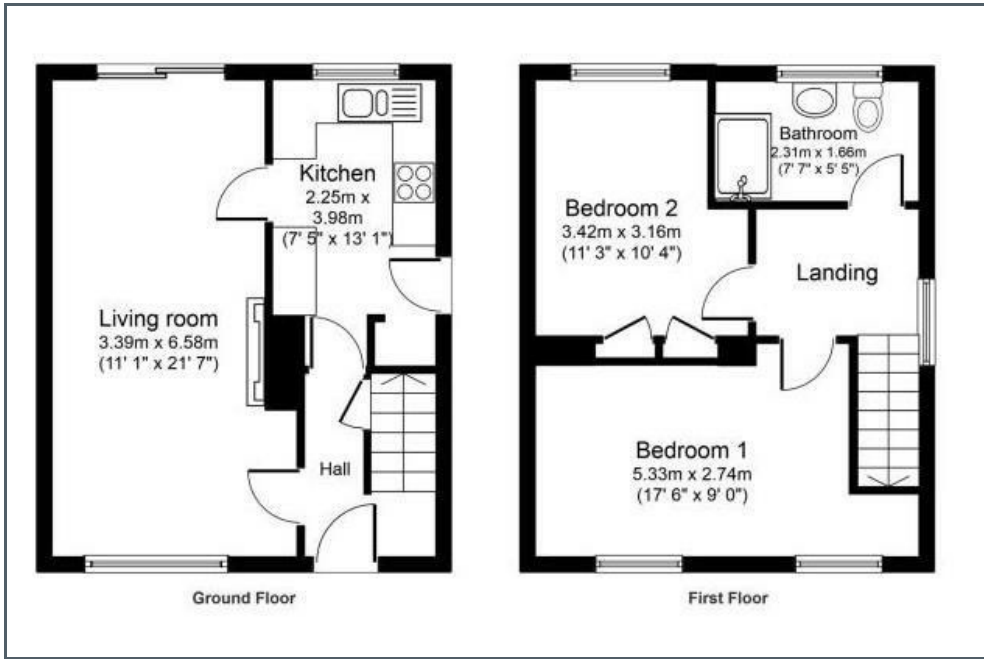
Ask us about...

AUCTION

CONVEYANCING

MORTGAGES

SURVEYS



These particulars do not form part of any contract and no statements are made without any responsibility on the part of their clients. Applicants must investigate for themselves that statements are correct and no agent whether the partner or employee has the authority to make any representation or warranty whatsoever in respect of this property.

IMPORTANT NOTICE: WHILST WE ENDEAVOUR TO MAKE OUR SALES DETAILS ACCURATE AND RELIABLE, THEY SHOULD NOT BE RELIED ON AS STATEMENTS OR REPRESENTATIONS OF FACT AND DO NOT IN ANY WAY CONSTITUTE A CONTRACT. PROSPECTIVE PURCHASERS SHOULD SATISFY THEMSELVES THAT DIMENSIONS ARE CORRECT AND THAT MAINS SERVICES ARE OPERATIONAL.

