



Arc House, London
Tower Bridge SE1

GARTONJONES.COM



Arc House, London Tower Bridge, SE1

GARTON JONES.COM

9 Albert
Embankment
London
SE1 7SP

Sales +44 (0) 20 7735 1888
nineelms@gartonjones.com
www.gartonjones.com

£520,000 Leasehold

A 1 double bedroom apartment on the 5th floor of approx. 524sq.ft (48.7sq.m) situated within this brand new development, only moments from Tower Bridge. This property has a South facing aspect overlooking the striking landscaped communal gardens and further benefits from an open plan reception room with a smart integrated kitchen with SMEG appliances. There is a fitted wardrobe to the bedroom, DAB, broadband and Sky+ HD enabled sockets, a bathroom suite and a full-width private balcony. The Arc is very centrally located in the heart of the fashionable and buzzing London Bridge Quarter. Residents will benefit from front desk concierge services and security. The scheme is only a short stroll to the historic riverside walkways around Tower Bridge as well as many chic bars and world-renowned restaurants. With a selection of excellent transport options close by, residents have numerous possibilities available to them. Note this building is currently awaiting its EWS1 sign off certificate and as such this may only currently work for cash buyers

Lease: 999 Years

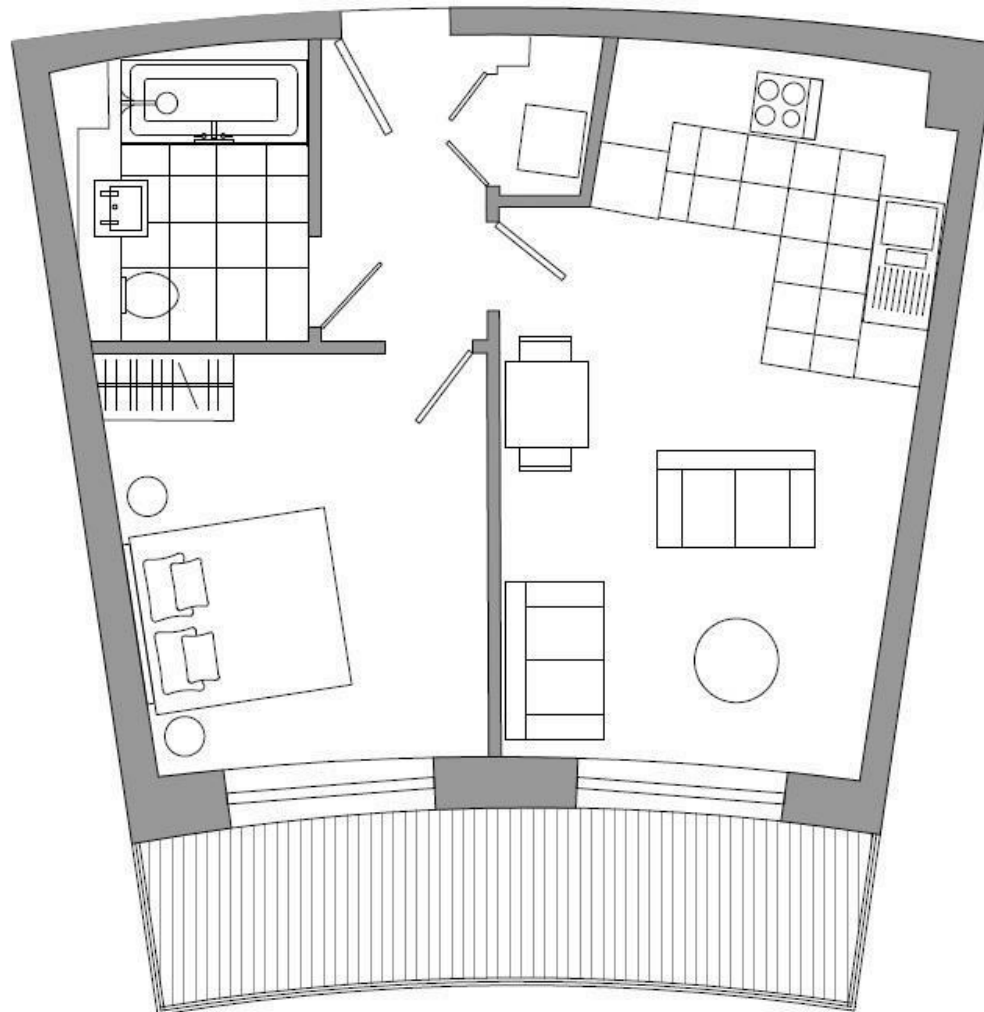
Service Charge: £3000pa

Ground Rent: £250pa

EPC certificate available on request.

- 524.00 sq.ft
- 1 Double Bedroom
- Bathroom
- Open Plan Reception Room with an Integrated Kitchen
- Full Width Private Balcony
- South Facing Aspect
- 5th Floor
- Close to Local Shopping Facilities and Transport Services
- Concierge





C504

Total area: 48.7 SQM 524 SQFT

Living / Dining

inc Kitchen 3.7 x 6.0m 11'9" x 19'7"

Bedroom 3.3 x 3.6m 10'9" x 11'5"

Pease note that balcony
arrangement varies with this
apartment style.

