



Hargwyne Street, Brixton, SW9

1 bedroom flat - conversion to let

£295 Per Week

Furnished

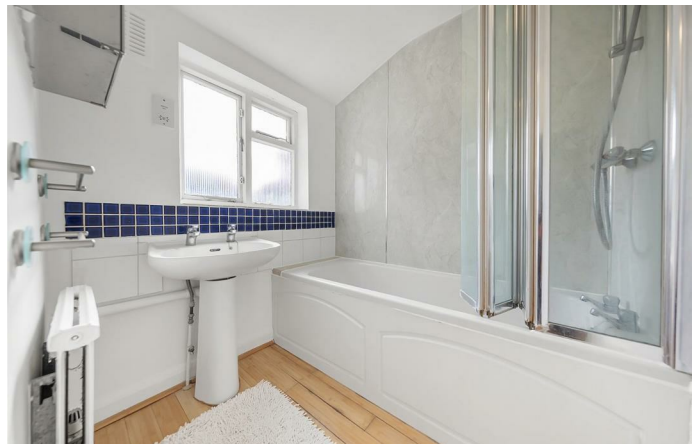
Property Details

A bright and airy one double bedroom, split-level apartment in an attractive Victorian terrace house, this property on Hargwyne Street is surrounded by similarly elegant period houses; either side and opposite. With nearly 550 square feet of internal living space on offer and an unrivalled location, perfectly sandwiched between amenities in Brixton, Clapham and Stockwell, this spacious flat will appeal to a wide range of purchasers. Stairs lead up from the ground floor entrance to the first floor and a bright landing leading to a generously sized, separate reception room spanning the width of the building with high ceilings, a fireplace and sash windows. Nestled adjacent to the reception room is a comfortable double bedroom with built-in wardrobes and views of the neighbouring gardens at the rear. Stairs lead down to a kitchen-diner with all you may need in terms of storage, worktop space and a convenient breakfast bar. A modern bathroom completes the rooms on this floor.

Features

- One double bedroom
- Victorian conversion
- Split-level
- Close to Brixton Station
- Separate kitchen
- 10 minute walk to high streets

Council tax band EPC rating D (65)



Hargwyne Street, Brixton, SW9



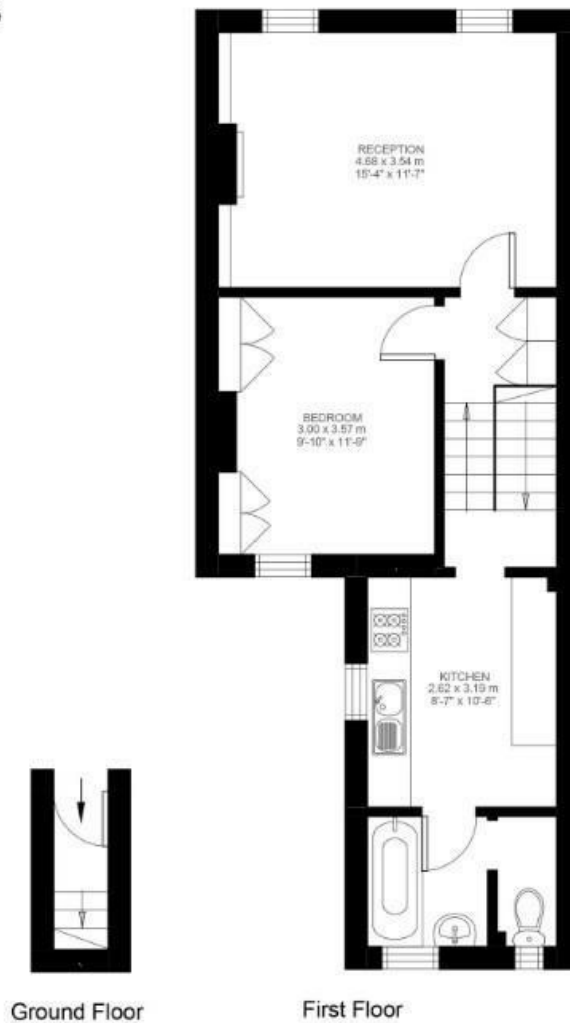
1 Bedroom Flat

Approx internal area:

542 sqft 50 sqm

While we do try our very best, floor plans are produced as a guide only and we take no responsibility for the precise accuracy with which any property is represented

Hargwyne Street



Hargwyne Street, Brixton, SW9

