



Bedford Court, Covent Garden WC2
£695,000 Subject to Contract

› 1 Bedroom › 1 Bathroom › West-facing balcony

TAVISTOCKBOW
RESIDENTIAL



- › Smart residential building
- › Bright aspect
- › Open plan kitchen reception
- › West facing open balcony
- › Central Covent Garden location
- › Quiet courtyard garden outlook
- › Close to theatres and restaurants
- › Very long lease
- › Low service charges
- › Lift

This bright, second floor, one bedroom apartment is situated in Bedford Court, a quiet pedestrianised enclave which is moments away from Covent Garden's famous Piazza and the high-end shops of Henrietta Street and King Street. This tranquil oasis has central London's theatres, cinemas and

galleries on its doorstep. Embankment Gardens and the River Thames are also in close proximity. The property benefits from being west facing so has plenty of afternoon light. There is a fabulous balcony which is situated just off the reception room which would be perfect for entertaining. There is a well-

equipped kitchen and good sized bathroom. The property's entrance, lift and stairway have been recently refurbished to a high standard. Transport links include Covent Garden and Leicester Square underground stations as well as Charing Cross mainland and underground station.





WHAT WE LOVE

- West facing balcony
- Open plan kitchen reception
- Smart building with lift
- Peaceful location
- Close proximity to theatres and restaurants
- Ideal as a pied-a-terre or central London home

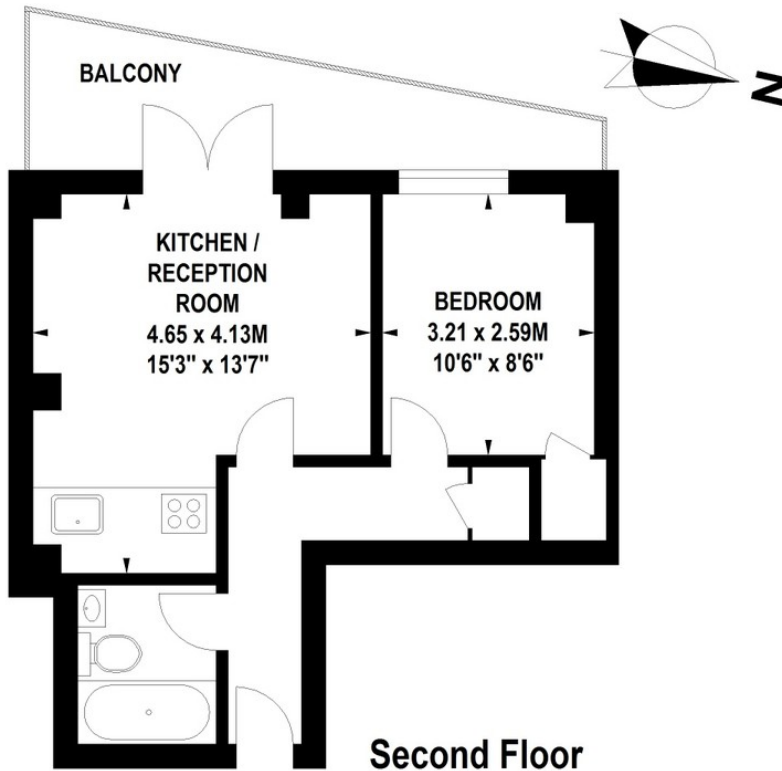
WHAT YOU NEED TO KNOW

- Newly refurbished communal areas
- Owner occupiers only building
- Share of Freehold
- 995 year lease
- £2100 service charge (approx).



Bedford Street, WC2

Approximate Gross Internal Area 36.5 sq m / 393 sq ft

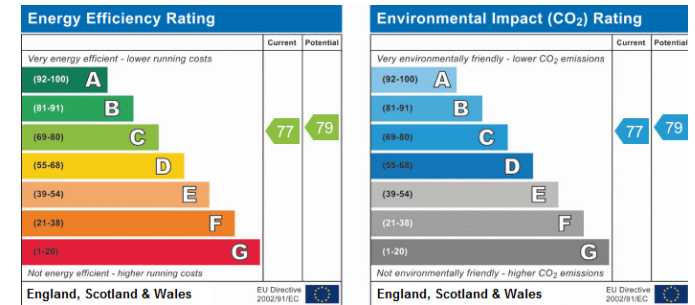


Floor Plan produced for Tavistock Bow by Mays Floorplans © . Tel 020 3397 4594

Illustration for identification purposes only, not to scale

All measurements are maximum, and include wardrobes and window bays where applicable

EPC



About Us

Tavistock Bow is an independent residential agency based in Covent Garden. We are niche, boutique, creative, knowledgeable, professional and approachable. We love what we do and that's why we do it.

Contact Us

- a.** 31 Long Acre, London, WC2E 9LA
- t.** 020 7477 2177
- e.** hello@tavistockbow.com
- w.** tavistockbow.com

