



Rocket, Grendon Road
Whiston, Northamptonshire

oriordanbond
TOWN & COUNTRY



Rocket

Grendon Road, Whiston

Northamptonshire NN7 1NP £500,000

Rocket is a recently constructed detached house set on a private development, of only five homes on the former site of Castle Ashby station. The house enjoys wonderful views of open countryside to both front and rear. The towns of Olney and Earls Barton are roughly equidistant and the village of Castle Ashby with the recently opened Falcon Hotel is a little over two miles away.

The property comprises hallway, WC, study, sitting room with bi-fold doors, beautifully fitted kitchen/dining room with integrated appliances including triple SMEG ovens. This lovely west facing room has a balcony overlooking meadow land. To the first floor are three double bedrooms with the master suite having both fitted dressing room and en-suite. There is also a 'Jack and Jill' family bathroom. Outside is a barn style garage with further parking and the gardens are enclosed and private. Electric air source under floor heating provides warmth throughout the house. No upper chain. (A/1454/M)

- Three bedroom detached home
- Master en-suite and dressing room
- Kitchen/diner with integrated appliances
- Enclosed private gardens
- Barn style garage and off road parking



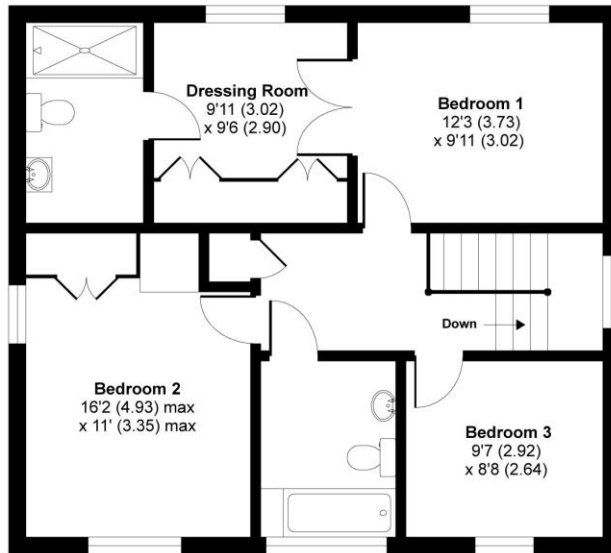




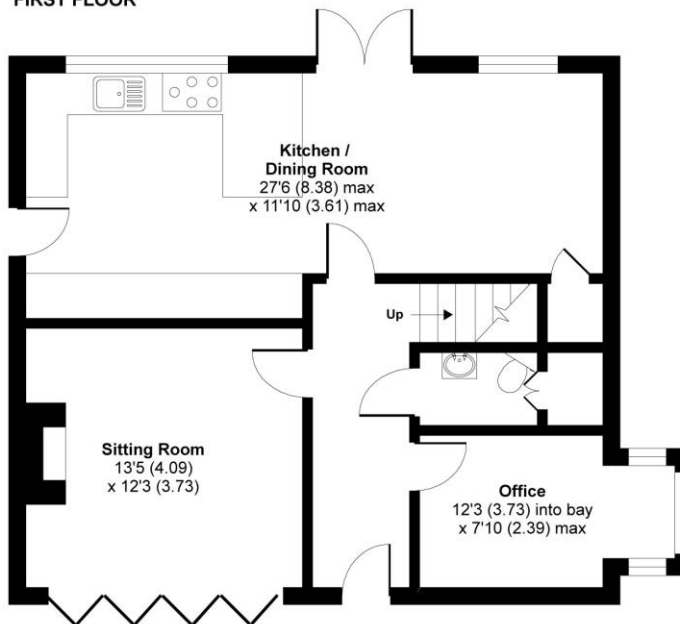
Grendon Road, Whiston, Northampton, NN7 1NP

Approximate Area = 1398 sq ft / 129.9 sq m

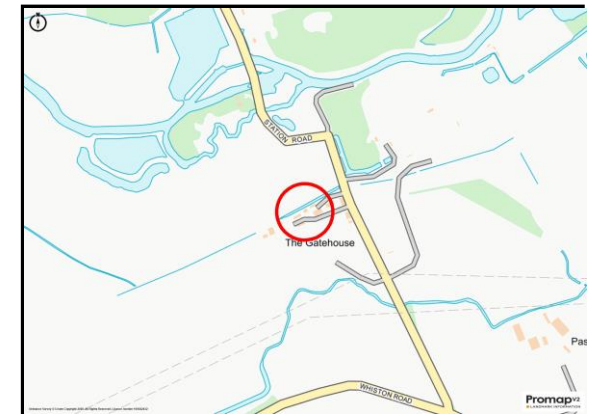
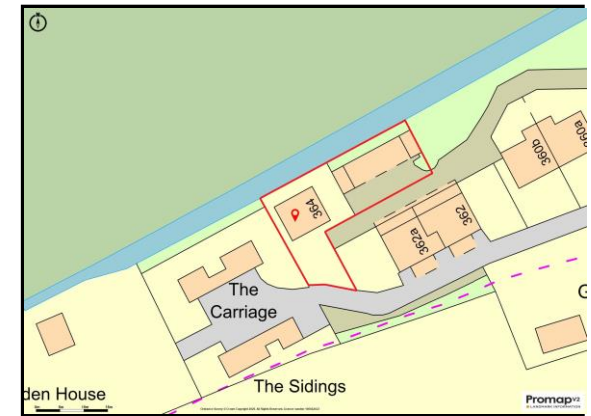
For identification only - Not to scale



FIRST FLOOR



GROUND FLOOR



Additional Information

- Northampton Town Centre: 8.7 Miles
- Northampton Train Station: 9.2 Miles
- School Catchment for Denton Primary, Cogenhoe Primary and Grendon Primary
- Council Tax Band: D
- Energy Efficiency Rating: B (82 / 100)

Viewing

Viewing is strictly by appointment

Disclaimer

O'Riordan Bond Estate Agents Limited has not tested apparatus, equipment, fittings or services and is unable to verify that they are in working order. The buyer is advised to obtain verification from their solicitor or surveyor

O'Riordan Bond Olney

01234 714003

olney@oriordanbond.co.uk



Floor plan produced in accordance with RICS Property Measurement Standards incorporating International Property Measurement Standards (IPMS2 Residential). © n/checom 2020. Produced for O'Riordan Bond. REF: 672481

