



**Clapham Court Terrace, Kings Avenue,**  
4 bedroom house for sale

**£950,000**  
Freehold

## Property Details

A substantial four double bedroom terraced house, set back quietly from Kings Avenue with a considerable square footage and generous room sizes, plus private outside space at the front and back of the property with a spacious, secure garage. The ground floor comprises a separate reception room, a dining room, a galley kitchen, WC and private garden with a garage. Characterful features and large windows are a running theme throughout the property, floor to ceiling double glass doors open out to the garden from the smart dining room, allowing a seamless flow of air through the downstairs and creating an ideal entertaining space. The living room is large and comfortable, complete with a convenient gas fireplace. On the upper floors you are met by three double bedrooms and a family sized modern bathroom. The loft-style fourth room packs a real punch with it's generous size and multiple sky-lights, creating an impressive and peaceful space to unwind at the end of the day. This room is complimented by plenty of eaves storage and a further family sized bathroom on the top floor. The property boasts huge potential, a blank canvas to make truly your own and plenty of options in terms of re-purposing rooms and altering the layout internally.

## Features

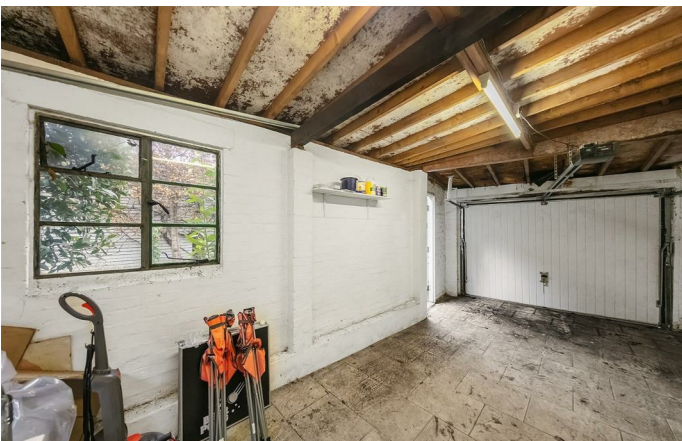
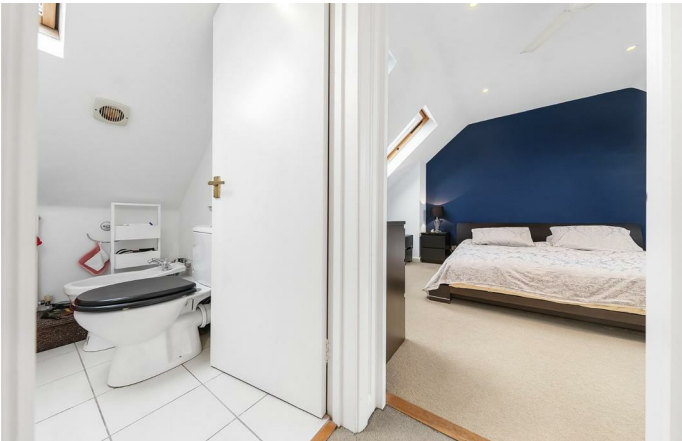
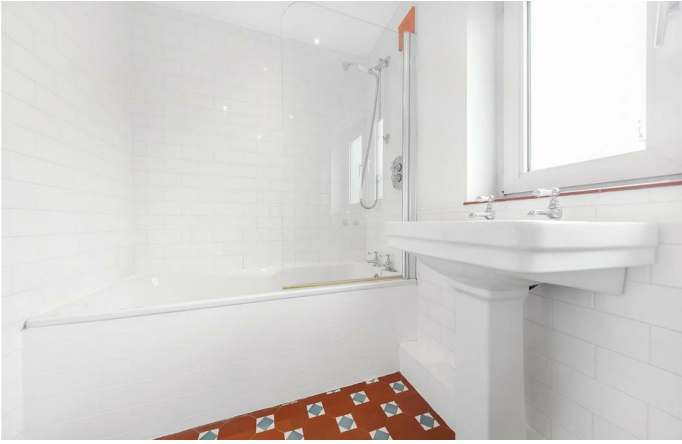
- Four double bedrooms
- Two bathrooms (and a WC)
- Light and airy throughout
- 1800 square feet of internal space
- Local amenities in minutes
- Secure garage
- Private front and rear gardens
- Freehold
- Chain-Free

Council tax band E    EPC rating D (56)











## 4 Bedroom House

Approx internal area:

**1513 sqft 141 sqm**

(EXCLUDING EAVES STORAGE & GARAGE)  
EAVES STORAGE & GARAGE 26.49 SQ.M / 285 SQ.FT  
INCLUSIVE TOTAL AREA 167.49 SQ.M / 1803 SQ.FT

While we do try our very best,  
floor plans are produced as a  
guide only and we take no  
responsibility for the precise  
accuracy with which any  
property is represented





Clapham Court Terrace, Kings Avenue, Clapham, SW4

