



Dalberg Road, Brixton, SW2

4 bedroom house - terraced for sale

£1,325,000

Freehold

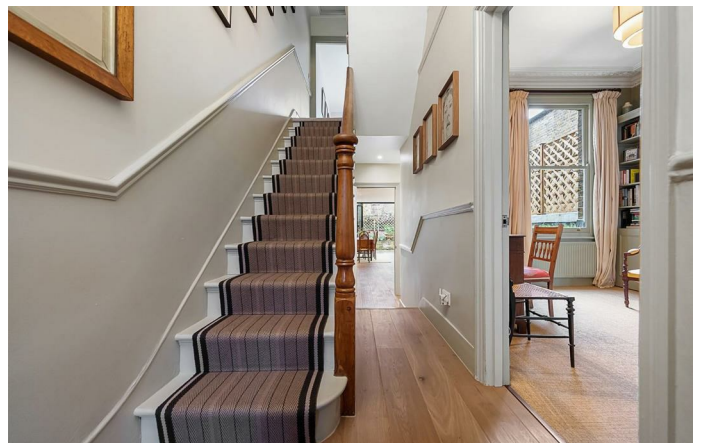
Property Details

We are delighted to offer to market this handsome, four double bedroom Victorian terraced house, nestled peacefully within a highly sought-after residential pocket of roads, a short walk from both central Brixton and Brockwell Park/Herne Hill. Lovingly cared for by the current owners and packed full of characterful features which include; original fireplaces and wood burning stove, beautiful embellished ceilings and considerate bespoke storage throughout. With four comfortable double bedrooms and a secluded mature garden to match, it is hard to remind yourself that you are a short stroll from the heart of Brixton. Situated at the front of the building there is a bright double aspect reception room with a bay window, at the back of the building is a wonderful and newly installed contemporary kitchen diner, complete with floor to ceiling crittal style glass bi-folding doors that open onto the charming private garden, flooding the space with light and air and creating a truly gorgeous atmosphere within. On the upper floors sit four double bedrooms and two modern bathrooms. The master bedroom is a fantastic size, running the width of the property with a fireplace and built-in wardrobes. The other three bedrooms are all ample in size and the recently converted loft boasts a fully equipped en-suite bathroom.

Features

- Four double bedrooms
- Two contemporary bathrooms
- Victorian terraced house
- Characterful original features
- Mature private garden
- Close to Brockwell Park
- Highly sought-after residential street
- Walking distance to Brixton and Herne Hill stations
- Over 1700 square feet of internal living space

Council tax band E EPC rating E (51)



Dalberg Road, Brixton, SW2



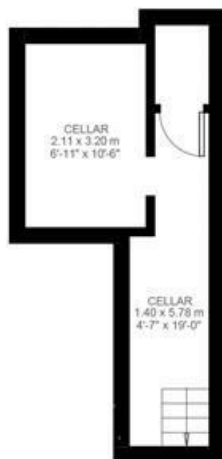
4 Bedroom House

Approx internal area:

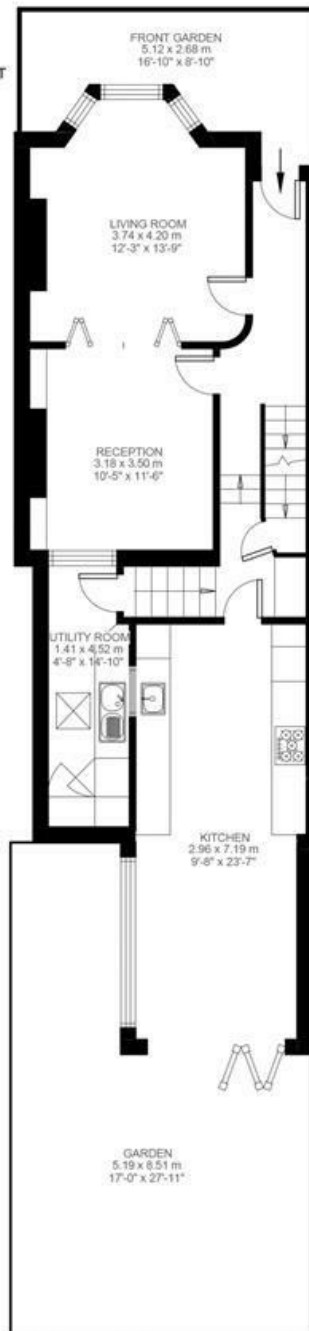
1705 sqft 158 sqm

(EXCLUDING EAVES STORAGE)
EAVES STORAGE 10.08 SQ.M / 109 SQ.FT
INCLUSIVE TOTAL AREA 170.08 SQ.M / 1831 SQ.FT

While we do try our very best,
floor plans are produced as a
guide only and we take no
responsibility for the precise
accuracy with which any
property is represented



Lower Ground Floor

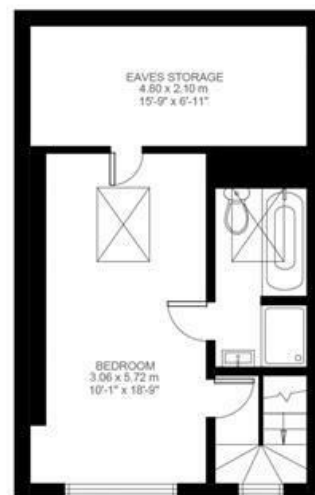


Ground Floor

Dalberg Road



First Floor



Second Floor



Dalberg Road, Brixton, SW2

