



Mayfield Road, W12 9LT

A recently refurbished one bedroom apartment situated within this popular private development in a nice residential area, local shopping facilities are close at hand whilst further afield are the more extensive shopping and restaurant facilities of Chiswick, Acton High street and Stamford brook.

Accommodation provides: large bright and open plan living area with galley kitchen, bedroom with custom built wardrobes and overhead storage, Luxury fully tiled shower room, communal gardens and designated private parking space

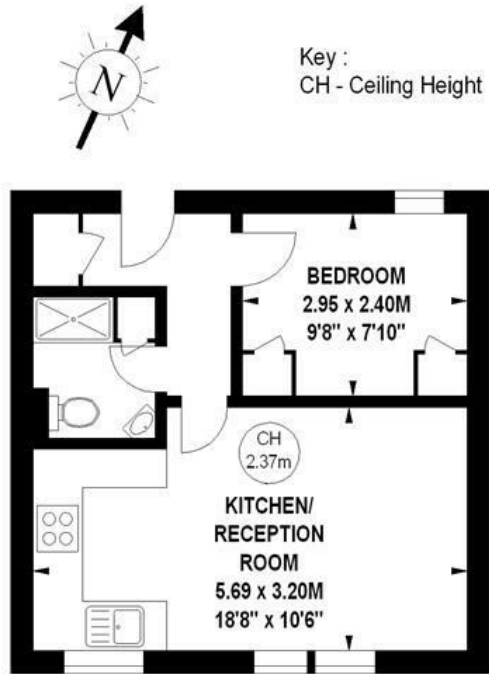
Local transport links include Stamford brook tube station, numerous local bus routes with convenient vehicular access via A4/M4 central London Heathrow & The West, the property is available early January and is offered unfurnished

- Nice residential development
- Recently refurbished throughout
- Open plan living room with galley kitchen
- Bedroom with fitted wardrobes
- Luxury shower room
- Electric heating & Hot water
- Communal areas
- Private parking space
- Available early January
- Unfurnished

£1,100 Per Month

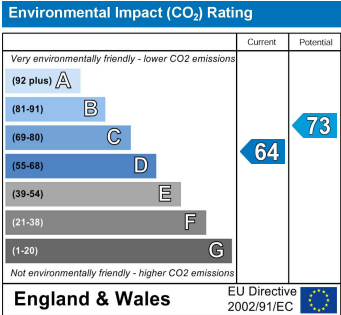
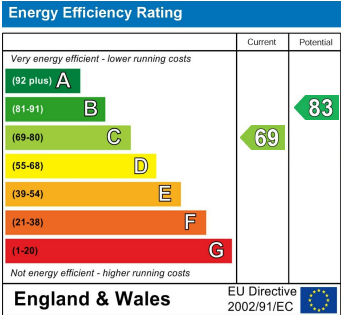
Wellington Court, W12

Approximate gross internal area
32.79 sq m / 353 sq ft



First Floor

The floor plan is not to scale and measurements and areas shown are approximate and therefore should be used for illustrative purposes only. The plan has been prepared in accordance with the RICS code of Measuring Practice and whilst we have confidence in the information produced, it must not be relied on. If there is any aspect of particular importance, you should carry out or commission your own inspection of the property.
Copyright of FeaturePRO.



5-7 Turnham Green Terrace, Chiswick, London, W4 1RG
Tel 020 8747 8800
E-mail lettings@whitmanandco.com
Website www.whitmanandco.com