



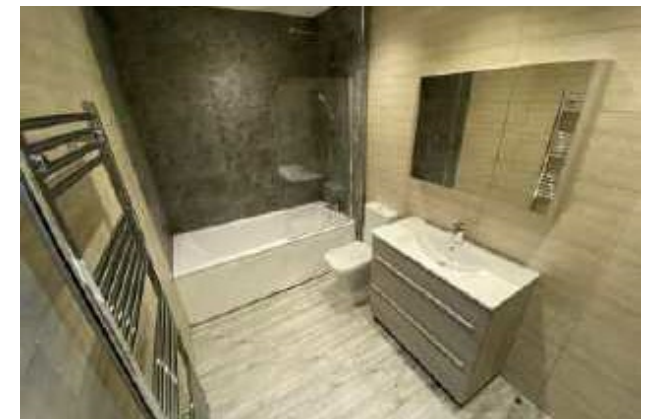
Jordan fishwick

MILLENNIUM QUARTER
Tobacco Factory Phase III



Tobacco Factory Phase III, Millennium Quarter M4 4DH

£900 Per calendar month



The Property

Please follow link to video walk-through... <https://youtu.be/QpX40uKCNBI>

Available now! A superb opportunity to rent this beautiful apartment on the second floor of Tobacco Factory Phase III. Fantastic location moments from Victoria Station and the hustle and bustle of the Northern Quarter. Entrance hallway, huge double height living area with large windows allowing maximum natural light, dining area and a well-equipped kitchen with a range of appliances including dishwasher, fridge/freezer, washer/dryer, oven and hob. The bathroom is stylish and newly fitted, large master bedroom with en-suite and good sized second bedroom. Council Tax Band D.

SECURE PARKING INCLUDED!

Directions

- Available Now
- Beautiful conversion
- Two bedrooms
- Two bathrooms
- Parking
- Spacious apartment
- Council Tax Band D
- EPC Rating D

Postcode - M4 4DH

EPC Rating - C

Floor Area - sq ft

Local Authority - Manchester City Council

Council Tax - Band D



