



*Jordanfishwick*

NORTHERN QUARTER  
Smithfield Building



## Smithfield Building, Northern Quarter M4 1LA

Offers in excess of £270,000



### The Property

Online Viewing Tour -<https://youtu.be/siQPhPyltII>  
EWS1 Available/Mortgage Buyers Invited!

Jordan Fishwick are pleased to offer this 883 sq ft two bedroom apartment in sought after Smithfield Buildings in the Northern Quarter. Located on the top floor of this development, the apartment boasts a wealth of original features such as exposed brickwork, wooden beams, split level rooms and double height ceilings. The apartment is tastefully decorated and comprises of large and bright living area, well equipped kitchen off the living room. Good sized master bedroom with added benefit of plenty of storage & fitted wardrobes, main bathroom with shower. Off the hallway there is a further tiled shower room. There is a ladder from

the hallway to the additional bed deck/study area with apex ceiling and velux window offering a useful place for guests to stay. Not to be missed! Parking available in adjacent NCP at additional cost.

### Directions

Smithfield Building is located in the heart of the Northern Quarter, just a few minutes walk from Piccadilly Gardens.



- Two Bedroom Apartment
- Top Floor
- Northern Quarter Location
- Bed Deck/Study Area
- Ample Storage
- Exposed Brickwork
- Room
- Bike Storage
- EWS1 Form Available/Mortgage Buyers Invited

**Postcode** - M4 1LA

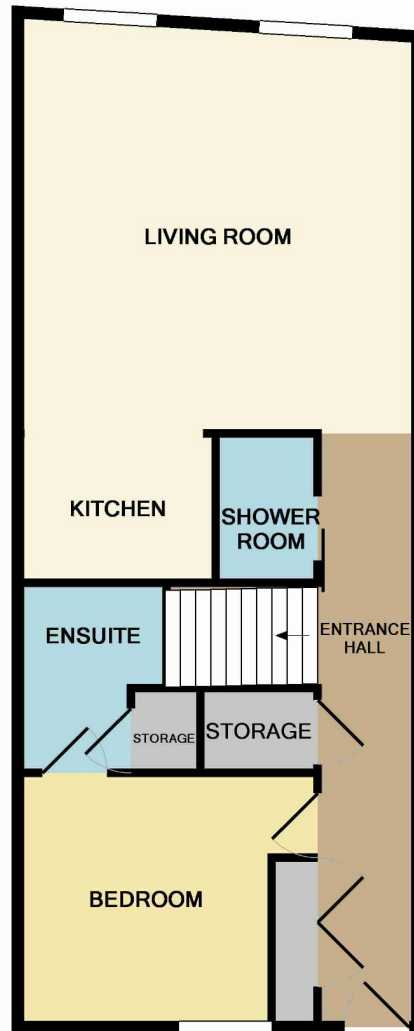
**EPC Rating** - D

**Floor Area** - 883 sq ft

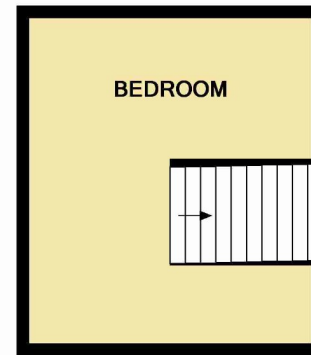
**Local Authority** - Manchester Council

**Council Tax** - Band F





GROUND FLOOR



1ST FLOOR

Measurements are approximate. Not to scale. Illustrative purposes only  
 Made with Metropix ©2014



These particulars are believed to be accurate but they are not guaranteed and do not form a contract. Neither Jordan Fishwick nor the vendor or lessor accept any responsibility in respect of these particulars, which are not intended to be statements or representations of fact and any intending purchaser or lessee must satisfy himself by inspection or otherwise as to the correctness of each of the statements contained in these particulars. Any floorplans on this brochure are for illustrative purposes only and are not necessarily to scale.

Offices also at:  
 Chorlton | Didsbury | Disley | Glossop | Hale | Macclesfield | Manchester | Sale | Wilmslow | Withington

68 The Arches, Whitworth Street West, Manchester, M1

0161 833 9499

manchester@jordanfishwick.co.uk

www.jordanfishwick.co.uk