

Parkheath

Sold on Service

The Porticos, Belsize Avenue NW3

£1,600,000 | Share of freehold



Outstanding, well proportioned garden apartment

Sole use of private 32' rear garden

Secure underground parking space

3 double bedrooms and 3 bathrooms

Ground floor in exclusive portered block

That was sympathetically restored in the 1990's

1300 sq ft approx

Spacious 26' reception with doors to garden

11' separate kitchen

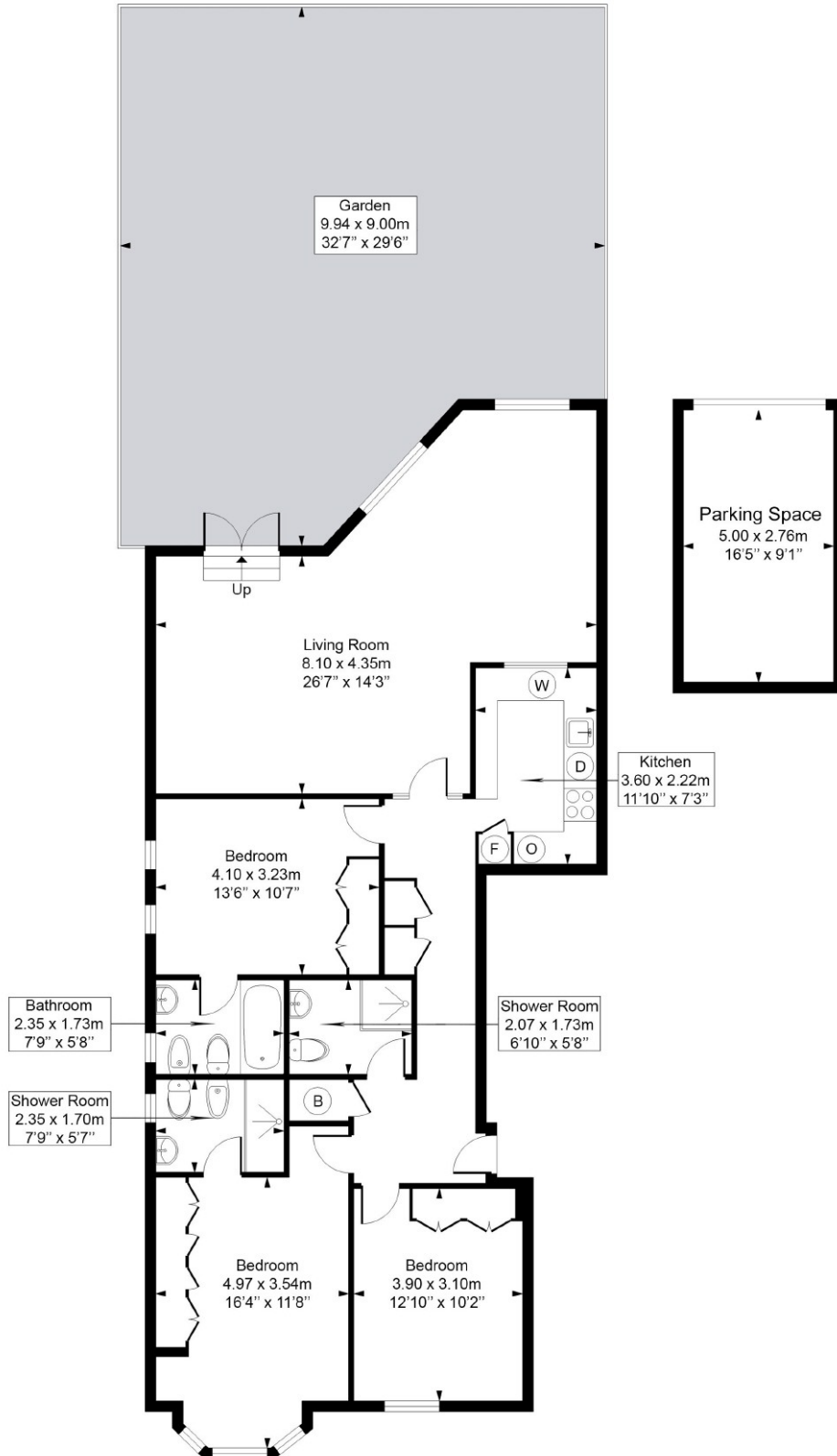
No ongoing chain

Share of freehold plus long lease

Located perfectly for all Belsize Park amenities

Belsize Avenue

Approximate Gross Internal Area = 1305 sq.ft / 121.2 sq.m
(Excluding Garage)



Ground Floor

Measured in accordance with RICS guidelines. Every attempt is made to ensure accuracy
However all measurements are approximate.

The floor plan is illustrative purposes only and is not to scale

ELLIE CLAIRE PHOTOGRAPHY LTD

www.ellieclairephotography.com

The particulars do not constitute part of an offer or contract. The particulars, including text, photographs and plans, are for the guidance only of prospective purchasers/tenants and must not be relied upon as statements of fact. The descriptions provided therein represent the opinion of the author and whilst given in good faith should not be construed as statements of fact. Nothing in these particulars shall be deemed a statement that the property is in good condition or otherwise or that any services or facilities are in good working order. All measurements are approximate.