



Mannington Gardens

East Hunsbury, Northampton

oriordanbond



Mannington Gardens

East Hunsbury

Northampton NN4 0XG

PRICE £199,995

An immaculately presented two double bedroom home, situated in a cul-de-sac, within the popular area of East Hunsbury, benefiting from no upward chain.

This property has been modernised by the current owner and offers accommodation comprising entrance hall with stairs to the first floor, re-fitted cloakroom off with utility area, re-fitted kitchen with integrated appliances and sitting/dining room with storage cupboard and patio doors leading to the garden. To the first floor is access to a boarded loft space with power, lighting and a window. There are two double bedrooms with fitted wardrobes and a storage/linen cupboard to bedroom two and a contemporary re-fitted bathroom which now offers a stunning walk-in shower cubicle with 'rainfall' shower head. Outside to the front is a small garden and pathway and to the rear is a good size south facing garden with gated access to the driveway. Further benefits include uPVC double glazing and gas radiator heating. (A/620/M)

Additional Information

- Northampton Town Centre: 4.3 Miles
- Northampton Train Station: 4.1 Miles
- Council Tax Band: C
- Energy Efficiency Rating: C (72 / 89)

Viewing

Viewing strictly by appointment – details below

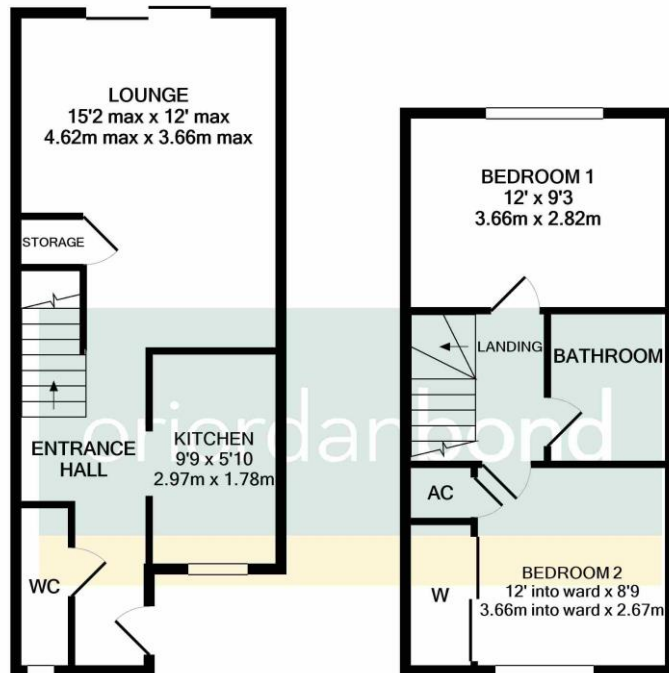
Disclaimer

O'Riordan Bond Estate Agents Limited has not tested apparatus, equipment, fittings or services and so cannot verify they are in working order. The buyer is advised to obtain verification from their solicitor or surveyor.

O'Riordan Bond Hunsbury

01604 706007

hunsbury@oriordanbond.co.uk



GROUND FLOOR
APPROX. FLOOR
AREA 323 SQ.FT.
(30.0 SQ.M.)

1ST FLOOR
APPROX. FLOOR
AREA 297 SQ.FT.
(27.6 SQ.M.)

TOTAL APPROX. FLOOR AREA 620 SQ.FT. (57.6 SQ.M.)

Whilst every attempt has been made to ensure the accuracy of the floor plan contained here, measurements of doors, windows, rooms and any other items are approximate and no responsibility is taken for any error, omission, or mis-statement. This plan is for illustrative purposes only and should be used as such by any prospective purchaser. The services, systems and appliances shown have not been tested and no guarantee as to their operability or efficiency can be given
Made with Metropix ©2020