



Norfolk House, Westminster
London SW1P

GARTONJONES.COM



Norfolk House, Westminster London, SW1P

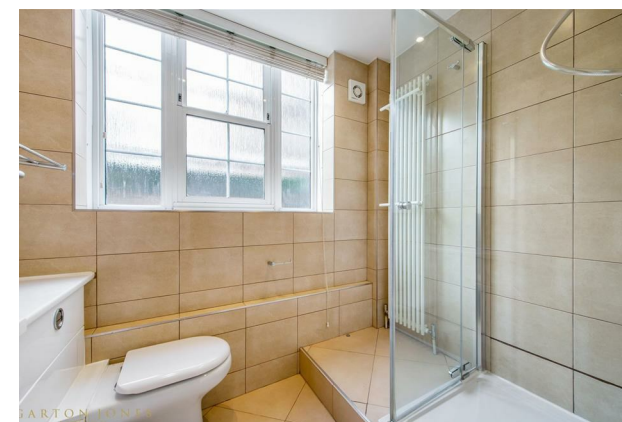
GARTON JONES.COM

49 Marsham Street Lettings:
London +44 (0) 20 7340 0480
SW1P 3DP westminster@gartonjones.com
www.gartonjones.com

£300 Per Week

A one double bedroom apartment located in this well maintained red brick building in the heart of Westminster, close to the River Thames, the Houses of Parliament and Buckingham Palace. The property is offered furnished and further benefits from a bright reception room, a smart kitchen, modern bathroom suite and ample storage. Norfolk House is located only moments from the transport links of St James's Park, Westminster and Victoria which are all within walking distance. There is an abundance of local amenities including a variety of retail stores nearby including a House of Fraser Department store, the Cardinal Place Shopping Centre, Sainsburys and Tesco Express. The transport links of St James's Park, Westminster and Victoria are all within walking distance. Garton Jones' Westminster office is located a few roads away so are readily available for viewings.

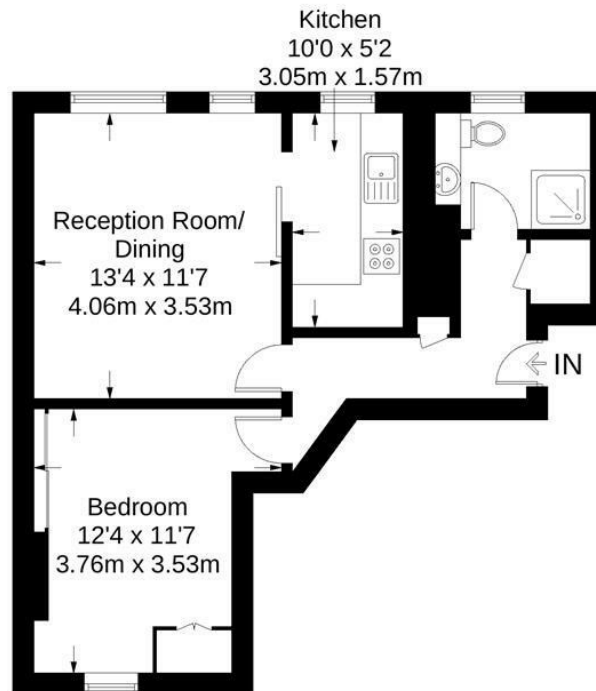
- 488 sq.ft (43.8sq.m)
- 1 Bedroom Apartment
- Reception Room
- Separate Integrated Kitchen
- Modern Bathroom
- Furnished
- Ample Storage
- Close to Local Amenities Including Shops, Restaurants & Transport Links
- Walking Distance to St James's Park, Westminster and Victoria Station



Norfolk House



Approximate Gross Internal Area = 468 sq ft / 43.5 sq m



Lower Ground Floor

Not to scale, for guidance only and must not be relied upon as a statement of fact.
All measurements and areas are approximate only and have been prepared in
accordance with the current edition of the RICS Code of Measuring Practice.

