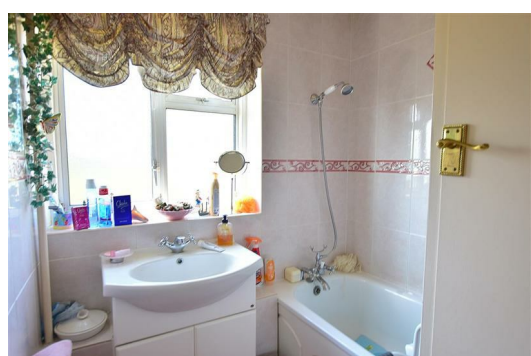




Holburne Road, London, SE3 8JG
£1,450

AVAILABLE NOW!!!

Come and take and look at this fabulous three bedroom family home offered.



Porch 5'11 x 2'8 (1.80m x 0.81m)

Living room 19'5 x 10'9 (5.92m x 3.28m)

Kitchen 12'5 x 10'5 (3.78m x 3.18m)

Master Bedroom 12'9 x 12' (3.89m x 3.66m)

Bedroom 2 12'8 x 9'2 (3.86m x 2.79m)

Bedroom 3 8'11 x 8'9 (2.72m x 2.67m)

Bathroom 5'9 x 5'8 (1.75m x 1.73m)

W/C 6'3 x 2'5 (1.91m x 0.74m)

Garden 66' (20.12m)

Energy Efficiency Rating		Current	Potential
Very energy efficient - lower running costs			
(92 plus) A			
(81-91) B			
(69-80) C			
(55-68) D			
(39-54) E			
(21-38) F			
(1-20) G			
Not energy efficient - higher running costs			
England & Wales	EU Directive 2002/91/EC		

Environmental Impact (CO ₂) Rating		Current	Potential
Very environmentally friendly - lower CO ₂ emissions			
(92 plus) A			
(81-91) B			
(69-80) C			
(55-68) D			
(39-54) E			
(21-38) F			
(1-20) G			
Not environmentally friendly - higher CO ₂ emissions			
England & Wales	EU Directive 2002/91/EC		

