



Sky Gardens, London  
Nine Elms SW8

GARTONJONES.COM



# Sky Gardens, London Nine Elms, SW8

GARTON JONES.COM

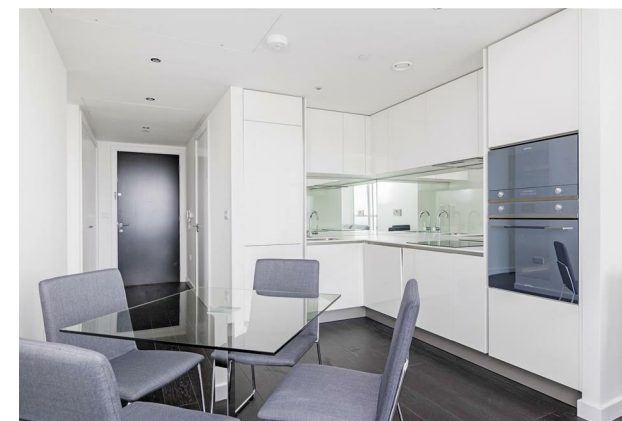
9 Albert  
Embankment  
London  
SE1 7SP

Lettings:  
+44 (0) 20 7735 1888  
nineelms@gartonjones.com  
www.gartonjones.com

## £510 Per Week

Stunning two double bedroom apartment on the 25th floor (with lift) of approx. 731sq.ft (67.9sq.m) in the much anticipated Sky Gardens development. This property will have floor to ceiling windows and quite spectacular views. Further benefits include an open plan reception room, integrated kitchen with Siemens appliances (or similar), a Winter garden of approx. 51sq.ft (4.7sq.m), 2 luxury bathroom suites, comfort cooling to the reception and bedroom, under floor heating, a 24 hour concierge and residents will also have access to a smart gymnasium located in the 8th floor sky garden. Sky Gardens will be located almost directly opposite the entrance to the Nine Elms Tube extension as well as being a few minutes' walk from the excellent transport services of Vauxhall. The development also benefits from having a Sainsbury Superstore located on the opposite side of the road which is open from 7am- 11pm daily.

- 731sq.ft (67.9sq.m)
- 2 Double Bedroom Apartment
- Open Plan Reception Room
- Kitchen with Siemens Integrated Appliances
- 2 Luxury Bathrooms (1 En-Suite)
- 24 Hour Concierge
- Comfort Cooling & Under Floor Heating
- Resident's Gymnasium & Access to Roof Terrace
- Close to Local Amenities Including Shops, Restaurants & Transport Links
- Walking Distance to Vauxhall Station





Living / Kitchen	6.5m x 3.4m	21'3"ft x 11'2"ft
Master Bedroom	5.1m x 4.2m	16'8"ft x 13'9"ft
Bedroom Two	4m x 2.4m	13'1"ft x 7'10"ft
Ensuite	2.4m x 1.4m	7'10"ft x 4'7"ft
Bathroom	2m x 2.1m	6'6"ft x 6'10"ft
<b>NET SALEABLE AREA</b>	<b>67.9 SQ M</b>	<b>731 SQ FT</b>
Winter Garden	4.2 SQ M	45 SQ FT

