

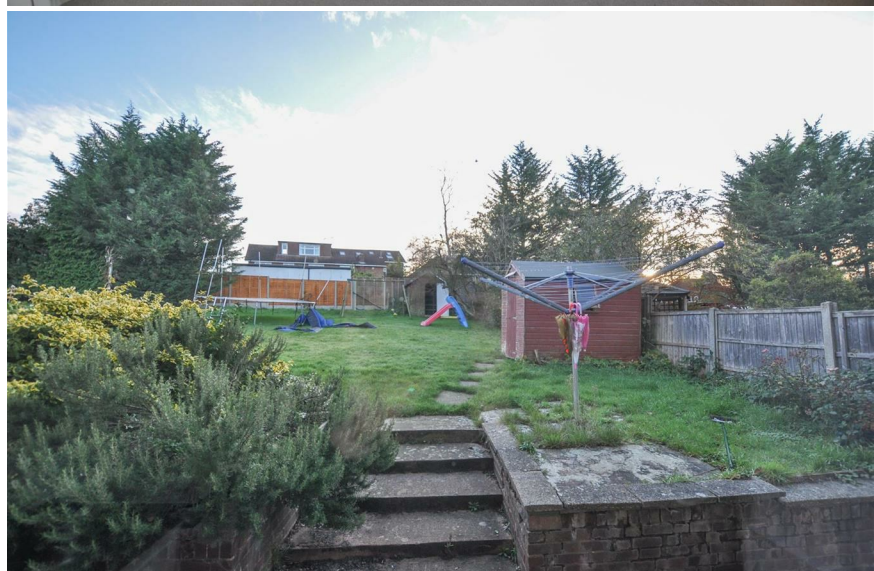


# Tewin Close

, AL4 9XL

**£1,400 PCM**

- Available Now
- Three Double Bedrooms
- Large Shared South Facing Garden
  - Gas Central Heating
  - Expansive Loft Space
  - Shared Driveway
  - Popular Location
- Electric Rates Included
- Close Proximity To Sandringham
- Council Tax Band D



**JW&Co St Albans**  
**3 London Road, St Albans, Hertfordshire, AL1 1LA**  
**01727 844444**  
**stalbans@jwandco.co.uk**





**WC & SHOWER ROOM:**  
4.7 x 1.1 (15'5" x 3'7")

**SITTING ROOM:**  
3.9 x 3.9 (12'9" x 12'9")

**DINING ROOM:**  
3.9 x 3.1 (12'9" x 10'2")

**KITCHEN:**  
3.0 x 2.6 (9'10" x 8'6")

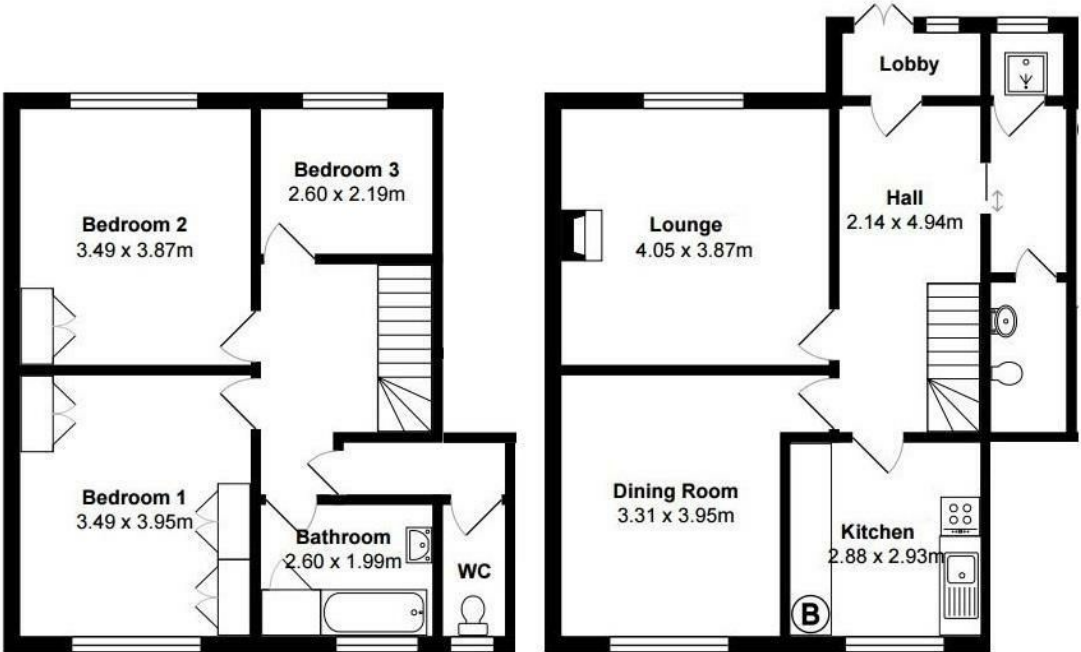
**BEDROOM ONE:**  
3.9 x 3.4 (12'9" x 11'1")

**BEDROOM TWO:**  
3.9 x 3.5 (12'9" x 11'5")

**BEDROOM THREE:**  
2.7 x 2.3 (8'10" x 7'6")

**BATHROOM:**  
2 x 2.5 (6'6" x 8'2")

**SHARED REAR GARDEN:**



Energy Efficiency Rating		Current	Potential
Very energy efficient - lower running costs			
(92 plus)	A		83
(81-91)	B		
(69-80)	C	71	
(55-68)	D		
(39-54)	E		
(21-38)	F		
(1-20)	G		
Not energy efficient - higher running costs			
England & Wales		EU Directive 2002/91/EC	

Environmental Impact (CO <sub>2</sub> ) Rating		Current	Potential
Very environmentally friendly - lower CO <sub>2</sub> emissions			
(92 plus)	A		
(81-91)	B		
(69-80)	C		
(55-68)	D		
(39-54)	E		
(21-38)	F		
(1-20)	G		
Not environmentally friendly - higher CO <sub>2</sub> emissions			
England & Wales		EU Directive 2002/91/EC	