



# SINCLAIR ROAD W14



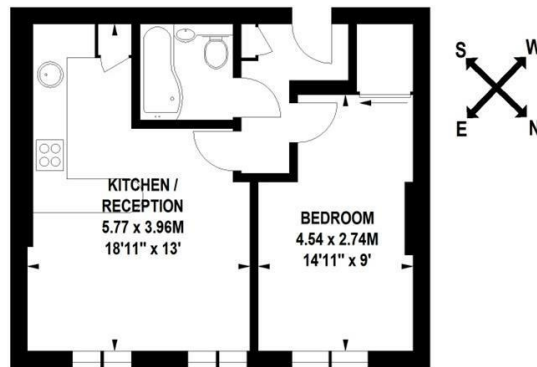


- 1 BEDROOM • OPEN PLAN RECEPTION • FITTED KITCHEN WITH BREAKFAST BAR • CONTEMPORARY BATHROOM • CLOSE TO TRANSPORT AT SHEPHERDS BUSH • FURNISHED • AVAILABLE 16TH JANUARY

Excellent 1 bedroom flat on the top floor of a Victorian conversion, with open plan reception, fitted kitchen with breakfast bar and contemporary bathroom. Located a short walk from the transport links at Shepherds Bush and Olympia. Available 16th January, furnished.

**Sinclair Road, W14**

**Approximate Gross Internal Area 39.5 sq m / 425 sq ft**



**Fourth Floor**

Floor Plan produced for Finlay Brewer by Mays Floorplans © . Tel 020 3397 4594  
 Illustration for identification purposes only, not to scale  
 All measurements are maximum, and include wardrobes and window bays where applicable  
 This Floorplan has been prepared in accordance with the current edition of the RICS code of measuring practice.

**138 Shepherds Bush Road, London, W6 7PB**  
**Tel: 020 7371 4071    [lettings@finlaybrewer.co.uk](mailto:lettings@finlaybrewer.co.uk)**