



## Charles Clowes Walk, Nine Elms, SW11

**£885 Per Week**

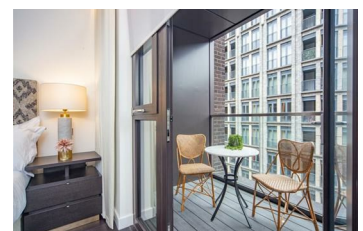
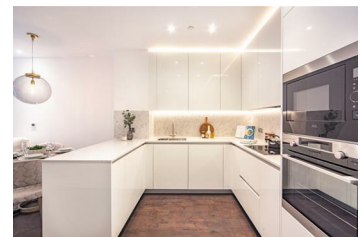
An impressive interior designed 886 sq ft two bedroom & two bathroom apartment located in Thornes House forming part of The Residence Collection in Nine Elms on London's iconic South Bank.

This luxury apartment is situated on the 5th floor of this prestigious building which features a 24-hour manned concierge along with a dedicated building manager, lift service, gym, media room, board room and bike storage.

The apartment comprises a spacious reception room complete with Samsung Smart TV's with Bose sound bars incorporating a built in Amazon Alexa to control the apartments lighting, TV and heating systems along with a private winter garden creating a further living area. The reception room is open plan with a fully fitted kitchen featuring integrated AEG appliances with floor to ceiling windows providing far reaching views across London. The apartment offers two double-bedrooms, two-bathrooms, one of which is an en-suite bathroom from the master bedroom. The apartment also benefits from ample storage space.

Thornes House is ideally positioned between two new Northern Line underground stations (set to open in 2020), adding to the extensive transport links including tree lined footpaths, dedicated cycle lanes, Clipper river service, local buses and the Pimlico bridge providing direct access into the neighbouring Royal Boroughs of Kensington and Chelsea.

- Luxury apartment
- Two bathrooms
- Lift access
- 24-Hour Emergency Helpline
- Bright reception with modern open plan kitchen
- Interior Designed / Winter Garden
- 24-Hour Concierge Service / On-Site Building Manager / CCTV
- Two double bedrooms
- Bike Storage
- On-site Gym / Cinema Media Room / Board Room



Energy Efficiency Rating		Environmental Impact (CO <sub>2</sub> ) Rating	
Current	Target	Current	Target
<p>Current: A Target: A</p>		<p>Current: B Target: B</p>	
<p>Not energy efficient: Higher heating costs</p>		<p>Not environmentally friendly: Higher CO<sub>2</sub> emissions</p>	
<p>England &amp; Wales 2008/10/EC</p>		<p>England &amp; Wales 2008/10/EC</p>	