



Merchant Square East, Paddington, W2

£990 Per Week

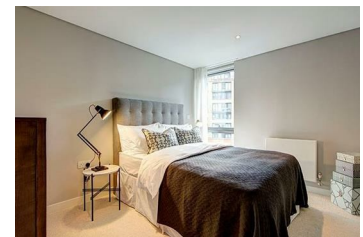
Stunning interior designed 3 bedrooms apartment, set within the heart of the Paddington Basin and close to the popular West End Quay.

The apartment is situated on the second floor of this prestigious building which features 24 hour concierge, lift service, and secure underground parking.

The stunning apartment comprises a beautiful reception room with superb views, a superb modern fitted open plan kitchen, three bedrooms, two bathrooms and ample storage space.

The apartment offers easy access to superb transport links such as Paddington Train Station (Bakerloo, Hammersmith & City, Circle, District lines and Heathrow) Edgware Road (Circle, District and Bakerloo lines).

- Prime location
- Three double bedrooms
- 24 hour concierge service
- Four minute walk from Edgware Road underground station
- Bright reception
- Two bathrooms
- Available Furnished or Unfurnished
- Modern fully fitted kitchen
- Lift access
- Close to Paddington station



Energy Efficiency Rating		Environmental Impact (CO ₂) Rating	
Current	Potential	Current	Potential
A	B	31	32
85	88		

England & Wales 2008/1/EC