



Park Road, NW8

£756 Per Week

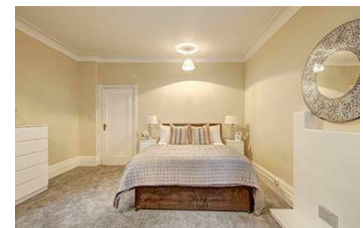
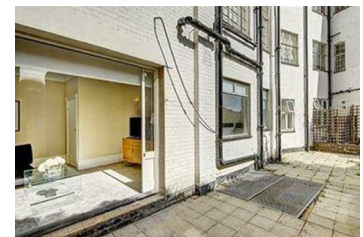
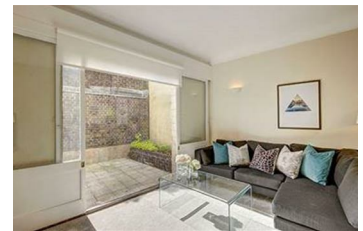
1st floor - 2 bedrooms - 924sq ft - 2 bathrooms
 £860 per week
 CCTV, Available furnished or unfurnished, Lifts, Porter, Video Entry
 Spacious two bedroom, two bathroom apartment set within a ported building located on one of NW8's most prestigious roads.

The apartment offers easy access to the famous Lords Cricket Ground, the open spaces of Regent's Park, along with all the local shops, bars, restaurants located on St John's Wood High Street.

Residential Land is the owner and managing agent of this property. Rent directly from us and pay no agency fees - just a one-off checkout charge. All of our tenants benefit from a dedicated on-site or building manager who is on hand to assist with any property related issues. We also employ a dedicated team of maintenance experts and provide a 24-hour emergency helpline.

Porter
 CCTV
 Lifts

- Bright reception
- Two bathrooms
- Modern open plan kitchen
- Interior Designed / Winter Garden
- Two double bedrooms
- On-site Gym / Cinema Media Room / Board Room
- Underground Secure Parking / Bike Storage
- 24-Hour Concierge Service / On-Site Building Manager / CCTV
- Lift Service
- 24-Hour Emergency Helpline



| Energy Efficiency Rating | | Environmental Impact (CO ₂) Rating | |
|----------------------------------|---------------------------------|--|-------------------------------|
| Current | Potential | Current | Potential |
| 100 kWh/m ² /year (A) | 35 kWh/m ² /year (D) | 100 g/m ² /year (A) | 35 g/m ² /year (D) |
| 45 kWh/m ² /year (B) | 15 kWh/m ² /year (E) | 45 g/m ² /year (B) | 15 g/m ² /year (E) |
| 15 kWh/m ² /year (C) | 5 kWh/m ² /year (F) | 15 g/m ² /year (C) | 5 g/m ² /year (F) |
| 5 kWh/m ² /year (D) | 2 kWh/m ² /year (G) | 5 g/m ² /year (D) | 2 g/m ² /year (G) |
| 1 kWh/m ² /year (E) | 0 kWh/m ² /year (H) | 1 g/m ² /year (E) | 0 g/m ² /year (H) |
| 0 kWh/m ² /year (F) | 0 kWh/m ² /year (I) | 0 g/m ² /year (F) | 0 g/m ² /year (I) |
| 0 kWh/m ² /year (G) | 0 kWh/m ² /year (J) | 0 g/m ² /year (G) | 0 g/m ² /year (J) |
| 0 kWh/m ² /year (H) | 0 kWh/m ² /year (K) | 0 g/m ² /year (H) | 0 g/m ² /year (K) |
| 0 kWh/m ² /year (I) | 0 kWh/m ² /year (L) | 0 g/m ² /year (I) | 0 g/m ² /year (L) |
| 0 kWh/m ² /year (J) | 0 kWh/m ² /year (M) | 0 g/m ² /year (J) | 0 g/m ² /year (M) |
| 0 kWh/m ² /year (K) | 0 kWh/m ² /year (N) | 0 g/m ² /year (K) | 0 g/m ² /year (N) |
| 0 kWh/m ² /year (L) | 0 kWh/m ² /year (O) | 0 g/m ² /year (L) | 0 g/m ² /year (O) |
| 0 kWh/m ² /year (M) | 0 kWh/m ² /year (P) | 0 g/m ² /year (M) | 0 g/m ² /year (P) |
| 0 kWh/m ² /year (N) | 0 kWh/m ² /year (Q) | 0 g/m ² /year (N) | 0 g/m ² /year (Q) |
| 0 kWh/m ² /year (O) | 0 kWh/m ² /year (R) | 0 g/m ² /year (O) | 0 g/m ² /year (R) |
| 0 kWh/m ² /year (P) | 0 kWh/m ² /year (S) | 0 g/m ² /year (P) | 0 g/m ² /year (S) |
| 0 kWh/m ² /year (Q) | 0 kWh/m ² /year (T) | 0 g/m ² /year (Q) | 0 g/m ² /year (T) |
| 0 kWh/m ² /year (R) | 0 kWh/m ² /year (U) | 0 g/m ² /year (R) | 0 g/m ² /year (U) |
| 0 kWh/m ² /year (S) | 0 kWh/m ² /year (V) | 0 g/m ² /year (S) | 0 g/m ² /year (V) |
| 0 kWh/m ² /year (T) | 0 kWh/m ² /year (W) | 0 g/m ² /year (T) | 0 g/m ² /year (W) |
| 0 kWh/m ² /year (U) | 0 kWh/m ² /year (X) | 0 g/m ² /year (U) | 0 g/m ² /year (X) |
| 0 kWh/m ² /year (V) | 0 kWh/m ² /year (Y) | 0 g/m ² /year (V) | 0 g/m ² /year (Y) |
| 0 kWh/m ² /year (W) | 0 kWh/m ² /year (Z) | 0 g/m ² /year (W) | 0 g/m ² /year (Z) |
| 0 kWh/m ² /year (X) | 0 kWh/m ² /year (AA) | 0 g/m ² /year (X) | 0 g/m ² /year (AA) |
| 0 kWh/m ² /year (Y) | 0 kWh/m ² /year (AB) | 0 g/m ² /year (Y) | 0 g/m ² /year (AB) |
| 0 kWh/m ² /year (Z) | 0 kWh/m ² /year (AC) | 0 g/m ² /year (Z) | 0 g/m ² /year (AC) |
| 0 kWh/m ² /year (AA) | 0 kWh/m ² /year (AD) | 0 g/m ² /year (AA) | 0 g/m ² /year (AD) |
| 0 kWh/m ² /year (AB) | 0 kWh/m ² /year (AE) | 0 g/m ² /year (AB) | 0 g/m ² /year (AE) |
| 0 kWh/m ² /year (AC) | 0 kWh/m ² /year (AF) | 0 g/m ² /year (AC) | 0 g/m ² /year (AF) |
| 0 kWh/m ² /year (AD) | 0 kWh/m ² /year (AG) | 0 g/m ² /year (AD) | 0 g/m ² /year (AG) |
| 0 kWh/m ² /year (AE) | 0 kWh/m ² /year (AH) | 0 g/m ² /year (AE) | 0 g/m ² /year (AH) |
| 0 kWh/m ² /year (AF) | 0 kWh/m ² /year (AI) | 0 g/m ² /year (AF) | 0 g/m ² /year (AI) |
| 0 kWh/m ² /year (AG) | 0 kWh/m ² /year (AJ) | 0 g/m ² /year (AG) | 0 g/m ² /year (AJ) |
| 0 kWh/m ² /year (AH) | 0 kWh/m ² /year (AK) | 0 g/m ² /year (AH) | 0 g/m ² /year (AK) |
| 0 kWh/m ² /year (AI) | 0 kWh/m ² /year (AL) | 0 g/m ² /year (AI) | 0 g/m ² /year (AL) |
| 0 kWh/m ² /year (AJ) | 0 kWh/m ² /year (AM) | 0 g/m ² /year (AJ) | 0 g/m ² /year (AM) |
| 0 kWh/m ² /year (AK) | 0 kWh/m ² /year (AN) | 0 g/m ² /year (AK) | 0 g/m ² /year (AN) |
| 0 kWh/m ² /year (AL) | 0 kWh/m ² /year (AO) | 0 g/m ² /year (AL) | 0 g/m ² /year (AO) |
| 0 kWh/m ² /year (AM) | 0 kWh/m ² /year (AP) | 0 g/m ² /year (AM) | 0 g/m ² /year (AP) |
| 0 kWh/m ² /year (AN) | 0 kWh/m ² /year (AQ) | 0 g/m ² /year (AN) | 0 g/m ² /year (AQ) |
| 0 kWh/m ² /year (AO) | 0 kWh/m ² /year (AR) | 0 g/m ² /year (AO) | 0 g/m ² /year (AR) |
| 0 kWh/m ² /year (AP) | 0 kWh/m ² /year (AS) | 0 g/m ² /year (AP) | 0 g/m ² /year (AS) |
| 0 kWh/m ² /year (AQ) | 0 kWh/m ² /year (AT) | 0 g/m ² /year (AQ) | 0 g/m ² /year (AT) |
| 0 kWh/m ² /year (AR) | 0 kWh/m ² /year (AU) | 0 g/m ² /year (AR) | 0 g/m ² /year (AU) |
| 0 kWh/m ² /year (AS) | 0 kWh/m ² /year (AV) | 0 g/m ² /year (AS) | 0 g/m ² /year (AV) |
| 0 kWh/m ² /year (AT) | 0 kWh/m ² /year (AW) | 0 g/m ² /year (AT) | 0 g/m ² /year (AW) |
| 0 kWh/m ² /year (AU) | 0 kWh/m ² /year (AX) | 0 g/m ² /year (AU) | 0 g/m ² /year (AX) |
| 0 kWh/m ² /year (AV) | 0 kWh/m ² /year (AY) | 0 g/m ² /year (AV) | 0 g/m ² /year (AY) |
| 0 kWh/m ² /year (AW) | 0 kWh/m ² /year (AZ) | 0 g/m ² /year (AW) | 0 g/m ² /year (AZ) |
| 0 kWh/m ² /year (AX) | 0 kWh/m ² /year (BA) | 0 g/m ² /year (AX) | 0 g/m ² /year (BA) |
| 0 kWh/m ² /year (AY) | 0 kWh/m ² /year (BB) | 0 g/m ² /year (AY) | 0 g/m ² /year (BB) |
| 0 kWh/m ² /year (AZ) | 0 kWh/m ² /year (BC) | 0 g/m ² /year (AZ) | 0 g/m ² /year (BC) |
| 0 kWh/m ² /year (BA) | 0 kWh/m ² /year (BD) | 0 g/m ² /year (BA) | 0 g/m ² /year (BD) |
| 0 kWh/m ² /year (BB) | 0 kWh/m ² /year (BE) | 0 g/m ² /year (BB) | 0 g/m ² /year (BE) |
| 0 kWh/m ² /year (BC) | 0 kWh/m ² /year (BF) | 0 g/m ² /year (BC) | 0 g/m ² /year (BF) |
| 0 kWh/m ² /year (BD) | 0 kWh/m ² /year (BG) | 0 g/m ² /year (BD) | 0 g/m ² /year (BG) |
| 0 kWh/m ² /year (BE) | 0 kWh/m ² /year (BH) | 0 g/m ² /year (BE) | 0 g/m ² /year (BH) |
| 0 kWh/m ² /year (BF) | 0 kWh/m ² /year (BI) | 0 g/m ² /year (BF) | 0 g/m ² /year (BI) |
| 0 kWh/m ² /year (BG) | 0 kWh/m ² /year (BJ) | 0 g/m ² /year (BG) | 0 g/m ² /year (BJ) |
| 0 kWh/m ² /year (BH) | 0 kWh/m ² /year (BK) | 0 g/m ² /year (BH) | 0 g/m ² /year (BK) |
| 0 kWh/m ² /year (BI) | 0 kWh/m ² /year (BL) | 0 g/m ² /year (BI) | 0 g/m ² /year (BL) |
| 0 kWh/m ² /year (BJ) | 0 kWh/m ² /year (BM) | 0 g/m ² /year (BJ) | 0 g/m ² /year (BM) |
| 0 kWh/m ² /year (BK) | 0 kWh/m ² /year (BN) | 0 g/m ² /year (BK) | 0 g/m ² /year (BN) |
| 0 kWh/m ² /year (BL) | 0 kWh/m ² /year (BO) | 0 g/m ² /year (BL) | 0 g/m ² /year (BO) |
| 0 kWh/m ² /year (BM) | 0 kWh/m ² /year (BP) | 0 g/m ² /year (BM) | 0 g/m ² /year (BP) |
| 0 kWh/m ² /year (BN) | 0 kWh/m ² /year (BQ) | 0 g/m ² /year (BN) | 0 g/m ² /year (BQ) |
| 0 kWh/m ² /year (BO) | 0 kWh/m ² /year (BR) | 0 g/m ² /year (BO) | 0 g/m ² /year (BR) |
| 0 kWh/m ² /year (BP) | 0 kWh/m ² /year (BS) | 0 g/m ² /year (BP) | 0 g/m ² /year (BS) |
| 0 kWh/m ² /year (BQ) | 0 kWh/m ² /year (BT) | 0 g/m ² /year (BQ) | 0 g/m ² /year (BT) |
| 0 kWh/m ² /year (BR) | 0 kWh/m ² /year (BU) | 0 g/m ² /year (BR) | 0 g/m ² /year (BU) |
| 0 kWh/m ² /year (BS) | 0 kWh/m ² /year (BV) | 0 g/m ² /year (BS) | 0 g/m ² /year (BV) |
| 0 kWh/m ² /year (BT) | 0 kWh/m ² /year (BW) | 0 g/m ² /year (BT) | 0 g/m ² /year (BW) |
| 0 kWh/m ² /year (BU) | 0 kWh/m ² /year (BX) | 0 g/m ² /year (BU) | 0 g/m ² /year (BX) |
| 0 kWh/m ² /year (BV) | 0 kWh/m ² /year (BY) | 0 g/m ² /year (BV) | 0 g/m ² /year (BY) |
| 0 kWh/m ² /year (BW) | 0 kWh/m ² /year (BZ) | 0 g/m ² /year (BW) | 0 g/m ² /year (BZ) |
| 0 kWh/m ² /year (BX) | 0 kWh/m ² /year (CA) | 0 g/m ² /year (BX) | 0 g/m ² /year (CA) |
| 0 kWh/m ² /year (BY) | 0 kWh/m ² /year (CB) | 0 g/m ² /year (BY) | 0 g/m ² /year (CB) |
| 0 kWh/m ² /year (BZ) | 0 kWh/m ² /year (CC) | 0 g/m ² /year (BZ) | 0 g/m ² /year (CC) |
| 0 kWh/m ² /year (CA) | 0 kWh/m ² /year (CD) | 0 g/m ² /year (CA) | 0 g/m ² /year (CD) |
| 0 kWh/m ² /year (CB) | 0 kWh/m ² /year (CE) | 0 g/m ² /year (CB) | 0 g/m ² /year (CE) |
| 0 kWh/m ² /year (CC) | 0 kWh/m ² /year (CF) | 0 g/m ² /year (CC) | 0 g/m ² /year (CF) |
| 0 kWh/m ² /year (CD) | 0 kWh/m ² /year (CG) | 0 g/m ² /year (CD) | 0 g/m ² /year (CG) |
| 0 kWh/m ² /year (CE) | 0 kWh/m ² /year (CH) | 0 g/m ² /year (CE) | 0 g/m ² /year (CH) |
| 0 kWh/m ² /year (CF) | 0 kWh/m ² /year (CI) | 0 g/m ² /year (CF) | 0 g/m ² /year (CI) |
| 0 kWh/m ² /year (CG) | 0 kWh/m ² /year (CJ) | 0 g/m ² /year (CG) | 0 g/m ² /year (CJ) |
| 0 kWh/m ² /year (CH) | 0 kWh/m ² /year (CK) | 0 g/m ² /year (CH) | 0 g/m ² /year (CK) |
| 0 kWh/m ² /year (CI) | 0 kWh/m ² /year (CL) | 0 g/m ² /year (CI) | 0 g/m ² /year (CL) |
| 0 kWh/m ² /year (CJ) | 0 kWh/m ² /year (CM) | 0 g/m ² /year (CJ) | 0 g/m ² /year (CM) |
| 0 kWh/m ² /year (CK) | 0 kWh/m ² /year (CN) | 0 g/m ² /year (CK) | 0 g/m ² /year (CN) |
| 0 kWh/m ² /year (CL) | 0 kWh/m ² /year (CO) | 0 g/m ² /year (CL) | 0 g/m ² /year (CO) |
| 0 kWh/m ² /year (CM) | 0 kWh/m ² /year (CP) | 0 g/m ² /year (CM) | 0 g/m ² /year (CP) |
| 0 kWh/m ² /year (CN) | 0 kWh/m ² /year (CQ) | 0 g/m ² /year (CN) | 0 g/m ² /year (CQ) |
| 0 kWh/m ² /year (CO) | 0 kWh/m ² /year (CR) | 0 g/m ² /year (CO) | 0 g/m ² /year (CR) |
| 0 kWh/m ² /year (CP) | 0 kWh/m ² /year (CS) | 0 g/m ² /year (CP) | 0 g/m ² /year (CS) |
| 0 kWh/m ² /year (CQ) | 0 kWh/m ² /year (CT) | 0 g/m ² /year (CQ) | 0 g/m ² /year (CT) |
| 0 kWh/m ² /year (CR) | 0 kWh/m ² /year (CU) | 0 g/m ² /year (CR) | 0 g/m ² /year (CU) |
| 0 kWh/m ² /year (CS) | 0 kWh/m ² /year (CV) | 0 g/m ² /year (CS) | 0 g/m ² /year (CV) |
| 0 kWh/m ² /year (CT) | 0 kWh/m ² /year (CW) | 0 g/m ² /year (CT) | 0 g/m ² /year (CW) |
| 0 kWh/m ² /year (CU) | 0 kWh/m ² /year (CX) | 0 g/m ² /year (CU) | 0 g/m ² /year (CX) |
| 0 kWh/m ² /year (CV) | 0 kWh/m ² /year (CY) | 0 g/m ² /year (CV) | 0 g/m ² /year (CY) |
| 0 kWh/m ² /year (CW) | 0 kWh/m ² /year (CZ) | 0 g/m ² /year (CW) | 0 g/m ² /year (CZ) |
| 0 kWh/m ² /year (CX) | 0 kWh/m ² /year (DA) | 0 g/m ² /year (CX) | 0 g/m ² /year (DA) |
| 0 kWh/m ² /year (CY) | 0 kWh/m ² /year (DB) | 0 g/m ² /year (CY) | 0 g/m ² /year (DB) |
| 0 kWh/m ² /year (CZ) | 0 kWh/m ² /year (DC) | 0 g/m ² /year (CZ) | 0 g/m ² /year (DC) |
| 0 kWh/m ² /year (DA) | 0 kWh/m ² /year (DD) | 0 g/m ² /year (DA) | 0 g/m ² /year (DD) |
| 0 kWh/m ² /year (DB) | 0 kWh/m ² /year (DE) | 0 g/m ² /year (DB) | 0 g/m ² /year (DE) |
| 0 kWh/m ² /year (DC) | 0 kWh/m ² /year (DF) | 0 g/m ² /year (DC) | 0 g/m ² /year (DF) |
| 0 kWh/m ² /year (DD) | 0 kWh/m ² /year (DG) | 0 g/m ² /year (DD) | 0 g/m ² /year (DG) |
| 0 kWh/m ² /year (DE) | 0 kWh/m ² /year (DH) | 0 g/m ² /year (DE) | 0 g/m ² /year (DH) |
| 0 kWh/m ² /year (DF) | 0 kWh/m ² /year (DI) | 0 g/m ² /year (DF) | 0 g/m ² /year (DI) |
| 0 kWh/m ² /year (DG) | 0 kWh/m ² /year (DJ) | 0 g/m ² /year (DG) | 0 g/m ² /year (DJ) |
| 0 kWh/m ² /year (DH) | 0 kWh/m ² /year (DK) | 0 g/m ² /year (DH) | 0 g/m ² /year (DK) |
| 0 kWh/m ² /year (DI) | 0 kWh/m ² /year (DL) | 0 g/m ² /year (DI) | 0 g/m ² /year (DL) |
| 0 kWh/m ² /year (DJ) | 0 kWh/m ² /year (DM) | 0 g/m ² /year (DJ) | 0 g/m ² /year (DM) |
| 0 kWh/m ² /year (DK) | 0 kWh/m ² /year (DN) | 0 g/m ² /year (DK) | 0 g/m ² /year (DN) |
| 0 kWh/m ² /year (DL) | 0 kWh/m ² /year (DO) | 0 g/m ² /year (DL) | 0 g/m ² /year (DO) |
| 0 kWh/m ² /year (DM) | 0 kWh/m ² /year (DP) | 0 g/m ² /year (DM) | 0 g/m ² /year (DP) |
| 0 kWh/m ² /year (DN) | 0 kWh/m ² /year (DQ) | 0 g/m ² /year (DN) | 0 g/m ² /year (DQ) |
| 0 kWh/m ² /year (DO) | 0 kWh/m ² /year (DR) | 0 g/m ² /year (DO) | 0 g/m ² /year (DR) |
| 0 kWh/m ² /year (DP) | 0 kWh/m ² /year (DS) | 0 g/m ² /year (DP) | 0 g/m ² /year (DS) |
| 0 kWh/m ² /year (DQ) | 0 kWh/m ² /year (DT) | 0 g/m ² /year (DQ) | 0 g/m ² /year (DT) |
| 0 kWh/m ² /year (DR) | 0 kWh/m ² /year (DU) | 0 g/m ² /year (DR) | 0 g/m ² /year (DU) |
| 0 kWh/m ² /year (DS) | 0 kWh/m ² /year (DV) | 0 g/m ² /year (DS) | 0 g/m ² /year (DV) |
| 0 kWh/m ² /year (DT) | 0 kWh/m ² /year (DW) | 0 g/m ² /year (DT) | 0 g/m ² /year (DW) |
| 0 kWh/m ² /year (DU) | 0 kWh/m ² /year (DX) | 0 g/m ² /year (DU) | 0 g/m ² /year (DX) |
| 0 kWh/m ² /year (DV) | 0 kWh/m ² /year (DY) | 0 g/m ² /year (DV) | 0 g/m ² /year (DY) |
| 0 kWh/m ² /year (DW) | 0 kWh/m ² /year (DZ) | 0 g/m ² /year (DW) | 0 g/m ² /year (DZ) |
| 0 kWh/m ² /year (DX) | 0 kWh/m ² /year (EA) | 0 g/m ² /year (DX) | 0 g/m ² /year (EA) |
| 0 kWh/m ² /year (DY) | 0 kWh/m ² /year (EB) | 0 g/m ² /year (DY) | 0 g/m ² /year (EB) |
| 0 kWh/m ² /year (DZ) | 0 kWh/m ² /year (EC) | 0 g/m ² /year (DZ) | 0 g/m ² /year (EC) |
| 0 kWh/m ² /year (EA) | 0 kWh/m ² /year (ED) | 0 g/m ² /year (EA) | 0 g/m ² /year (ED) |
| 0 kWh/m ² /year (EB) | 0 kWh/m ² /year (EE) | 0 g/m ² /year (EB) | 0 g/m ² /year (EE) |
| 0 kWh/m ² /year (EC) | 0 kWh/m ² /year (EF) | 0 g/m ² /year (EC) | 0 g/m ² /year (EF) |
| 0 kWh/m ² /year (ED) | 0 kWh/m ² /year (EG) | 0 g/m ² /year (ED) | 0 g/m ² /year (EG) |
| 0 kWh/m ² /year (EE) | 0 kWh/m ² /year (EH) | 0 g/m ² /year (EE) | 0 g/m ² /year (EH) |
| 0 kWh/m ² /year (EF) | 0 kWh/m ² /year (EI) | 0 g/m ^{2</} | |