

Red Lion Lane, Shooters Hill

1 bed(s) 1 bath(s) 1 reception(s)

**Beaumont
Gibbs**
beaumontgibbs.com

134 - 136 Plumstead Common Road



Plumstead

London

SE18 2UL

£215,000 Leasehold





* SEE VIDEO WALKTHROUGH TOUR * LOVELY ONE BEDROOMED GROUND FLOOR FLAT * ELECTRIC HEATING * ALLOCATED CAR PARKING SPACE * SHOWER ROOM * PERFECT BUY TO LET OR FIRST TIME BUY * CALL US TO ARRANGE A VIEWING * SHORT WALK FROM WOOLWICH COMMON *

Situated very closeby to Woolwich Common, Beaumont Gibbs are offering this lovely one bedroomed ground floor flat for sale. The flat is also located opposite the historic Royal Military Academy site, with local bus routes and shops on hand. Woolwich town centre with its DLR, mainline station and forthcoming Crossrail link are approximately one mile distance away. Great value for money and with low heating costs, this would make a great purchase.

Room Measurements

'L' Shaped Lounge 15'7 X 13' Reducing to 6'3 (4.75m x 3.96m Reducing to 1.91m)

Kitchen 7'6 x 5'9 (2.29m x 1.75m)

Bedroom 10'7 x 9' (3.23m x 2.74m)

Shower Room 7' Into enclosure x 5'6 (2.13m x 1.68m)

Lease

The balance of a 125 year lease, created on the 1st July 1986.

Service Charge

£1,659 per annum. Including Ground Rent. To be confirmed by the Vendor's solicitor / conveyancer.

Ground Rent

See notes under Service Charge.

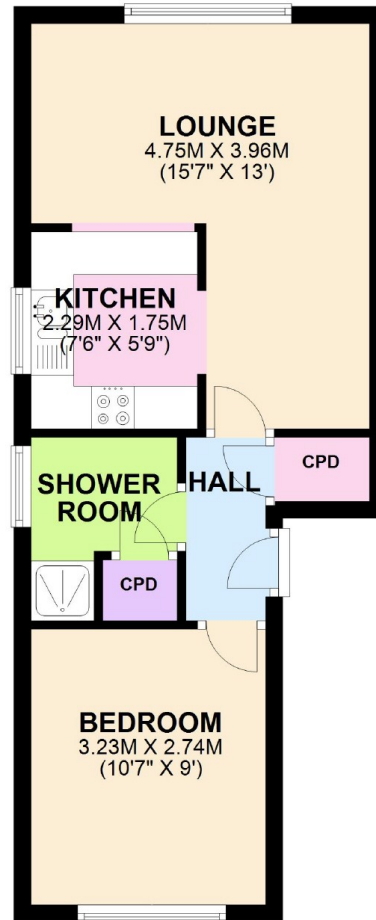
Council Tax

Royal Borough of Greenwich - Band C - £1,375.77 per annum.



GROUND FLOOR

APPROX. 34.7 SQ. METRES (373.1 SQ. FEET)



TOTAL AREA: APPROX. 34.7 SQ. METRES (373.1 SQ. FEET)

AWAITING
EPC

It is not known whether the fixtures and the fittings to be included in the disposal of this property are operational and effective, as the agents have not tested them. Measurements have been taken using a 'Disto life' laser measure. Floor plans (where applicable) should only be used as a rough guide. The accuracy of the floor plans and measurements as well as the content of the property details CANNOT be relied upon.

020 8319 7600

134 - 136 Plumstead Common Road, Plumstead, London SE18 2UL

