



Forest Drive, Epping, CM16

BUTLER & STAG



## A two double bedroom apartment situated on the ground floor of this secure modern development, in the heart of Theydon Bois village.



- Two Double Bedrooms
- Gated Off Street Parking Space
- Private Courtyard Garden
- Central Village Location
- Available Now
- Two Bathrooms

One of only two properties accessed via a secure street entrance door, the apartment is ideal for working professionals for its convenient access to Theydon Bois Station (Central Line) or older tenants wanting a ground floor apartment with private outside space and many amenities close by.

Accommodation comprises, large living room with access to a private courtyard garden, fitted kitchen, two double bedrooms, master with an end-suite shower room, main bathroom and a gated off street parking space.

Available now, unfurnished.

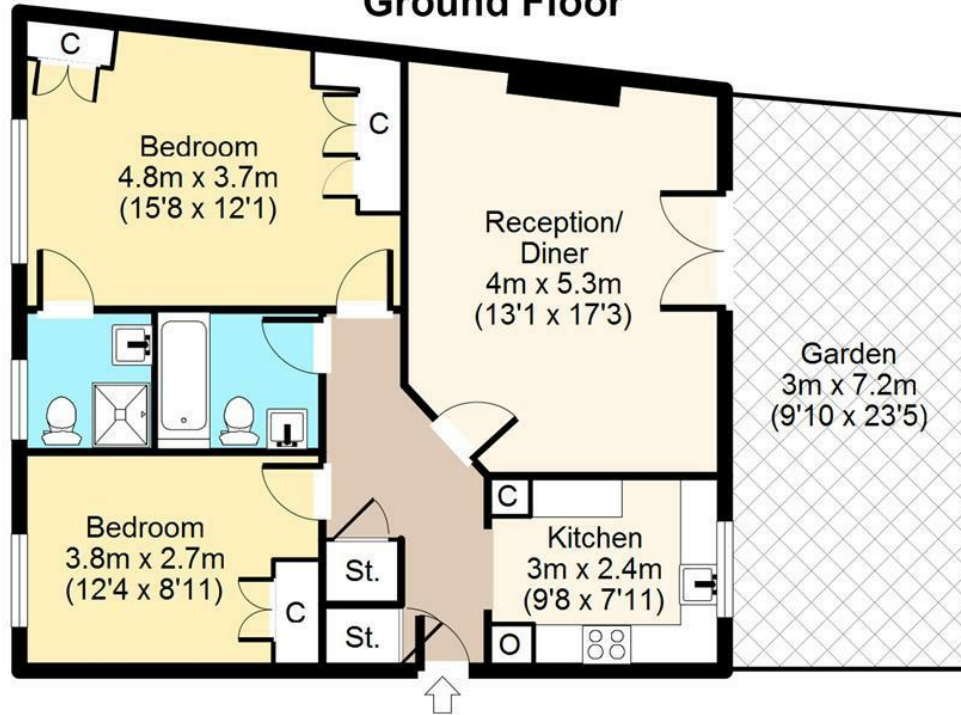




# Forest Dr. CM16



## Ground Floor



Total area: approx. 68 sq. metres (728 sq. feet)  
For illustration purposes only - not to scale

IMPORTANT NOTICE - These particulars have been prepared in good faith and they are not intended to constitute part of an offer or contract. We have not performed a structural survey on this property and the services, appliances and specific fittings have not been tested. All photographs, measurements, floor plans and distances referred to are given as a guide and should not be relied upon.

# BUTLER & STAG

☎ 01992 667666

🏠 4 Forest Drive, Theydon Bois, Essex, CM16 7EY

✉ [theydon@butlerandstag.com](mailto:theydon@butlerandstag.com)

[www.butlerandstag.uk](http://www.butlerandstag.uk)