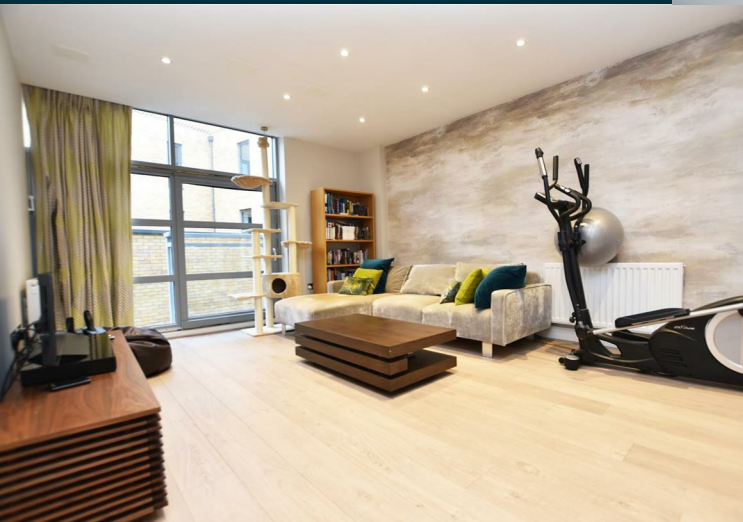


**Railshead Road
Old Isleworth
TW7 7BY**

Offers In Excess Of £500,000

ChaseBuchanan





- Viewings accompanied by Chase Buchanan
- Two double bedrooms
- Lift serviced
- Secure gated parking
- Stunning riverside development
- Two bathrooms
- Over 800 sq.ft
- Close to Richmond

A simply stunning luxury apartment on the banks of the River Thames, located on the Old Isleworth/St Margarets border in the London Borough of Richmond.

Finished to the highest of standards this property is located on the first floor and comprises an open plan living room with a modern kitchen and Juliet balcony, master bedroom with an en-suite shower room, second double bedroom and a modern bathroom suite. Further benefits include double glazed windows, gas central heating, an allocated parking space, a spacious storage cupboard and ample cycle storage.

Railshead Road is along the towpath with St Margarets train station and Richmond rail and underground station about a mile away. The M3 and M4 road links are within easy reach, connecting to the M25 and the A4 to Central London. Richmond offers extensive and sophisticated facilities and the station combines a fast and frequent main line service to London Waterloo and the District line tube.

For more information or to book a viewing, please contact:

020 8758 1755

ChaseBuchanan

7 Odeon Parade, 480 London Road, Isleworth, Middlesex, TW7 4DE

Energy Efficiency Rating	Current	Desired
Very energy efficient - lower running costs 82-92 (A)	82	82
72-81 (B)		
62-71 (C)		
52-61 (D)		
42-51 (E)		
32-41 (F)		
22-31 (G)		

Environmental Impact (CO ₂) Rating	Current	Desired
Very environmentally friendly - lower CO ₂ emissions 10-15 (A)		
16-20 (B)		
21-25 (C)		
26-30 (D)		
31-35 (E)		
36-40 (F)		
41-45 (G)		

Care has been taken in the preparation of these particulars, however, their accuracy is not guaranteed and they do not form part of any contract. Measurements stated must be considered maximum.