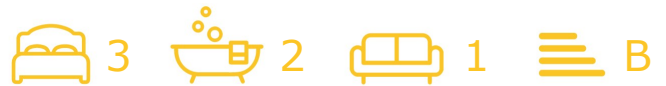




39 Schofield Street

, Oldham, OL8 1QJ

Offers Over £160,000



VIRTUAL TOURSUPERBLY PRESENTED***FAMILY HOME*** Cousins Estate Agents are pleased to present this MODERN THREE BEDROOM SEMI DETACHED FREEHOLD HOUSE built circa 2011, centrally located in popular Hathershaw and conveniently placed for access to schools, shops and transport links.

Internally the property is finished to a modern and high standard and an early inspection is highly recommended. The ground floor comprises; entrance hallway, kitchen, spacious lounge/diner with windows and french doors, a downstairs WC and a useful under-stairs storage cupboard. Stairs lead up to a first floor landing which opens to three good sized bedrooms and family bathroom.

The property benefits from gas central heating, uPVC double glazing and is also fully alarmed.

Externally are well kept gardens to the front and rear along with designated parking to the side.



Entrance hallway 12'1"*5'2" (3.7*1.6)

Composite front door with chrome door furniture. Wood finish floor. Doors to WC, Kitchen and living room. Stairs to first floor

Downstairs WC 5'10"*4'1" (1.8*1.268)

uPVC window. White toilet and sink. Wood finish floor

Kitchen 12'1"*7'3" (3.7*2.23)

Wood finish lower and upper units. Contrasting worktops. Tiled splashback. Integrated oven with 5 ring gas hob. Corner boiler. Spotlights. uPVC front facing window with blinds.

Lounge/Diner 17'0"*15'5" (5.184*4.72)

uPVC French doors with side windows leading to rear garden. Carpet. Pendant light fitting. Understairs storage access

Family Bathroom 8'2"*7'1" (2.5*2.16)

Three piece white bathroom suite with glass shower screen. Wood finish flooring. uPVC side window. Wall mirror. Chrome towel radiator. Spotlights

Front Bedroom 15'6"*9'3" (4.73*2.83)

uPVC front facing windows with blinds and curtains. Storage cupboard. Carpet. Radiator. Pendant light fitting

Back Bedroom 13'10"*8'3" (4.22*2.517)

uPVC rear facing windows with blinds and curtains. Carpet. Radiator. Pendant light fitting

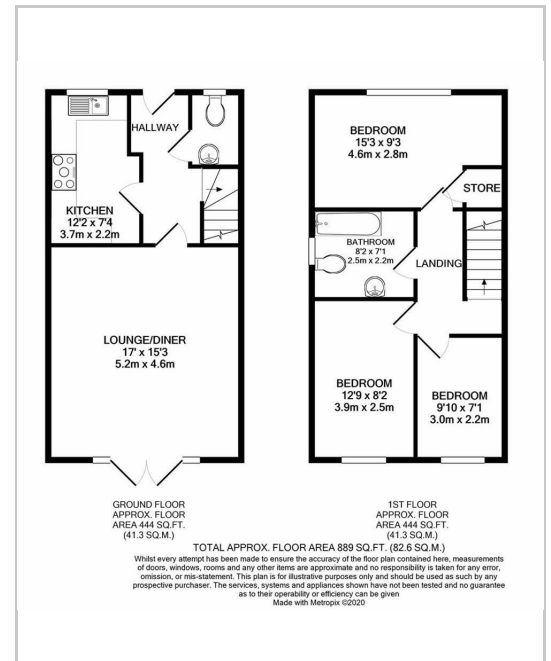
Bedroom 3 9'10"*6'6" (3*2)

uPVC rear window with blinds. Carpet. Radiator. Pendant light fitting

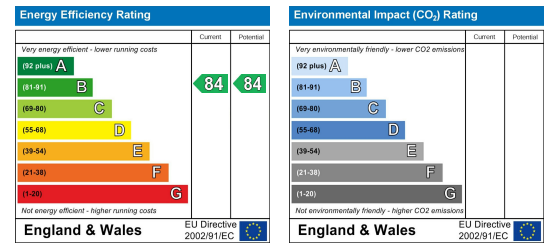
Area Map



Floor Plans



Energy Efficiency Graph



These particulars, whilst believed to be accurate are set out as a general outline only for guidance and do not constitute any part of an offer or contract. Intending purchasers should not rely on them as statements of representation of fact, but must satisfy themselves by inspection or otherwise as to their accuracy. No person in this firm's employment has the authority to make or give any representation or warranty in respect of the property.

