



Ongar Road

Abridge, Romford, RM4 1UE

Asking Price Of £325,000

Two Bedrooms - One Bathroom - First Floor Apartment
- Spacious Modern Kitchen/Dining Area - Large Lounge
Area - Close To Local Amenities - Off Street Parking -
Village Location



Property Features

- Two Bedrooms
- One Bathroom
- First Floor Apartment
- Spacious Modern Kitchen/Dining Area
- Large Open Lounge Area
- Close To Local Amenities
- Off Street Parking
- Village Location
-
-

Full Description

Two Bedrooms - One Bathroom - First Floor Apartment - Spacious Modern Kitchen/Dining Area - Large Lounge Area - Close To Local Amenities - Off Street Parking - Village Location

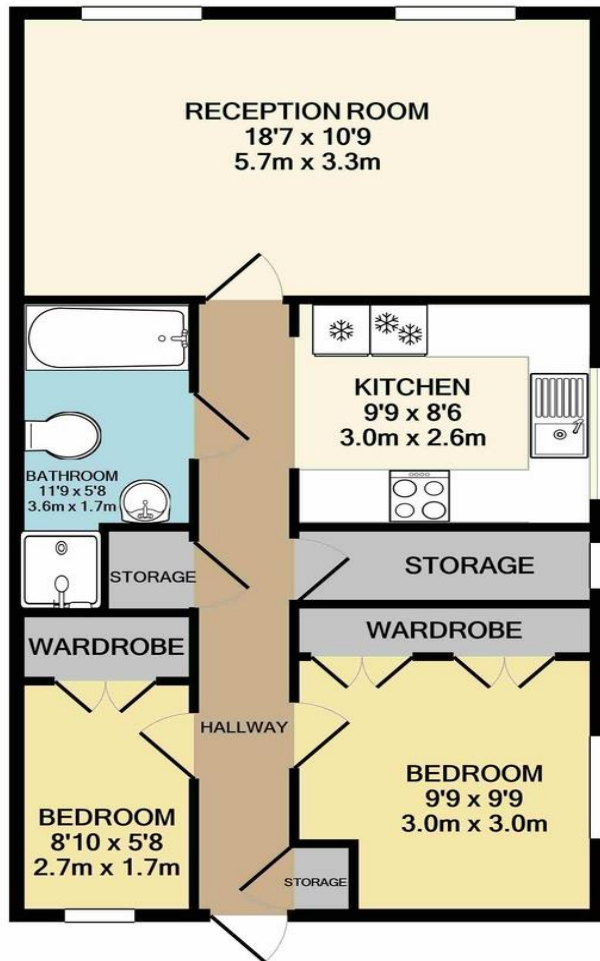
A well presented two bedroom apartment located on the first floor within a modern block which is close to nearby stations such as Theydon Bois, Chigwell and Epping London Underground Central Line Stations.

Guide Price £300,000-325,000









RM4 1UE

TOTAL APPROX. FLOOR AREA 630 SQ.FT. (58.5 SQ.M.)

attempt has been made to ensure the accuracy of the floor plan contained here
rooms and any other items are approximate and no responsibility is taken
for mis-statement. This plan is for illustrative purposes only and should be used as a guide
purchaser. The services, systems and appliances shown have not been tested and
as to their operability or efficiency can be given
Made with Metropix ©2020

142 High Street
Ongar
Essex
CM5 9JH

www.durdenandhunt.co.uk
0203 026 0160
sales@durdenandhunt.co.uk

Agents Note: Whilst every care has been taken to prepare these particulars, they are for guidance purposes only. All measurements are approximate and for general guidance purposes only and whilst every care has been taken to ensure their accuracy, they should not be relied upon and potential buyers/tenants are advised to recheck the measurements

| Score | Energy rating | Current | Potential |
|-------|---------------|---------|-----------|
| 92+ | A | | |
| 81-91 | B | | |
| 69-80 | C | 72 c | 77 c |
| 55-68 | D | | |
| 39-54 | E | | |
| 21-38 | F | | |
| 1-20 | G | | |