



21 Ashdown Court, Cromer, NR27 0AE

Guide Price £185,000

- Two bedroom first floor apartment
- Residents lounge
- Laundry room
- EPC Rating: TBC

This lovely floor flat consists of two bedrooms, lounge- diner and fitted kitchen and bathroom. The apartments and building have been specifically designed and built for the over 55's offering communal facilities which include a residents lounge with kitchen, laundry, hairdressing salon, guest suites, landscaped grounds, private parking, guest parking, on site manager available 9-5 weekdays, alarm/ intercom facility in each apartment linked to a central monitoring system and lift access to all floors



Property Description

OVERVIEW

This first floor purpose built over 55s apartment lies in a sought after area of the beautiful seaside town of Cromer. This delightful apartment is within easy reach of the beaches, town centre and all its amenities along with the doctors and transport links. The apartment consists of a spacious hallway with doors to the lounge- diner along with fully fitted kitchen, two double bedrooms and bathroom.

HALLWAY

Door to the front, large built in large cupboard, airing cupboard carpets and doors off to the lounge, kitchen, bedrooms and bathroom

LOUNGE/DINER

Light and airy lounge with carpets, fireplace with fire, double glazed window to the side and rear along with double glazed door with Juliette balcony. Archway leading from the lounge to the fitted kitchen

KITCHEN

Double glazed window to the side, fitted kitchen with wall and base units, sink drainer, part tiled, built in oven, hob and space for washing machine and fridge freezer.

BEDROOM ONE

Double bedroom with carpets, built in wardrobe and double glazed window to the rear.

BEDROOM TWO

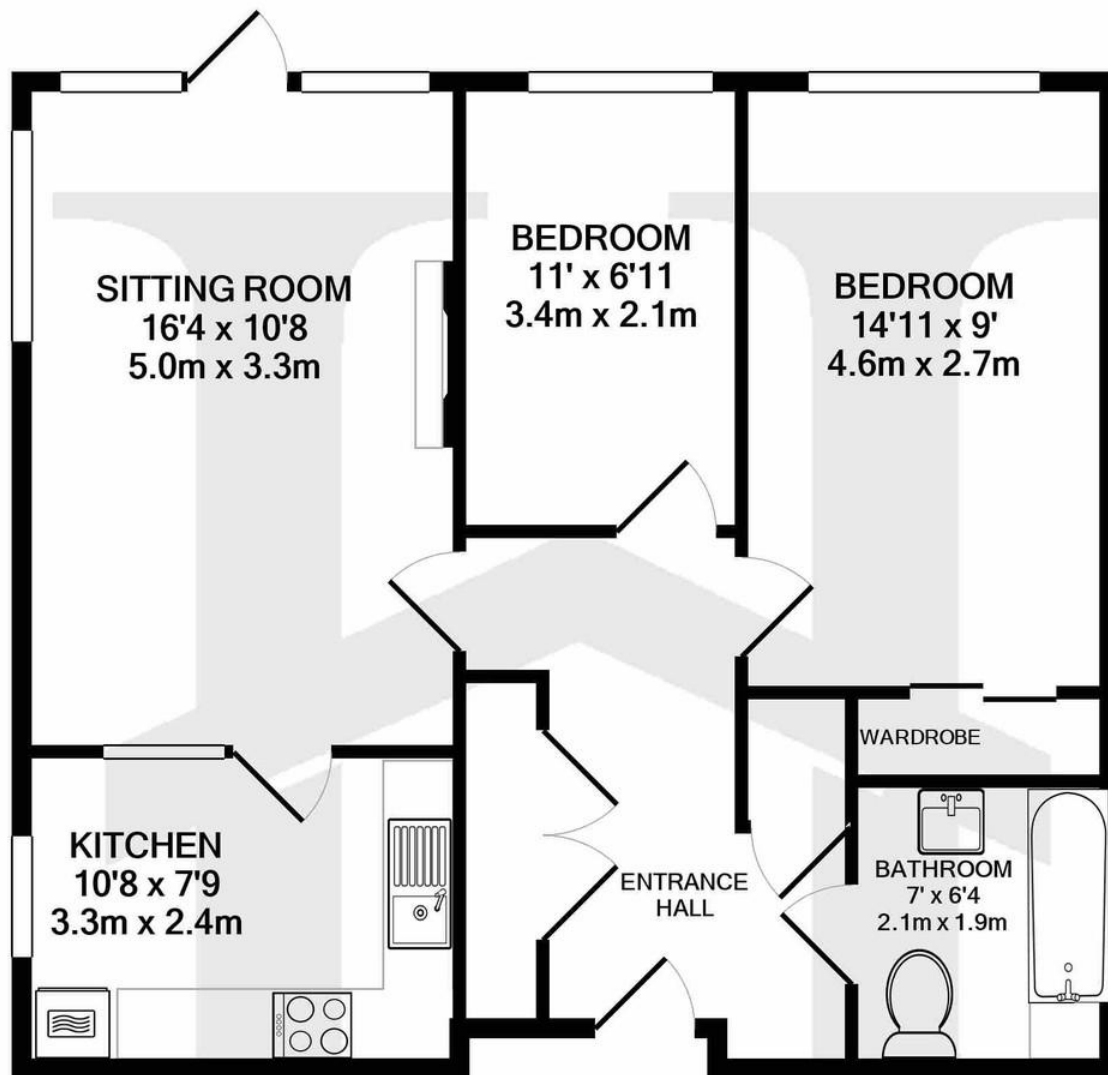
Double bedroom with double glazed window to the rear carpets and wall mounted electric heater

BATHROOM

Fully tiled, wall mounted electric heater, non slip floor, bath with shower above, WC, wash hand basin with fitted mirror and light with shaver point.







%epcGraph_c_1_334%

15 West Street, Cromer, Norfolk,
NR27 9HZ

☎ 01263 511111
✉ cromer@henleysea.co.uk
henleysea.co.uk

Agents Note: Whilst every care has been taken to prepare these sales particulars, they are for guidance purposes only. All measurements are approximate and for general guidance purposes only and whilst every care has been taken to ensure their accuracy, they should not be relied upon and potential buyers are advised to recheck the measurements.