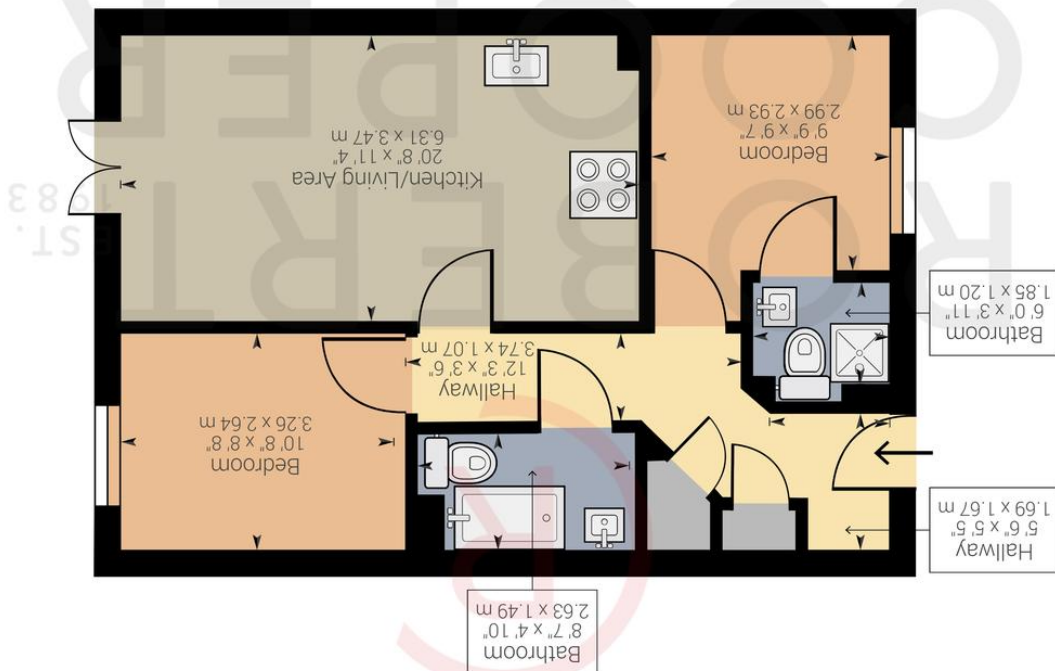


Powered by Giraffe360

Approximate net internal area: 602.46 ft² / 55.97 m²
While every attempt has been made to ensure accuracy, all measurements are approximate.
not to scale. This floor plan is for illustrative purpose only and should be used as such by any prospective tenant or purchaser.



COLERIDGE DRIVE, HA4 8GT
OFFERS IN EXCESS OF £375,000





Presented in immaculate condition throughout is this two bedroom two bathroom ground floor maisonette set in this popular development with easy access to Eastcote & Ruislip Manor high street's. Features include private front entrance, long lease, two double bedrooms, modern interiors, ensuite to master bedroom, open plan kitchen living area and allocated parking. The property is 0.6 miles away from Eastcote high street and train station (Metropolitan & Piccadilly Line), 1 mile away from Ruislip Manor high street and train station (Metropolitan & Piccadilly Line) and 0.4 miles away from Coteford Primary School.

TENURE

Leasehold - 125 years beginning 1st Jan 2009

Ground rent: £340 Per Annum

Service Charge: £111.03 per month

