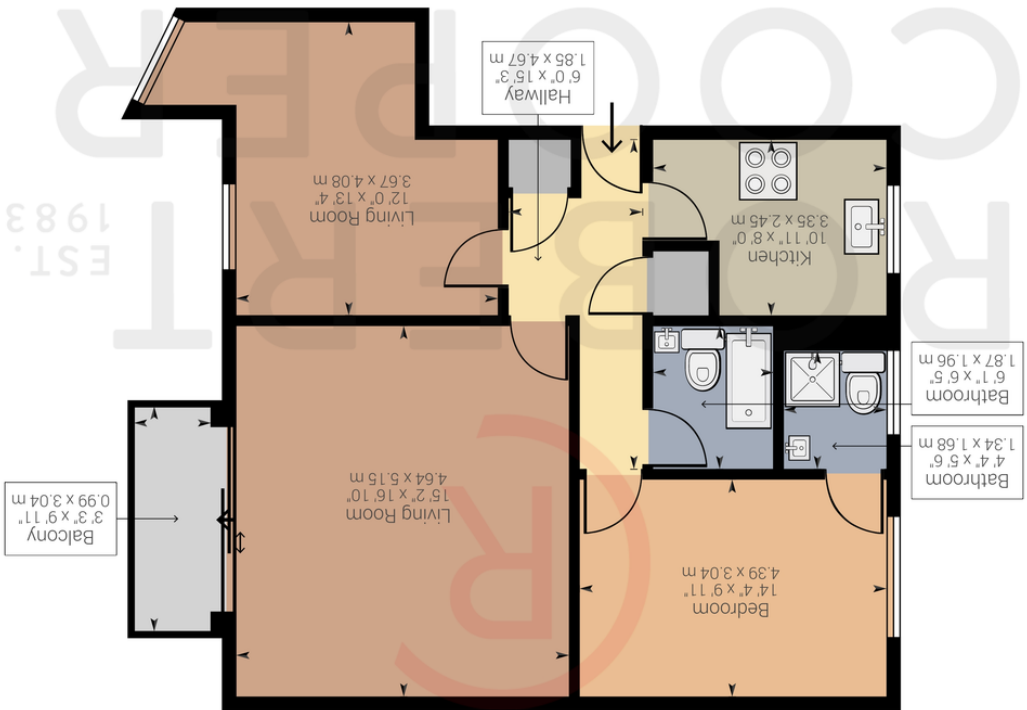


Powered by Giraffe360

Approximate net internal area: 800.83 ft² (834.1 ft²) / 74.4 m² (77.49 m²)
While every attempt has been made to ensure accuracy, all measurements are approximate.
not to scale. This floor plan is for illustrative purpose only and should be used as such by any
prospective tenant or purchaser.



WINSLOW CLOSE , HA5 2QY
£465,000





A charming and highly coveted TWO bedroom TWO bathroom first floor apartment boasting over 800 sq ft of living accommodation & set in this prestigious gated development with its vast array of extensive communal grounds. Features include allocated parking space, share of freehold, separate kitchen and living area, no upper chain, double glazing and private balcony. The property is 0.5 miles away from Eastcote high street & train station (Metropolitan & Piccadilly Line).

TENURE
 Share Of Freehold
 Service Charge - TBC
 Ground Rent - TBC

