



**Rosebery Road, Brixton, SW2**

4 bedroom house for sale

**£975,000**

Freehold

## Property Details

As you enter the property you are greeted by a dual-aspect reception room with high ceilings, two feature fireplaces, and plenty of true Victorian charm thanks to the preserved embellished ceilings and beautiful bay window that floods the front room with natural light. The eat-in kitchen is a real talking point in this property, having been fully extended to make use of all available space, with large skylights running down one side of the room, creating a bright and airy atmosphere. The kitchen has been finished to a very high standard. The glass doors seamlessly flow into the generous garden. On the first floor, you are met by three genuine double bedrooms, one of which spans the entire width of the property and overlooks the sleepy and residential Victorian street. There is a spectacular family bathroom located on this floor. The alternative master bedroom resides on the top floor and is a fantastic size, complete with a modern en-suite bathroom, Velux window and Juliette balcony.

## Features

- Four double bedrooms
- Victorian terraced house
- Two bathrooms
- Nearly 1700 square feet of internal space
- Cellar
- Walking distance to amenities in both Brixton and Clapham
- Freehold

Council tax band E    EPC rating D (58)





Rosebery Road, Brixton, SW2

**K**

Rosebery Road

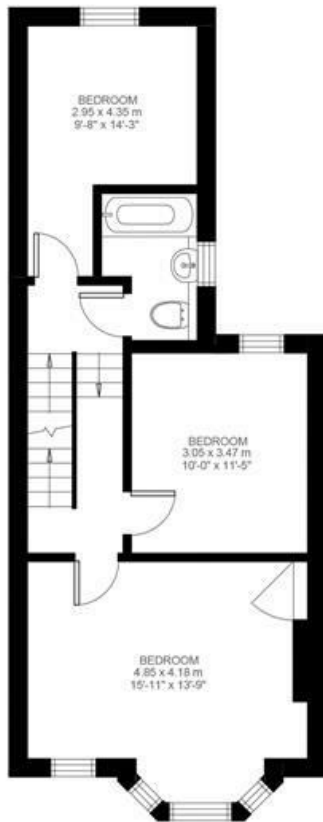
4 Bedroom house

Approx internal area:

**1695 sqft 157 sqm**

(EXCLUDING EAVES STORAGE)  
EAVES STORAGE 4.09 SQ.M / 44 SQ.FT  
INCLUSIVE TOTAL AREA 161.09 SQ.M / 1734 SQ.FT

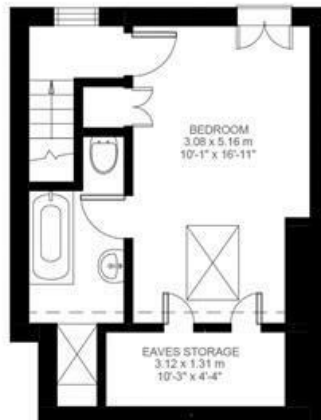
While we do try our very best, floor plans are produced as a guide only and we take no responsibility for the precise accuracy with which any property is represented



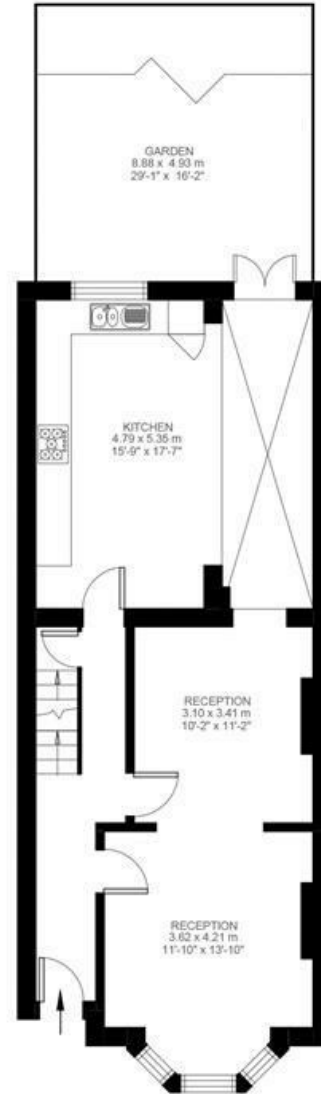
First Floor



Basement



Second Floor



Ground Floor



Rosebery Road, Brixton, SW2

