

## 105 Cartington Terrace

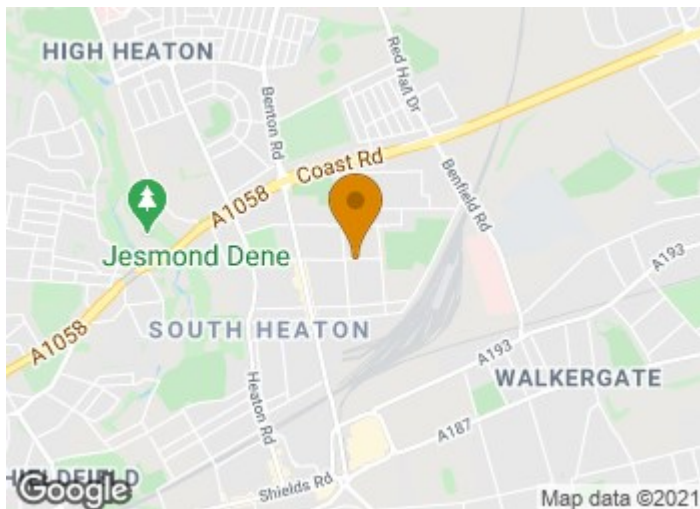
Heaton Newcastle Upon Tyne, NE6 5SJ

Available with no onward chain this well presented upper 3 bed Tyneside flat available on Cartington terrace. Internally the property comprises entrance hall, lounge, kitchen, bathroom and 3 bedrooms. Externally there is a private yard to the rear. Additional benefits include gas central heating and double glazing.

**£135,000**

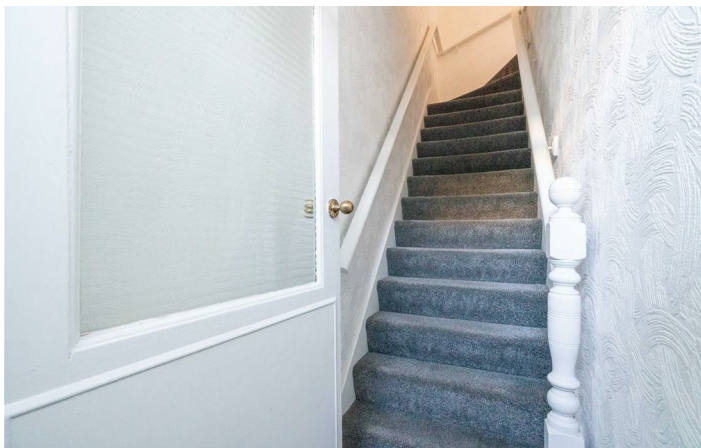
# 105 Cartington Terrace

Heaton Newcastle Upon Tyne, NE6 5SJ

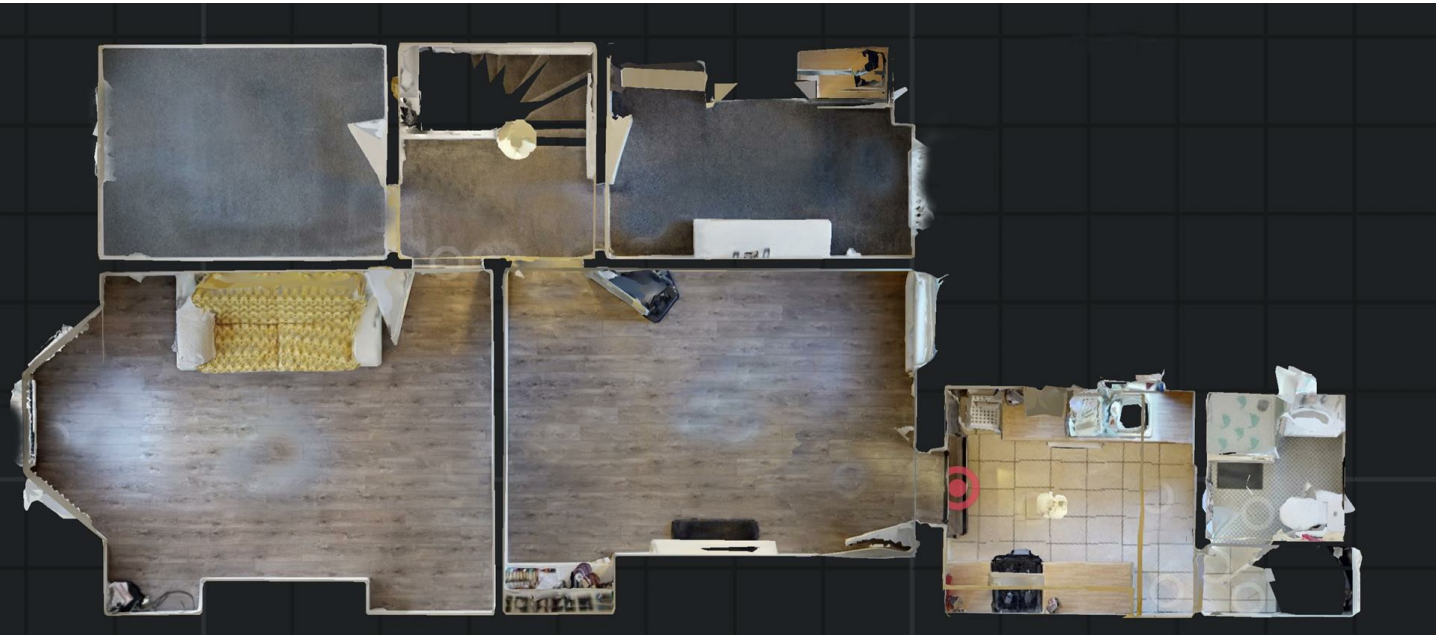


- \*\*360 Virtual Tour\*\*
- £135,000
- Three Bedroom Upper
- Gas Combi Boiler
- On Street Parking
- Private Rear Yard
- Double Glazed
- Near to Iris Brickfield park
- No upper Chain
- Call today for viewings





Floor Plan



These particulars, whilst believed to be accurate are set out as a general outline only for guidance and do not constitute any part of an offer or contract. Intending purchasers should not rely on them as statements of representation of fact, but must satisfy themselves by inspection or otherwise as to their accuracy. No person in this firms employment has the authority to make or give any representation or warranty in respect of the property.

Energy Efficiency Rating		Current	Potential
Very energy efficient - lower running costs			
(92 plus) <b>A</b>			
(81-91) <b>B</b>			
(69-80) <b>C</b>			
(55-68) <b>D</b>			
(39-54) <b>E</b>			
(21-38) <b>F</b>			
(1-20) <b>G</b>			
Not energy efficient - higher running costs			
England & Wales		EU Directive 2002/91/EC	

Environmental Impact (CO <sub>2</sub> ) Rating		Current	Potential
Very environmentally friendly - lower CO <sub>2</sub> emissions			
(92 plus) <b>A</b>			
(81-91) <b>B</b>			
(69-80) <b>C</b>			
(55-68) <b>D</b>			
(39-54) <b>E</b>			
(21-38) <b>F</b>			
(1-20) <b>G</b>			
Not environmentally friendly - higher CO <sub>2</sub> emissions			
England & Wales		EU Directive 2002/91/EC	