

Ascend

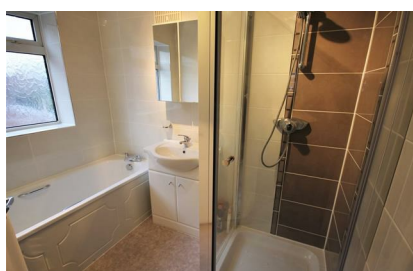
Built on higher standards



12 Snowden Road Manchester M30 9AT

- 3 bedroom semi-detached
- Recently decorated
- Off road parking
- Available Now
- Close by to Train and Metrolink
- Well presented throughout
- Spacious garden
- Unfurnished
- Walking distance to Salford Royal Hospital
- No pets, no smokers

£900 PCM



Situated on the quiet residential Snowdon Road in Ellesmere Park sits this lovely 3 bedroom semi-detached home, located just a short distance from both Monton Village and Eccles town centre, and is within walking distance to Salford Royal Hospital.

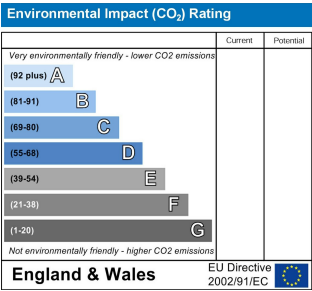
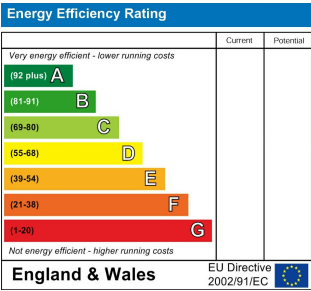
Available immediately on an unfurnished basis, the property comprises; front porch, entrance hall, good-size living room and kitchen/diner to the ground floor, with 3 bedrooms, each with fitted furniture, a 3 piece bathroom with bath, basin and walk in shower, and separate WC to the first floor.

Externally there is a low maintenance front garden, large driveway and mature garden to the rear of the property. This property also comes with it's very own gardener who tends every fortnight allowing you to sit back and enjoy the outside space on offer.

The location is simply ideal; Eccles Train Station and Metrolink are within walking distance, and the motorway network is less than 2 minutes drive away for those travelling further afield, making an easy commute to Manchester City Centre, MediaCityUK and Intu Trafford Centre.

Unfortunately this landlord cannot accept any pets, or smokers.

Call our Monton office for more information. Available immediately.



Ascend

Built on higher standards

0161 707 7584

192 Monton Road, Monton, Manchester, M30 9PY

monton.sales@ascendproperties.com,
monton.lettings@ascendproperties.com
www.ascendproperties.com



These particulars, whilst believed to be accurate are set out as a general outline only for guidance and do not constitute any part of an offer or contract. Intending purchasers should not rely on them as statements of representation of fact, but must satisfy themselves by inspection or otherwise as to their accuracy. No person in this firm's employment has the authority to make or give any representation or warranty in respect of the property

