



Plot A Taylors Park, Tenby

This property offers a fantastic opportunity to purchase a brand new, high spec and architecturally designed bungalow. Situated in the heart of the village of New Hedges which is equidistant from the popular and picturesque seaside resorts of Saundersfoot and Tenby.

The stylish bungalow will consist of a large open plan Lounge/Kitchen/Diner with a decked area off the lounge, Family Bathroom, Three Bedrooms with the Master Bedroom benefiting from an En-suite.

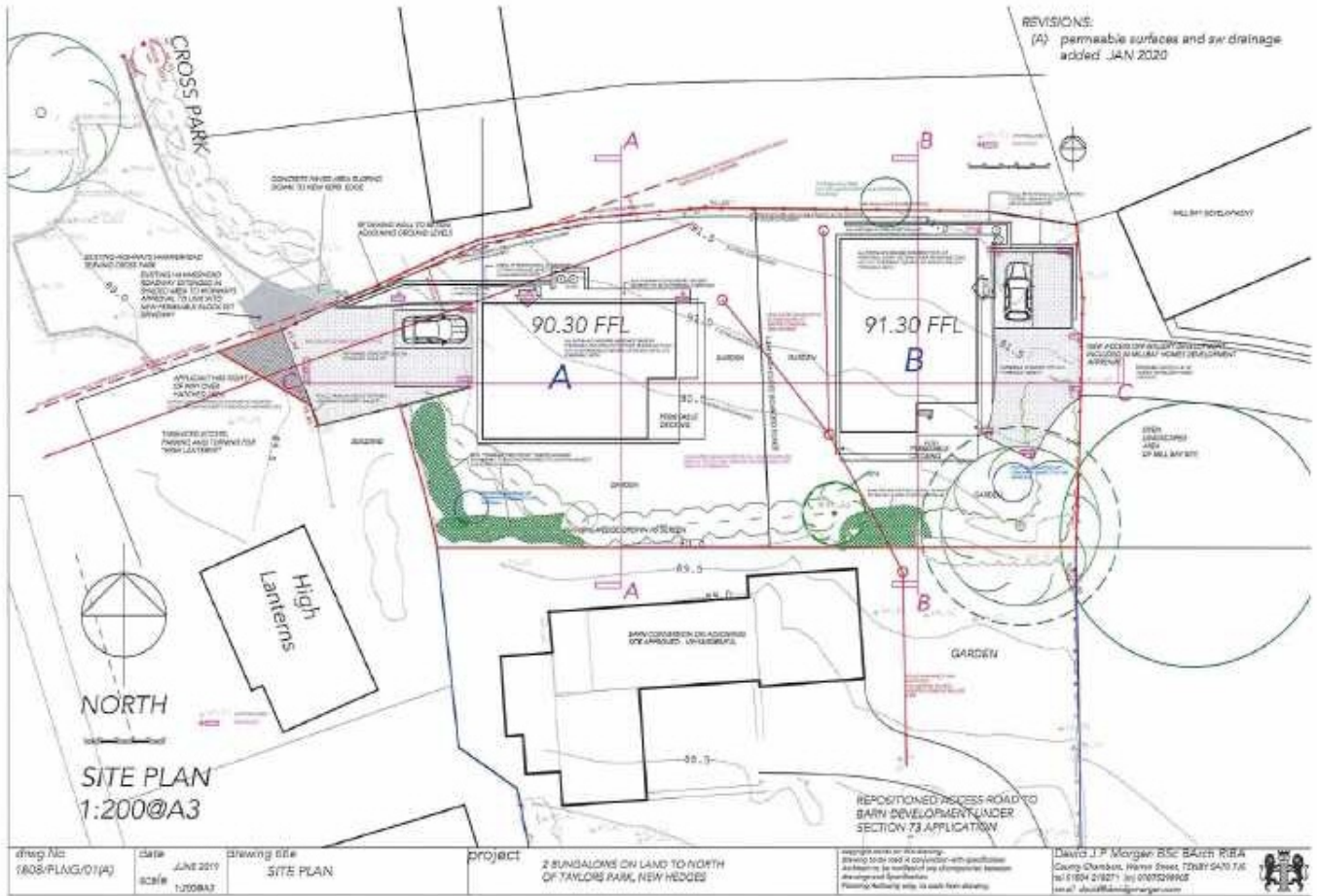
The perspective purchaser will be able to work with the developer to provide input on internal colour scheme of the floor coverings, kitchen and bathrooms.

£350,000

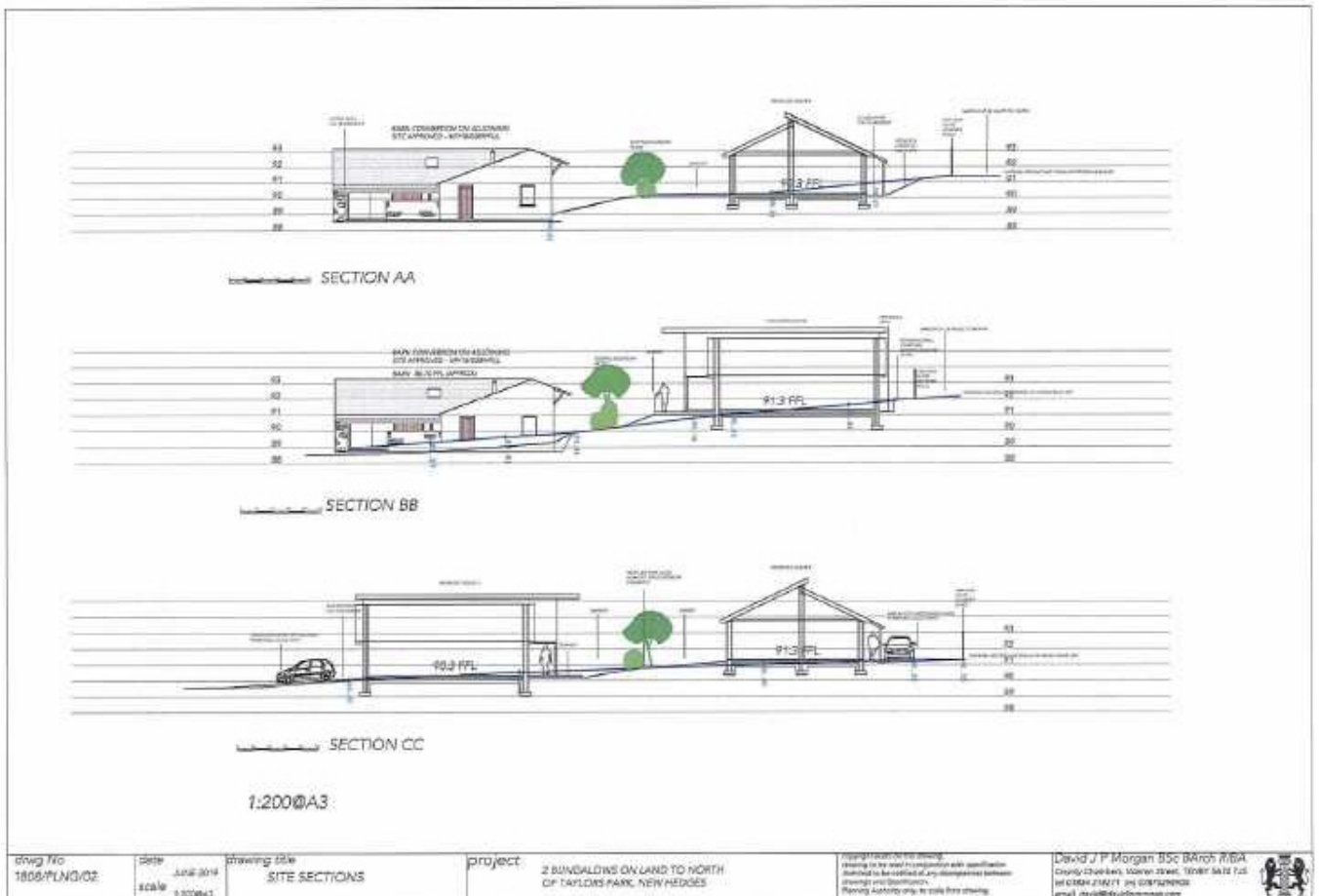
Tenure Freehold



Side Section



Elevation



DIRECTIONS

From our office head out to the village of New Hedges. Pass the mini-market on the left hand side, continue up the hill and just before the right hand bend turn right into Cross Park. Post code for the Sat. Nav. - SA70 8TR

LOUNGE/KITCHEN/DINER

25'9 X 13'4 (7.85M X 4.06M)

BATHROOM

6'9 X 6'2 (2.06M X 1.88M)

MASTER BEDROOM

11'9 X 11'5 (3.58M X 3.48M)

EN-SUITE

6'9 X 6'2 (2.06M X 1.88M)

BEDROOM TWO

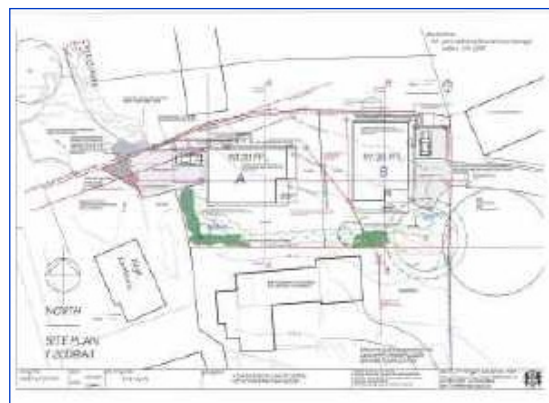
11'9 X 10'0 (3.58M X 3.05M)

BEDROOM THREE/STUDY

11'9 X 9'5 (3.58M X 2.87M)

SITE PLAN

SIDE SECTION



ELEVATION



NOTE

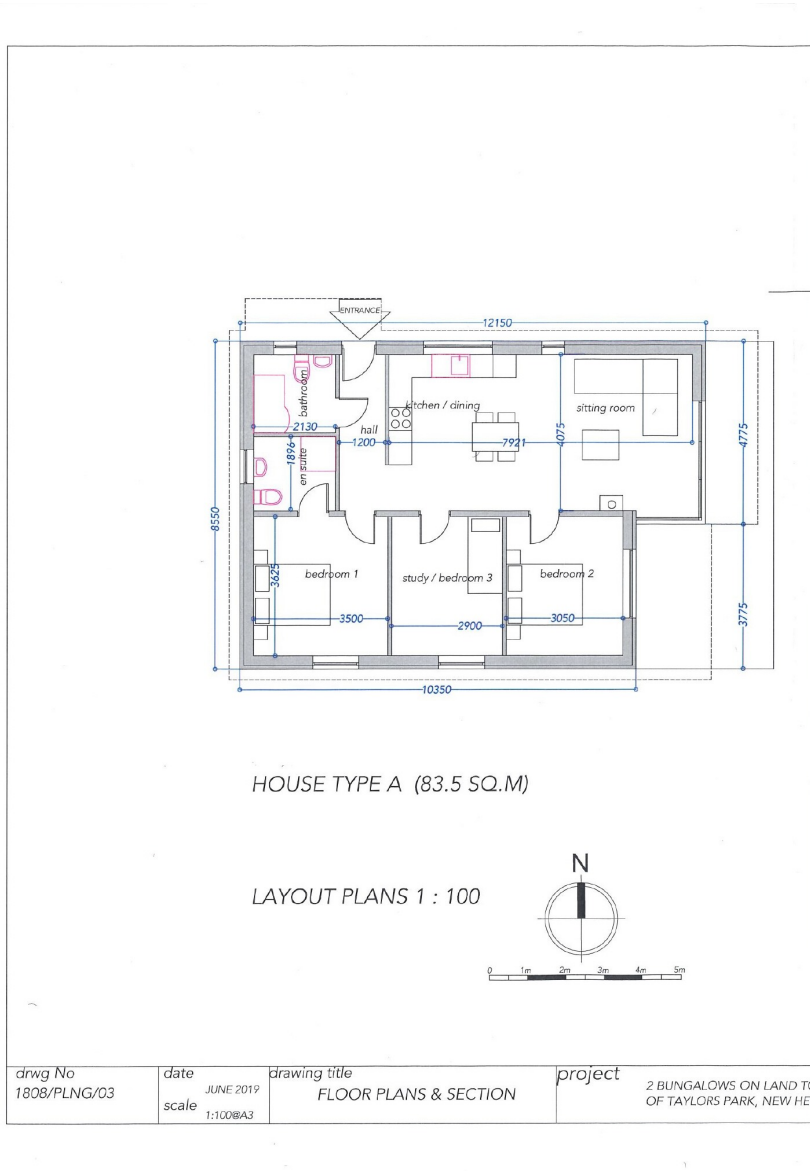
All room dimensions are approximate and all images are the artists impression

COUNCIL TAX BAND

The Council Tax Band for this property is - Band

FLOOR PLAN

Not To Scale - For Illustration Purpose only



You may download, store and use the material for your own personal use and research. You may not republish, retransmit, redistribute or otherwise make the material available to any party or make the same available on any website, online service or bulletin board of your own or of any other party or make the same available in hard copy or in any other media without the website owner's express prior written consent. The website owner's copyright must remain on all reproductions of material taken from this website.

