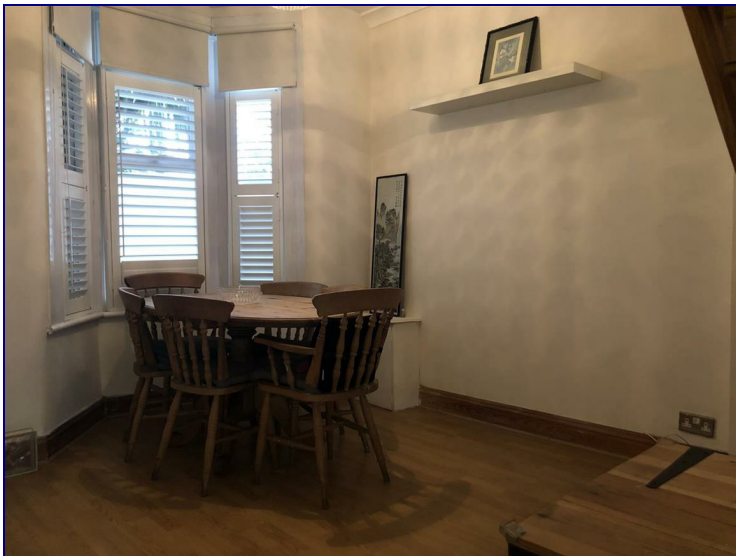


Scotland Green Road, Enfield, EN3 4RB



£1,400 PCM

Two Bedroom House, AVAILABLE NOW.

Occupants will benefit from large open plan dining and lounge, fitted kitchen, two double bedrooms, three piece bathroom suit and easily maintainable garden. On street parking.

Offered Furnished / Unfurnished.

Located within a short distance to Ponders End and Southbury Rail Stations.



Energy Efficiency Rating		
	Current	Potential
<i>Very energy efficient - lower running costs</i>		
(92 plus) A		
(81-91) B		
(69-80) C		
(55-68) D		
(39-54) E		
(21-38) F		
(1-20) G		
<i>Not energy efficient - higher running costs</i>		
England & Wales	EU Directive 2002/91/EC	

Environmental Impact (CO ₂) Rating		
	Current	Potential
<i>Very environmentally friendly - lower CO2 emissions</i>		
(92 plus) A		
(81-91) B		
(69-80) C		
(55-68) D		
(39-54) E		
(21-38) F		
(1-20) G		
<i>Not environmentally friendly - higher CO2 emissions</i>		
England & Wales	EU Directive 2002/91/EC	

