



1,088
sq ft



3



1



2

REDBRIK
ESTATE AGENTS 

Helping you find
your home at...

Causeway Glade, Dore
Guide Price £400,000 to £425,000

£400,000 to £425,000 (Guide Price) A beautifully presented and well maintained three bedroom detached house, occupying a quiet cul-de-sac position in the sought-after village of Dore.

- Three Bedroom Detached House
- Lounge With Feature Fireplace
- Generous Dining Room/Family Room
- Fitted Breakfast Kitchen With Appliances
- Two Double Bedrooms (With Fitted Wardrobes), One Single Bedroom
- New Fitted Bathroom With Three Piece Suite
- South-Facing Landscaped Garden With Lawn & Patio
- Detached Single Garage, Car Port, Off Road Parking For Three Vehicles
- uPVC DG & Gas Central Heating
- Energy Rating - D, Tenure: Freehold.





This is for my family...

- Living & dining space is flooded with natural light.
- Bedrooms are all well-proportioned with plenty of storage.
- The beautiful south-facing garden is enclosed providing a safe space for children to play and room to entertain.
- There are a number of highly regarded schools nearby for all ages.

Buying just for me, or with my partner...

- The property has been really well maintained and is ready to move straight into.
- There's plenty of space for when guests stay over.
- It's neutrally decorated so you can add your own style.

This could be an ideal property to downsize...

- The location is perfect for nearby shops/amenities, only a short walk into Dore village.
- Transport links including key bus routes are at the end of the road.
- You're on the edge of the Peak District and the local train station links you with numerous major cities.

I am looking for an investment...

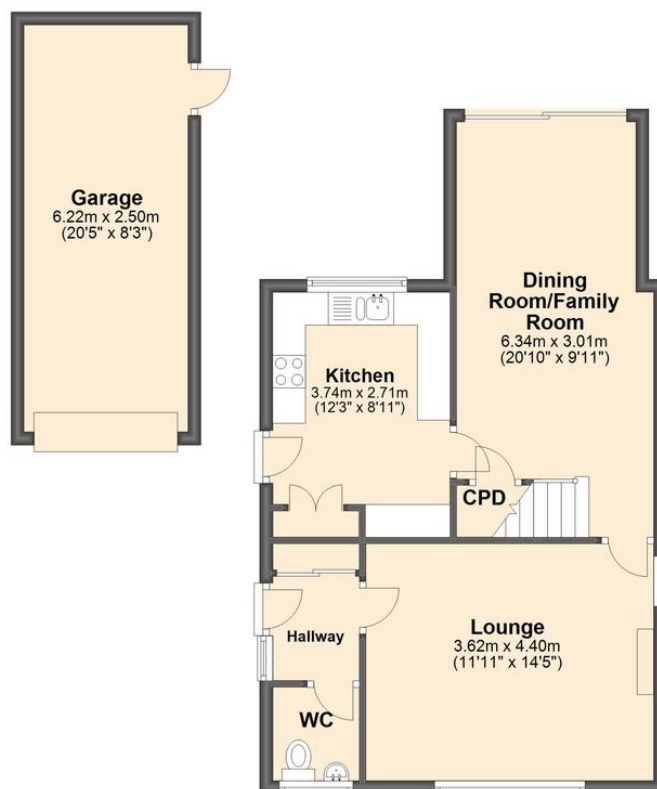
- We think the property could rent for £1,400 PCM, a yield of 4.2%.
- Tenants would love the location, garden & off road parking.





Ground Floor

Approx. 50.6 sq. metres (544.3 sq. feet)



First Floor

Approx. 50.6 sq. metres (544.3 sq. feet)



Total area: approx. 101.1 sq. metres (1088.6 sq. feet)

We endeavour to make these particulars as accurate as possible, but they should only be used as guidance and they do not constitute any part of the contract. All measurements are approximate and no guarantees are made to the services, heating systems, appliances (if any) or fittings as to their working order and no warranty can be given or implied.

You may download, store and use this material for your own personal use and research. You may not republish, retransmit, redistribute or otherwise make the material available to any party or make the same available on any website, on or offline service or hard copy without the website owner's express written consent. The website owner's copy right must remain on all reproductions of material taken from this website.