



Shaftesbury Avenue, Chinatown
£1,050 pw

> 3 Bedrooms > 2 Bathroom > Unfurnished

TAVISTOCKBOW
RESIDENTIAL





- > Three double bedrooms
- > Two bathrooms (one ensuite)
- > Kitchen dining room
- > Separate reception room
- > Plenty of storage space
- > Unfurnished
- > Available from mid September
- > 4th floor with lift
- > Located above the famous Yi Fang Taiwan fruit tea shop
- > Close to Leicester Square and Piccadilly Circus tube stations



A fantastic, recently redecorated three bedroom, two bathroom apartment located on the Chinatown / Soho borders. The property offers a large kitchen dining area with separate reception room. It has high ceilings throughout and large windows

providing plenty of natural light. The three double bedrooms have built in wardrobes and there are two modern bathrooms. The property is available mid September on an unfurnished basis.

Not suitable for more than 2

sharers, unless they are immediate family.





WHAT WE LOVE:

- High specification
- Modern finishes
- Ideal of sharers
- Located above Shi Bu Ya Japanese café
- Moments from the delights of Soho.

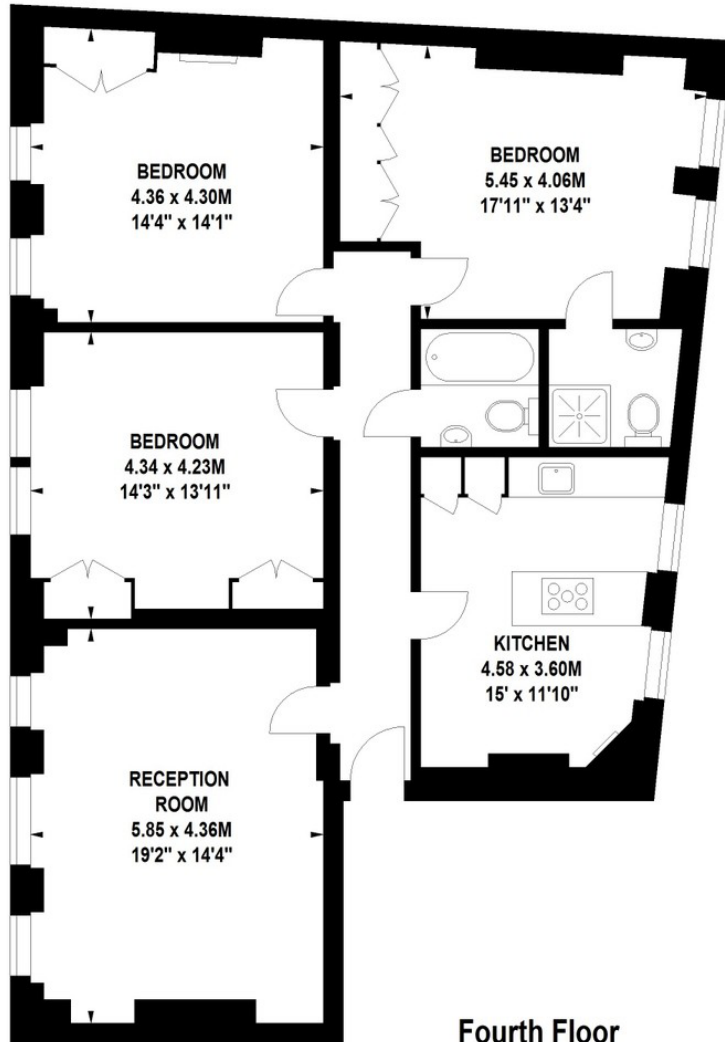
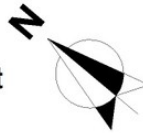
WHAT YOU NEED TO KNOW:

- 4th floor
- Passenger lift
- One bathroom, one shower room
- Secondary glazing
- Next door to Meet Fresh tea & dessert café.

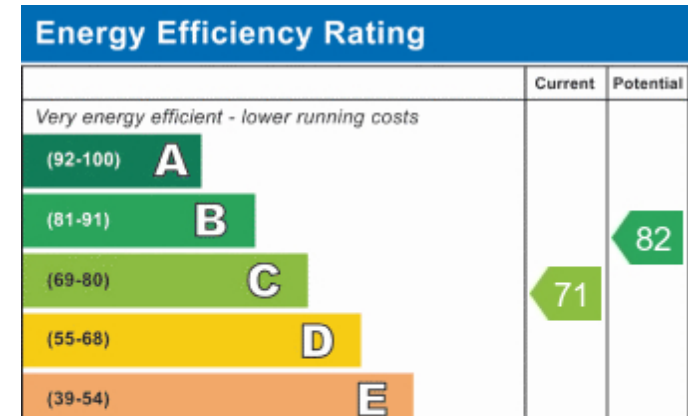


Exeter Mansions, W1

Approximate Gross Internal Area 117 sq m / 1259 sq ft



Floor Plan produced for Tavistock Bow by Mays Floorplans © . Tel 020 3397 4594
 Illustration for identification purposes only, not to scale
 All measurements are maximum, and include wardrobes and window bays where applicable






About Us

Tavistock Bow is an independent residential agency based in Covent Garden. We are niche, boutique, creative, knowledgeable, professional and approachable. We love what we do and that's why we do it.

Contact Us

- a.** 31 Long Acre, London, WC2E 9LA
- t.** 020 7477 2177
- e.** hello@tavistockbow.com
- w.** tavistockbow.com

-  /tavistockbow
-  /tavistockbow
-  @tavistockbow



TAVISTOCKBOW
RESIDENTIAL