



**Hayward  
Tod**

**3 bedroom Detached Bungalow** | Little Corby Road | Little Corby | Warwick Bridge | CA4 8QN  
**Guide Price £285,000**





Recently refurbished three bedroom bungalow with detached garage. Modern kitchen. Open plan living dining. Three bedrooms. Contemporary bathroom with bath and large walk in shower. Paved driveway parking.

kitchen | open plan living dining | inner hall | three bedrooms | family bathroom | block paved driveway | detached single garage | wrap around garden | gas central heating | double glazing | EPC D | council tax band D

#### APPROXIMATE MILEAGES

Warwick Bridge 0.2 | M6 motorway 2.7 | Brampton 4.8 | Carlisle 5 | Penrith - North Lakes 21.5 | Newcastle International Airport 51

#### WHY LITTLE CORBY?

Perfectly located equidistant between Carlisle and Brampton and just a short walk from the amenities of Warwick Bridge as well as being convenient for access to the M6 motorway and the A69 for access to Newcastle and the North East. Both Carlisle and Brampton have good golf courses and a regular bus service runs through Warwick Bridge.

#### ACCOMMODATION

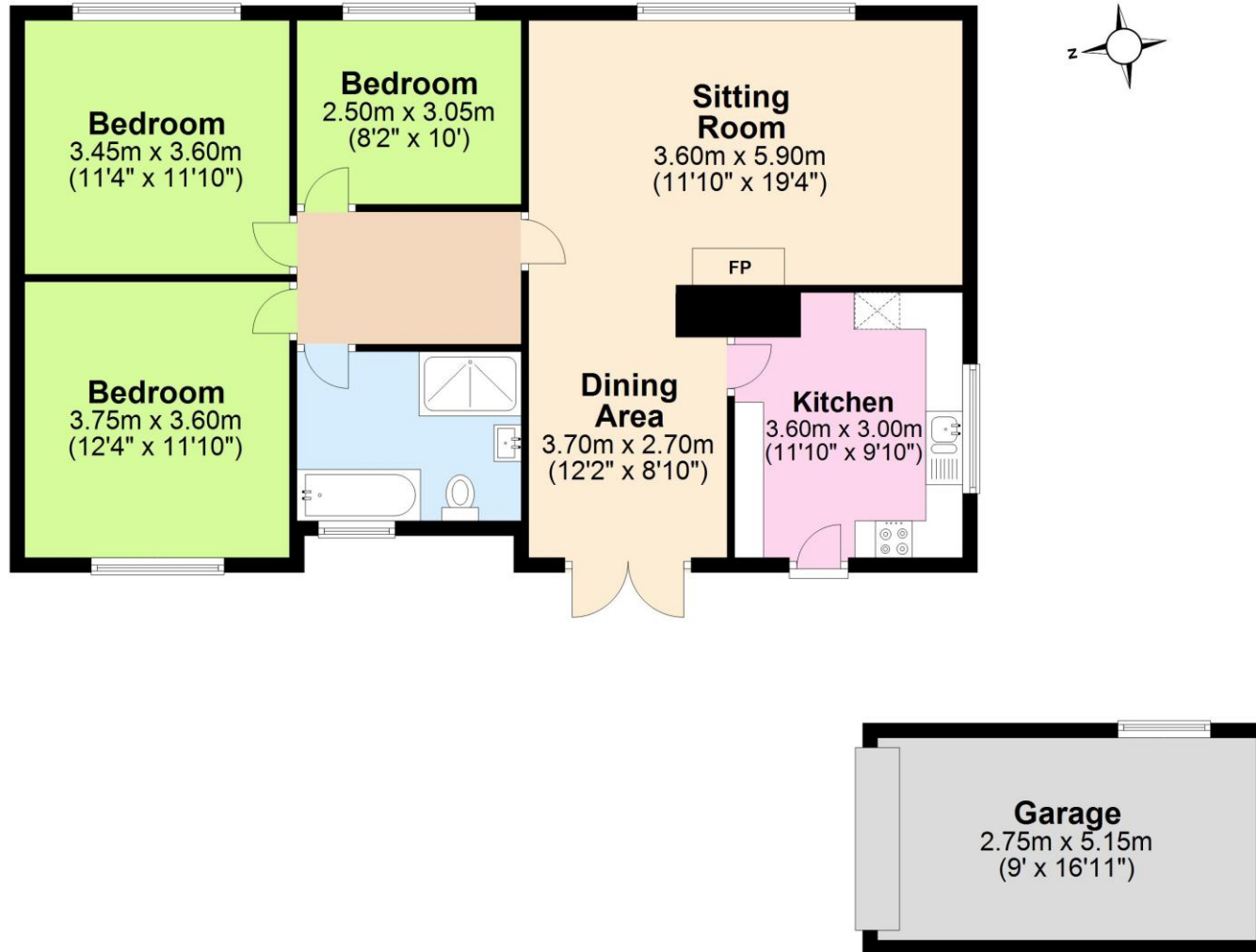
The internal accommodation is offered in superb condition, having been fully refurbished and is spacious and well laid out. The modern kitchen, complete with integrated appliances is complemented by a large open plan living dining space, with double doors to the rear and a gas fire. The large inner hallway provides access to the three good size bedrooms and a generous bathroom, complete with large walk-in shower and bath. Externally there is a block paved and gated driveway and a detached garage providing storage. The gardens, which wrap around the property on all sides, have been seeded to lawn.





# Ground Floor

Approx. 105.5 sq. metres (1135.8 sq. feet)



Total area: approx. 105.5 sq. metres (1135.8 sq. feet)

## Contact

6 Paternoster Row,  
Carlisle Cumbria CA3 8TT

01228 810 300  
info@haywardtod.co.uk  
haywardtod.co.uk

## Agents note

Whilst every care has been taken to prepare these sales particulars, they are for guidance purposes only. All measurements are

approximate and are for general guidance purposes only and whilst every care has been taken to ensure their accuracy, they should not be relied upon and potential buyers are advised to recheck the measurements.