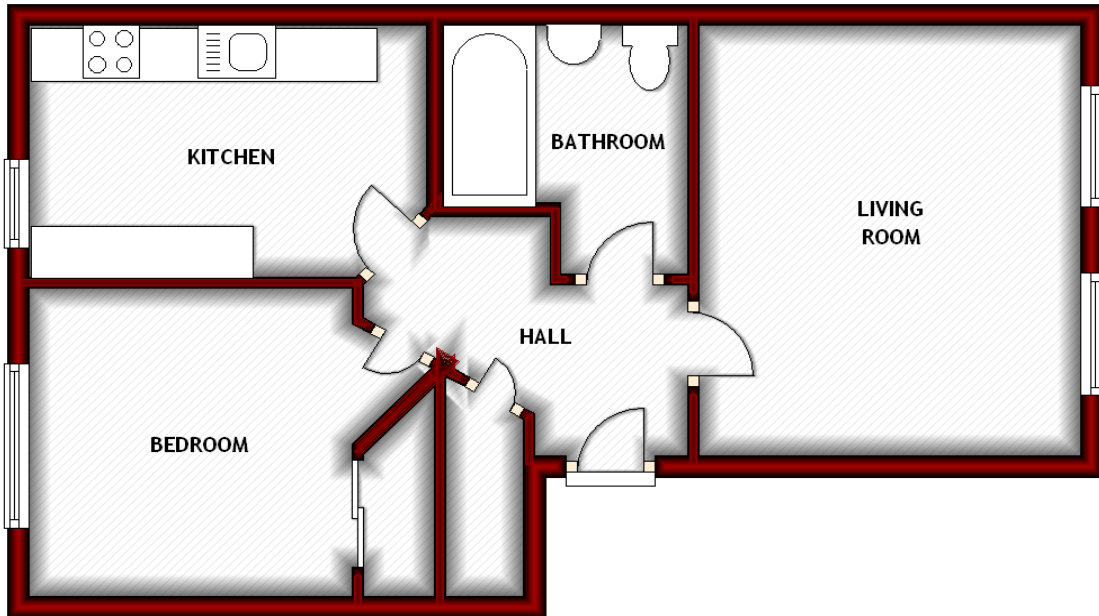


**19 Park Road Court
Aberdeen**

GROUND FLOOR

APPROX. 42.6 SQ. METRES (458.9 SQ. FEET)



TOTAL AREA: APPROX. 42.6 SQ. METRES (458.9 SQ. FEET)

The above particulars are for guidance only, no liability for any errors or omissions will be accepted by Aberdeen Property Leasing Ltd.