



Maitland Court, Gloucester Terrace, London. W2  
*£2,000,000 Subject to Contract*

› 3 Bedrooms › 2 Bathroom

**TAVISTOCKBOW**  
RESIDENTIAL





### What we love

- › Penthouse
- › large terrace
- › 3 beds
- › 2 baths
- › lateral space
- › Double aspect
- › Secure parking space
- › Share of freehold
- › Concierge
- › Close to Hyde Park



This spacious 3 bed penthouse is found in Maitland Court, a sought after mansion block moments away from the fabulous Italian Gardens in Hyde Park.

A large reception space has floor to ceiling glass doors which slide open to a fantastic south/

west facing terrace with far reaching views of the surrounding area and Hyde Park. There is a separate kitchen with a convenient breakfast bar and fitted appliances. The sleeping accommodation comprises of a large principle bedroom with ensuite bathroom. There is a well-

equipped shower room which services two further double bedrooms.

The apartment benefits from having a designated secure parking space and there is a 24 hour concierge. The apartment also has a share of the freehold.





Transport links abound with Lancaster Gate (Central Line) a short walk away. Paddington Station (Bakerloo, Hammersmith & City, Circle, District Lines and Heathrow Express) is also in close proximity.

#### **WHAT WE LOVE**

3 bed 2 bath penthouse  
Large south/west facing terrace  
Double aspect  
Lateral space  
Close to Hyde Park.

#### **WHAT YOU NEED TO KNOW**

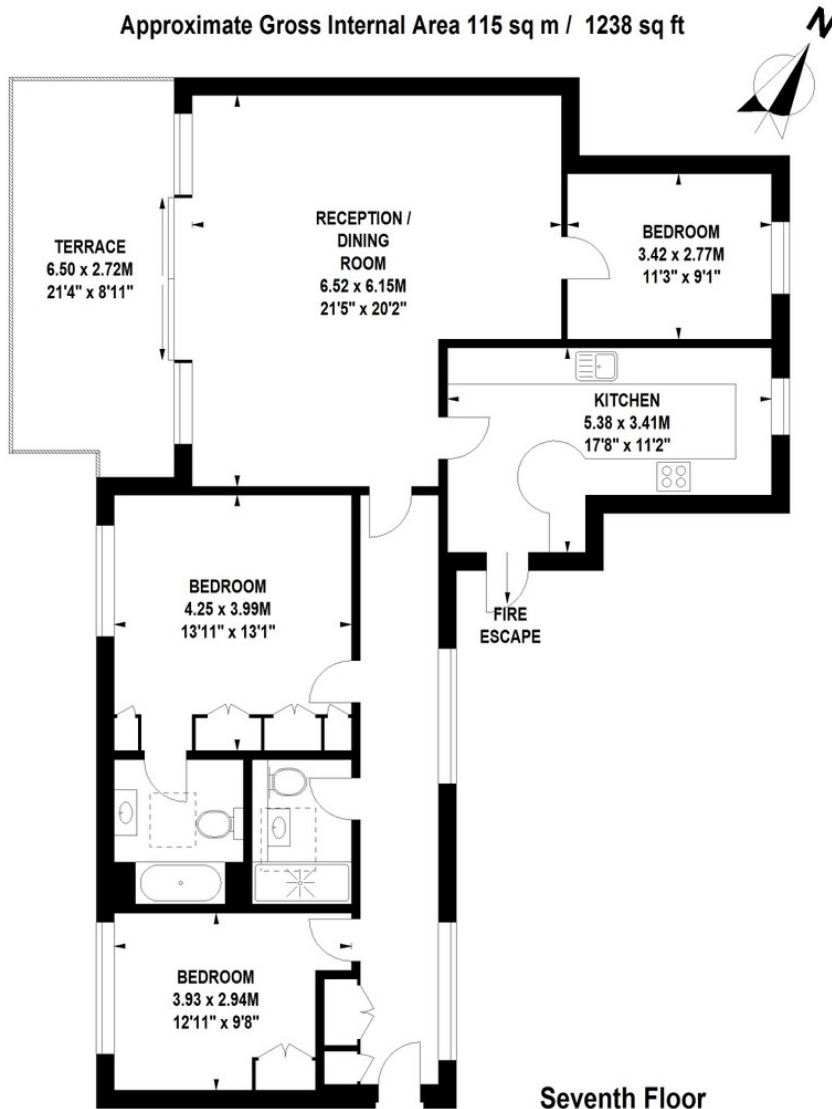
Concierge  
Secure parking  
Share of Freehold  
1238 Square feet (approx)  
Close to transport links.



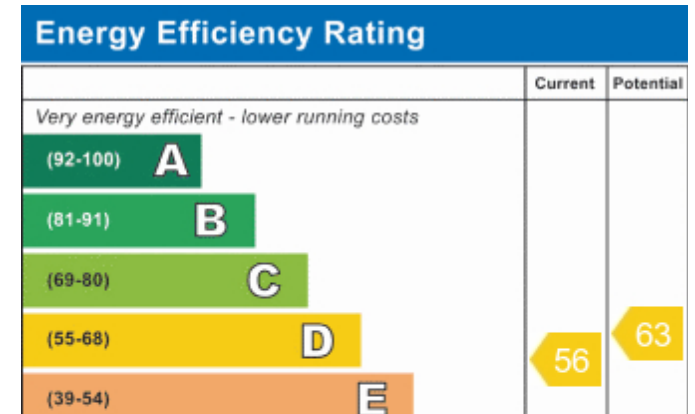


### Maitland Court, W2

Approximate Gross Internal Area 115 sq m / 1238 sq ft



Floor Plan produced for Tavistock Bow by Mays Floorplans © . Tel 020 3397 4594  
 Illustration for identification purposes only, not to scale  
 All measurements are maximum, and include wardrobes and window bays where applicable



### About Us

Tavistock Bow is an independent residential agency based in Covent Garden. We are niche, boutique, creative, knowledgeable, professional and approachable. We love what we do and that's why we do it.

### Contact Us

- a.** 31 Long Acre, London, WC2E 9LA
- t.** 020 7477 2177
- e.** hello@tavistockbow.com
- w.** tavistockbow.com

- /tavistockbow
- /tavistockbow
- @tavistockbow

