



1,134
sq ft



2



1



2

REDBRIK
ESTATE AGENTS



Helping you find
your home at...

Sycamore Road, Hollingwood
Guide Price £165,000 to £170,000

£165,000 to £170,000 (Guide Price) Located on a quiet road in the popular suburb of Hollingwood is this superbly styled two/three bedroom semi-detached house.

- Two/three Bedroom Semi Detached House
- Spacious Lounge With Electric Fire
- Open Plan Kitchen/ Diner
- uPVC Conservatory Overlooking The Rear Garden
- Fitted Bathroom With White Suite
- Enclosed Rear Garden With Lawn, Patio & Raised Decking
- Off-Street Parking
- Down Stairs Shower Room With White Suite
- GCH & uPVC Double Glazing
- Energy Rating - D - Freehold.





This is for our family...

The property offers versatile open plan accommodation with further scope to modernise to your own requirements

The substantial low maintenance enclosed garden is excellent for both kids to play and adults to entertain in,

There is ample off parking & plenty of storage

Schools, shops & parks are all a short walk away

Buying just for me, or with my partner...

The accommodation provides enough space to create a permanent third bedroom or to use it as a dressing room or office to suit

The property is so versatile; you could make the property feel ultra-modern or quite traditional to suit your tastes

Pubs, restaurants & takeaways are all within close proximity & Chesterfield Town Centre a short drive away

Ideally placed for bus services & transport links including access to the commuter routes



This could be an ideal property to downsize...

The location is quiet with far reaching views to the rear but only a short distance from shops, pubs, walks & parks

The property has been set-up to be relatively low-maintenance with the bonus of being able to put your own stamp on it

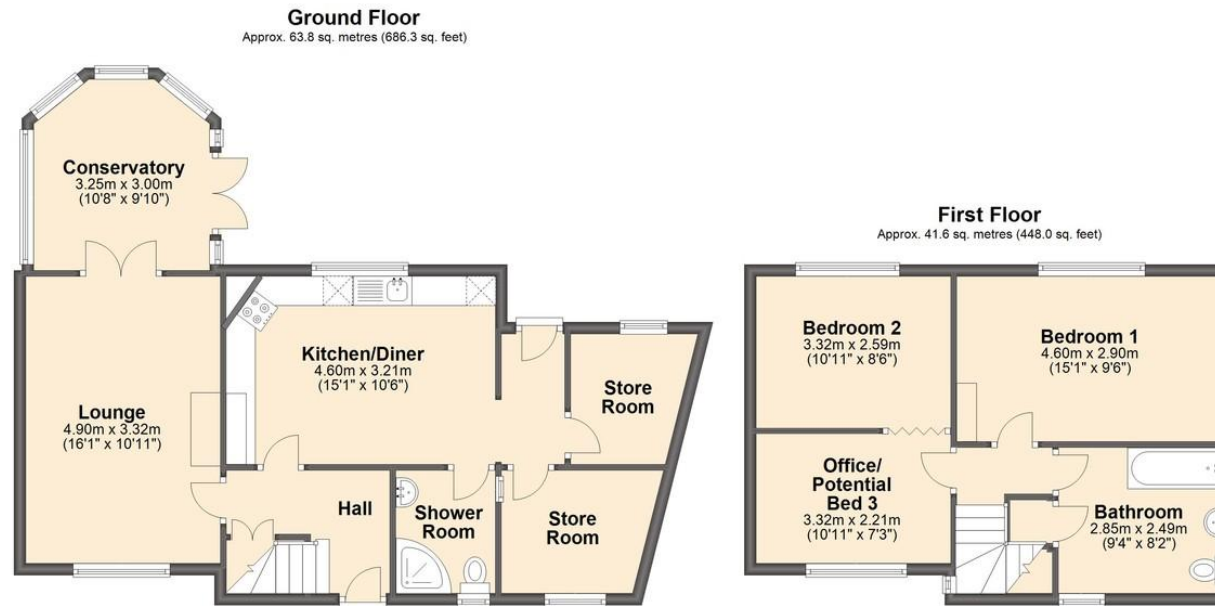
The accommodation is very flexible, offering spaces that can be utilised for a number of purposes

I am looking for investment...

We think the rental yield will be approximately

Tenants would love the location, neutral decoration & low maintenance grounds.





Total area: approx. 105.4 sq. metres (1134.3 sq. feet)

We endeavour to make these particulars as accurate as possible, but they should only be used as guidance and they do not constitute any part of the contract. All measurements are approximate and no guarantees are made to the services, heating systems, appliances (if any) or fittings as to their working order and no warranty can be given or implied.

You may download, store and use this material for your own personal use and research. You may not republish, retransmit, redistribute or otherwise make the material available to any party or make the same available on any website, on or offline service or hard copy without the website owner's express written consent. The website owner's copy right must remain on all reproductions of material taken from this website.